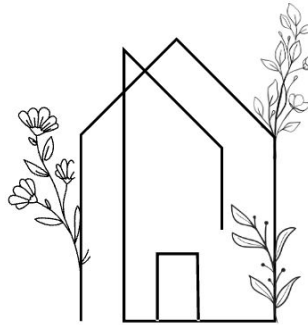




INTRODUCTION / Barnsbury Estate Garden

PHASE 01 / Research and Design Analysis



Project Brief

Barnsbury Estate has a complicated history when it comes to housing. With this intervention, we intend to address this complex history while also providing a community-centered area for the people who live in this space.

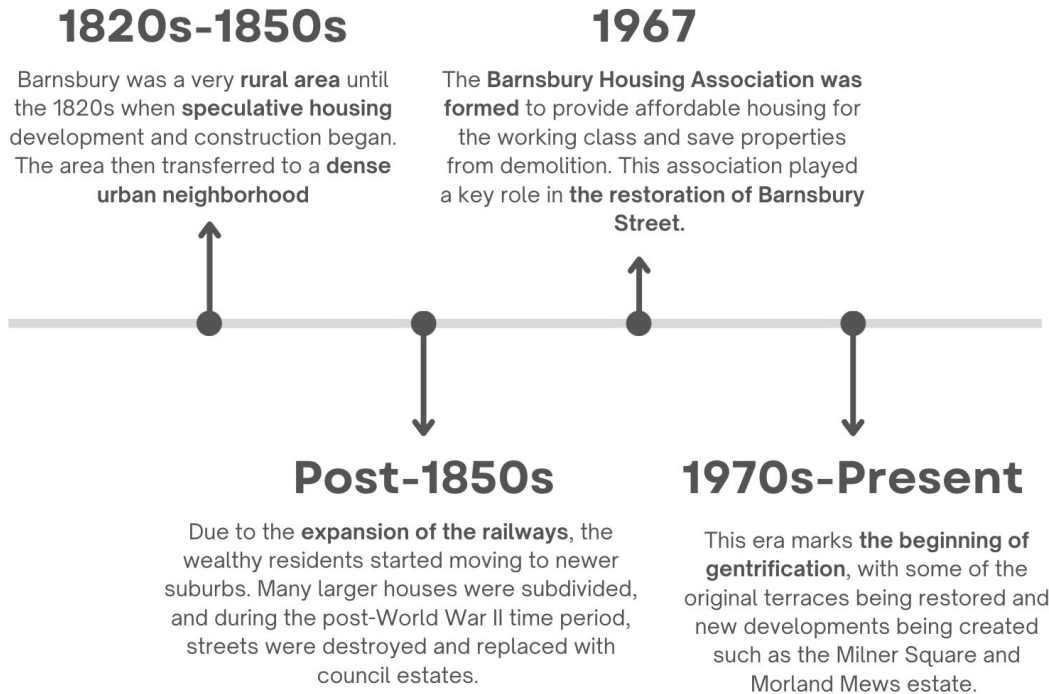
This piece is a scaled down model of one of the apartment complexes in Barnsbury Estate, but from each window grows various plants and greenery, with an emphasis on edible plants.

This space is currently experiencing a slow gentrification, but the city is working to combat this through an increase in affordable housing infrastructure. We hope to create a piece that is a testament to the importance of the community, the people currently living in this space, and the many people that inhabited this space previously.





History Timeline



Barnsbury Estate Redevelopment

Newlon Housing Trust

About us

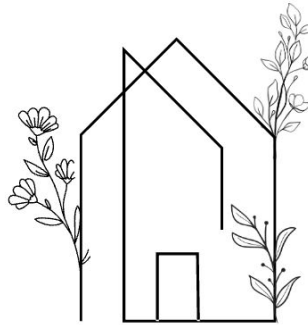
The Newlon Group consists of Newlon Housing Trust, the parent of the Group, and its five subsidiaries – Outward, Newlon Fusion, Access Homes, NewlonBuild and NewlonInvest.

We all work closely together to provide a comprehensive range of high quality community services.

Newlon Housing Trust is a not for profit Community Benefit Society and a charitable housing association. Newlon owns or manages around 8,500 affordable homes, primarily in nine boroughs in north and east London, with many more in development. These homes are made up of a mix of affordable tenures and we provide housing for people nominated from local authority waiting lists, specialised accommodation for Key Workers and Shared Ownership homes to help people take their first step on the property ladder. Working in partnership with Outward we also provide housing for people with a wide range of support and care needs.



PHASE 02 / Ideation



V&A Inspiration

The format of our living sculpture is inspired by Sam Elbahja's piece *The Grid*, which was on display at the V&A East Storehouse.

This piece, accompanied by poetry, focuses on the importance and beauty of social housing and the detrimental effects of gentrification to these communities.

The themes that Elbahja's work conveys are themes that we hope to express through our sculptural garden intervention.



Sam Elbahja
The Grid
On display at V&A East Storehouse

Artist Collaboration: Stazzy

Stazzy is a Street Artist based in Barnsbury Estate who focuses on preserving and creating safe community spaces through his art.

Working with Stazzy on this project would allow for community engagement during both the conceptual and physical creation of this intervention, ensuring the intervention is beneficial to the residents of Barnsbury Estate.

At the heart of No More Red is creating safe, community spaces for young people to enjoy the physical, mental and social benefits that sport brings. Through their long-standing partnership, Arsenal and Islington Council have worked together to refurbish a football pitch at the Harvist Estate, in the shadow of the Emirates Stadium.

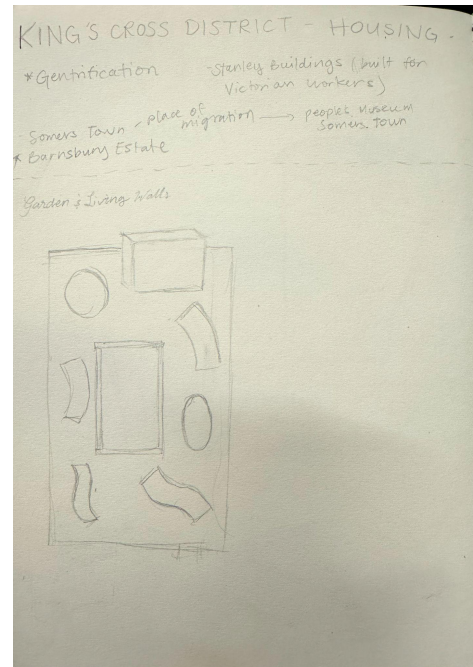
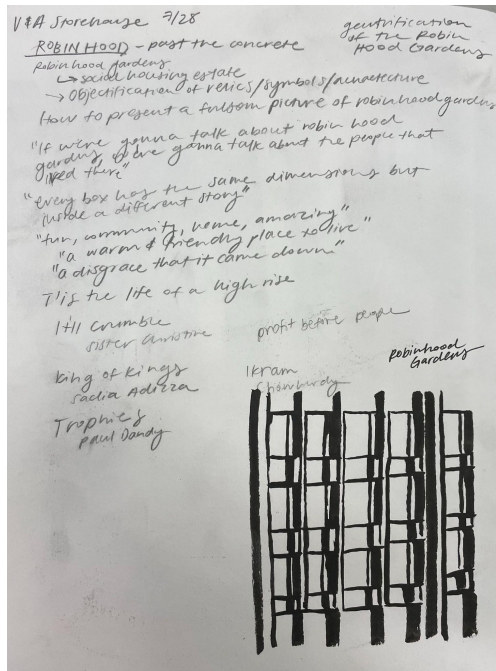


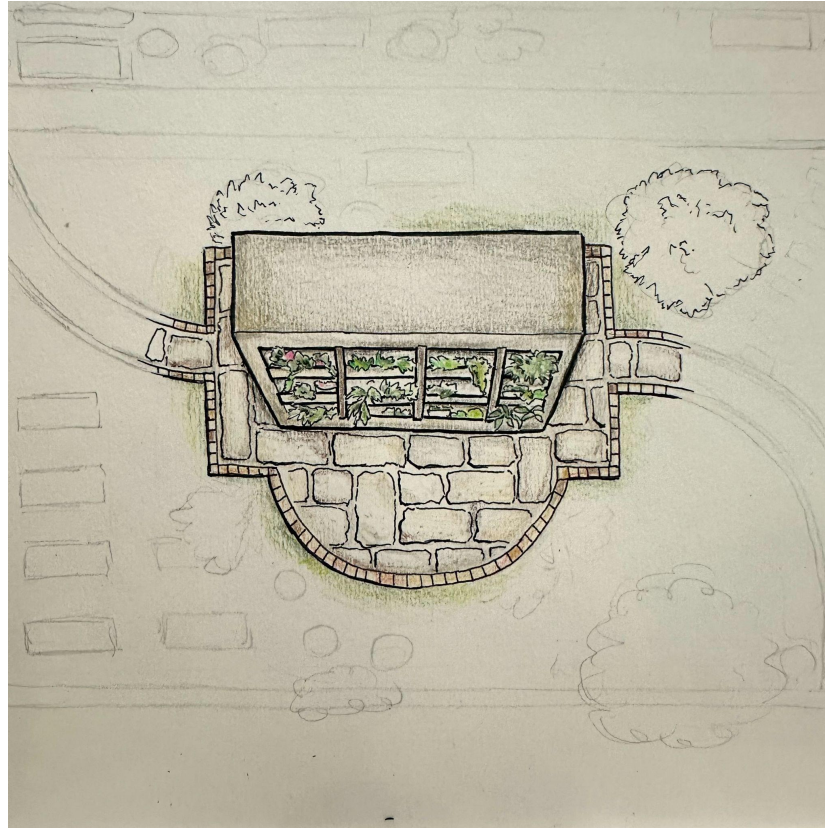
Street artist Stazzy, who worked with young people to paint the No More Red mural

Artist Collaboration: Stazzy

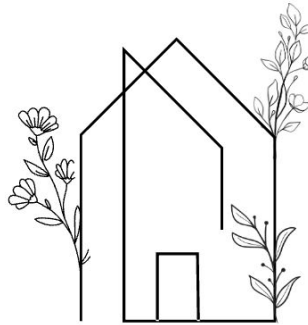


Community Mural Collaboration
with Stazzy



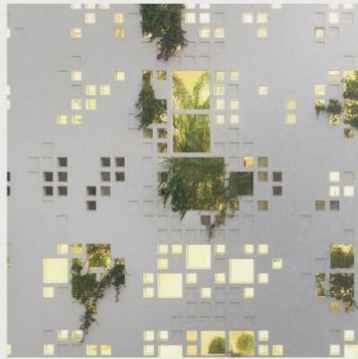


PHASE 03 / Development



LOOKBOOK

BARNSBURY ESTATE GARDEN



Design Palette

Typography

accessible, legible, simple

Helvetica Neue

ABCDEFGHIJKLMNOPQRSTUVWXYZ
abcdefghijklmnopqrstuvwxyz
1234567890

Color Palette



Earthier colors for the building materials and that correlate with the garden's contents.

Materials



brick



oak wood



granite

Plants

native, edible + easy to maintain



wild strawberry



elderberries



stinging nettle



wild garlic



watercress



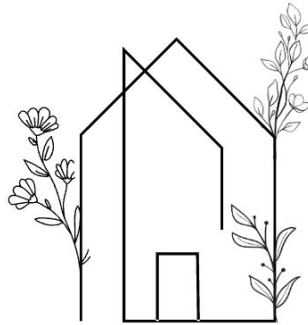
carrots

Location of Intervention

Adding to the green space
within Barnsbury Estate



PHASE 04 / Presentation







Proposal

Barnsbury Estate has a complicated history when it comes to housing. With this intervention, we intend to address this complex history while also providing a community-centered area for the people who live in this space.

By working with the local artist Stazzy, and drawing inspiration from Sam Elbahja's piece, *The Grid*, we hope to install a piece that contributes positively to this community. This piece is a scaled down model of one of the apartment complexes in Barnsbury Estate, but from each window grows various plants and greenery, with an emphasis on edible plants. The plants intertwine with one another, emphasizing the interconnectedness of community. Ideally, we would receive feedback from this community prior to installing this intervention, to ensure that this garden is a positive addition to this housing complex.

This space is currently experiencing a slow gentrification, but the city is working to combat this through an increase in affordable housing infrastructure. We hope to create a piece that is a testament to the importance of the community, the people currently living in this space, and the many people that inhabited this space previously.

Call to Action

This project aims to enrich the Barnsbury Estate area by engaging its community members through gardening and a shared third space. The natural elements of this design intervention help to foster a sense of community along with its beautiful flora. This garden structure stands as a symbol for the constant growth within the Kings Cross district, reflecting the history and perseverance of its housing and residents.

