

INTRODUCTION / Canary in the Coal Yard

Madeline, Kim, Sonja & Anish

PHASE/ 01. Research and Design Analysis

Historical Context

- Canaries were put in cages and carried by coal miners to indicate dangerous gas levels of carbon monoxide in coal mines located in and around London
 - They were favored because they were more sensitive to dangerous levels of carbon monoxide
 - Canaries would become asphyxiated when exposed to dangerous levels of carbon monoxide
 - 1911 Coal Mines Act required canaries to be used in the mines to detect dangerous gas levels
- Coal Drops Yard was a major distribution site of coal, which contributed to environmental pollution
 - The Great Smog of 1952 was the moment where London was the most polluted
 - Clean Air Act of 1956 enacted as a result of the Great Smog
- 1986 Britain outlawed the use of canaries in the mines

Our Proposal

We will incorporate life-size canary sculptures throughout the Coal Drops Yard to reference the history of the area as a coal distribution site. Several canary sculptures will be placed sporadically in the area in various contexts to activate the space. For this project, we imagine the life and history of the London Fancy canary breed as a larger symbol of the history of coal in London. Similar to how canaries were asphyxiated in the coal mines when exposed to carbon monoxide, we attempt to reference how pollution created by the manufacturing and distribution of coal in the Coal Drops Yard heavily impacted the overall air quality for humans and animals in London throughout history.

University Students

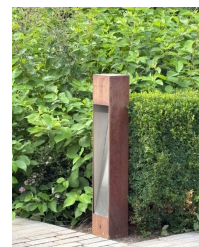
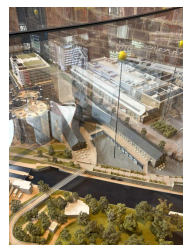


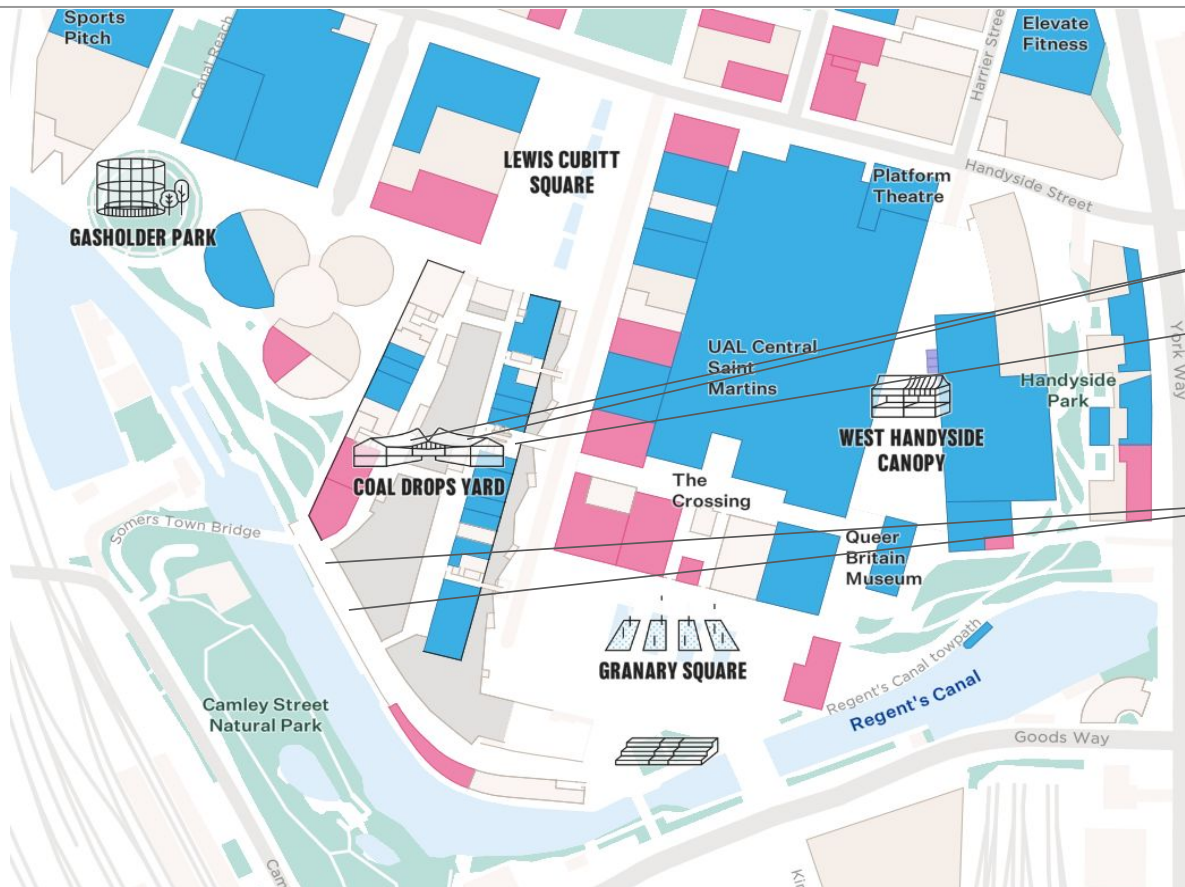
Shopaholic



Passerby







1 canary sculpture on
each roof

1 canary sculpture on the stairs

2 canary sculptures on
the walkway posts

Locations can be
changed if needed

PHASE/ 02. Concept and Design Proposal



PHASE/ 03. Detailed Design Solutions

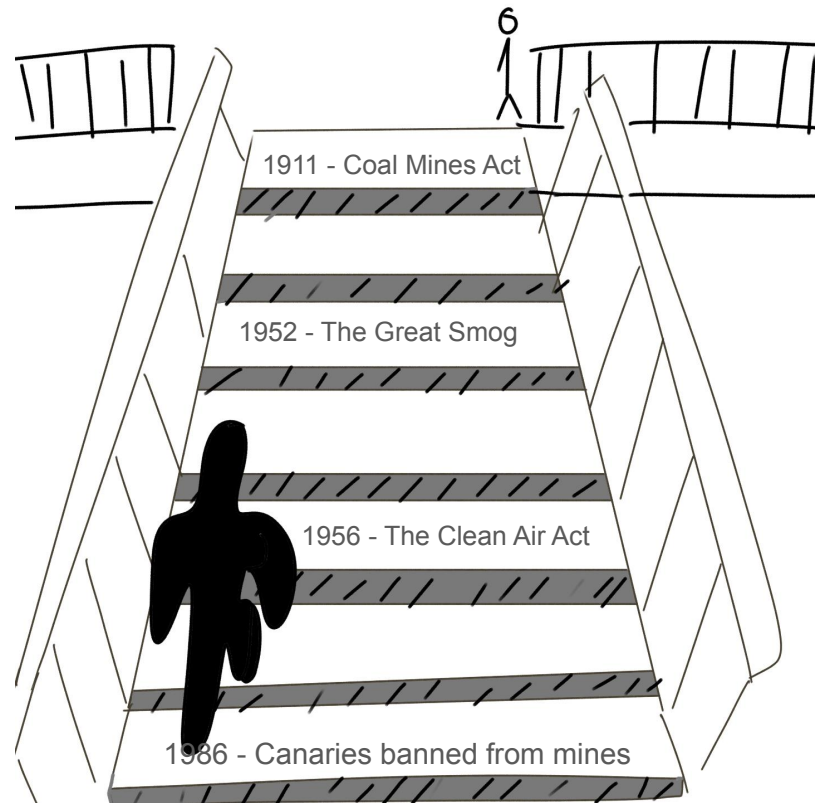
In-Situ Visualizations



In-Situ Visualizations



Stairway Timeline



Color Palette

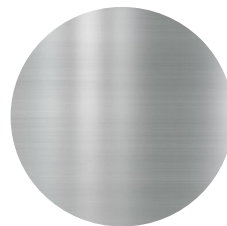


Yellow #FFD078



Black #000000

Material



Stainless Steel



Acrylic Paint

Sculptures will be coated in a glaze that will make the sculptures more resistant to harsh weather conditions

PHASE/ 04. Design Documentation and Intent

Marketing

We will collaborate with the Royal Society for the Protection of Birds to amplify the conservation of birds and wildlife as a result of environmental pollution.

Call to Action

Highlighting the impact of coal pollution in the environment through the history of mass coal production and distribution in the Coal Drops Yard.

