



# HAND IN HAND

Ava, Stella, Rohan, Ashley



## SITE ANALYSIS

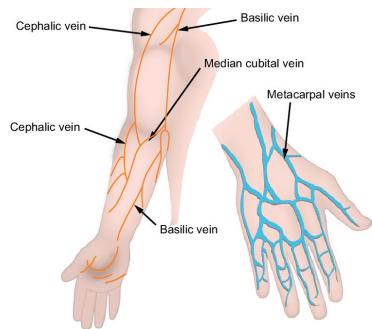
### Regents Canal:

- Imports from **northern industrial cities** to London
- Crucial to **industrial revolution** (1750- 1900 trade in metals, building materials)
- "Watermen"/ Boatmen: working class people labored in harsh conditions, many unions were formed

### Espérance Bridge (by the Canal Outdoor Cinema! )

- One of the final elements of the Kings cross redevelopment effort





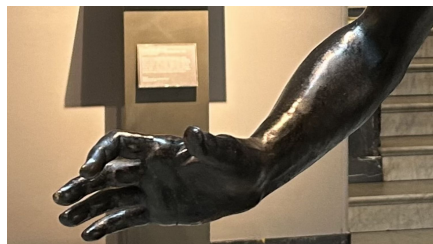
*Veins in arms mimic canals*



*Transportation and General Workers Union Badge - trade*



*Design for Disability – use of human body + science in art*



*V&A Sculptures of hands*



*Design for Disability – Sign Language*

## CONNECTION TO LOCAL HISTORY

### Worker Unions

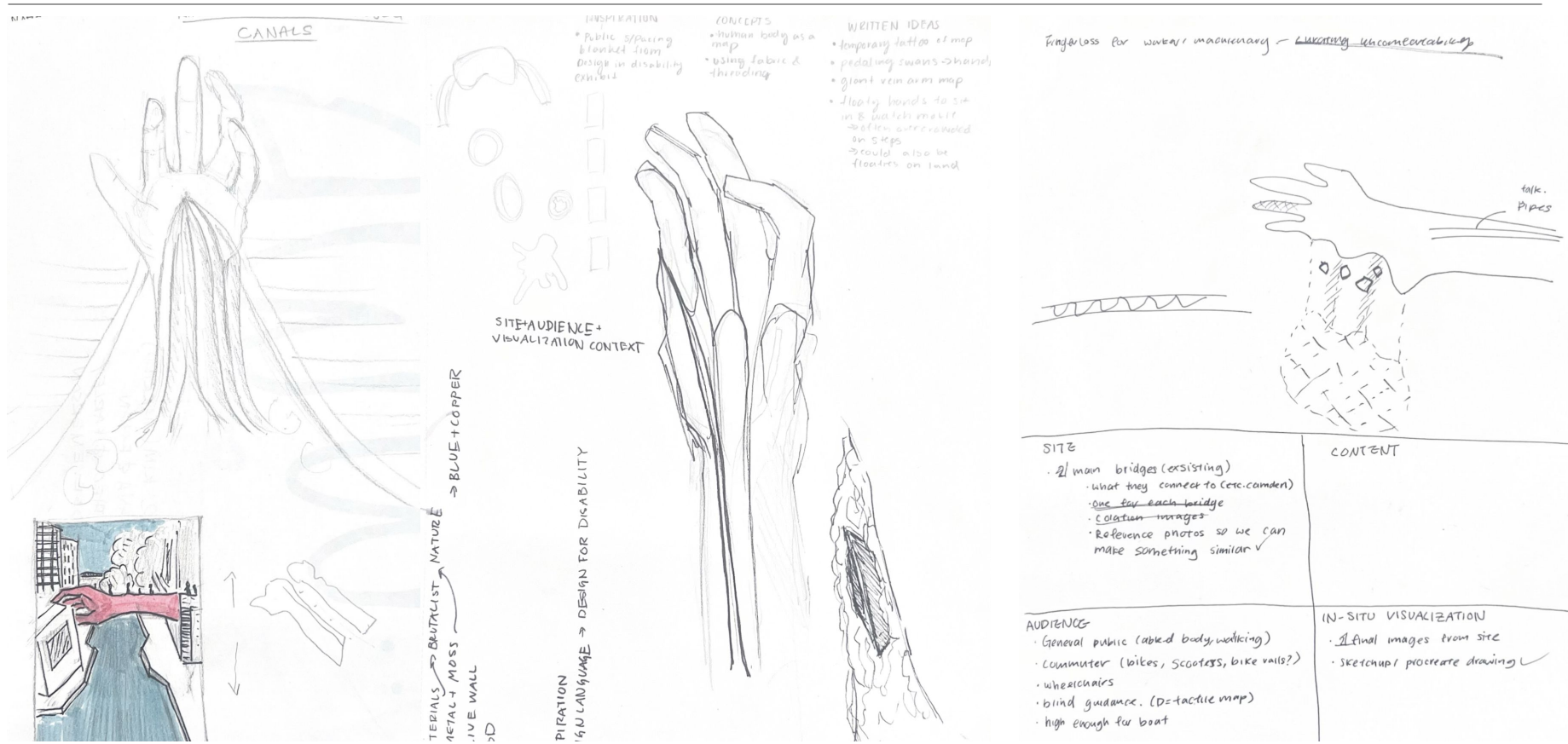
- Industrial revolution unions were part of an important movement for working class individuals in London.



### Transportation + Trade

- Veins as a metaphor: canals transport of goods around London; veins transport blood around the body.





## AUDIENCE & AUDIENCE NEEDS

### General Public

- Walking

### Commuter

- Biking
- Scootering
- strollers

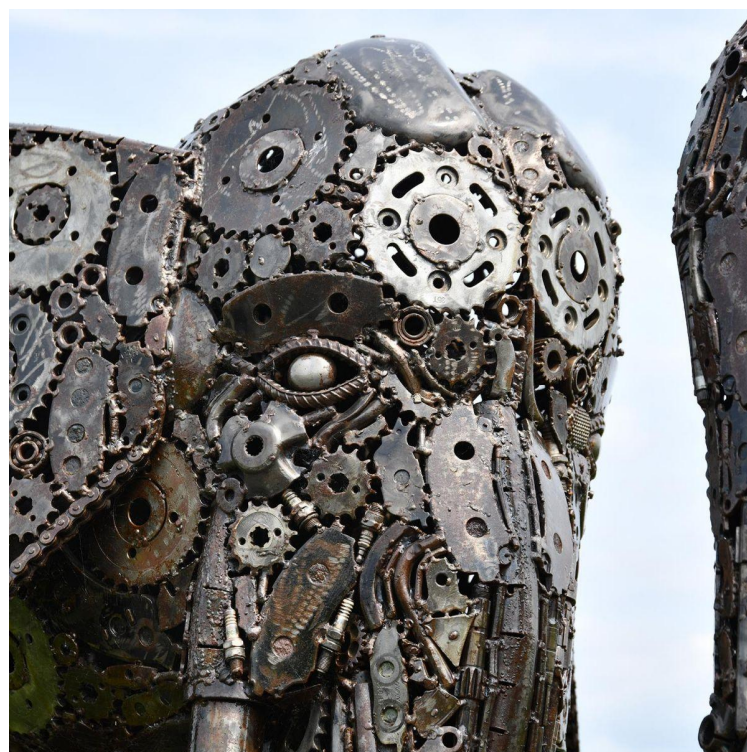
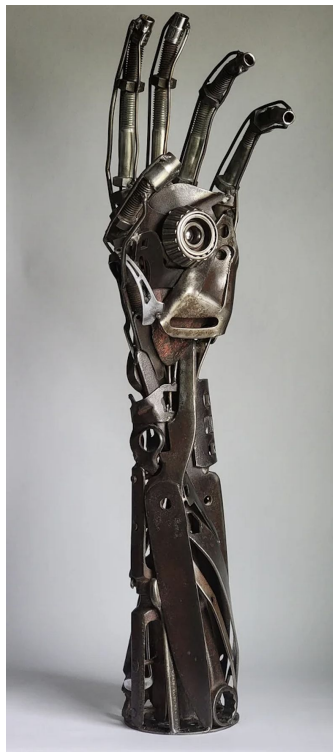
### Accessibility

- design for mobility
- design for vision

### Tourist boats / ships:



*Live Wall + Industrial Materials –  
Intertwining Nature and Industry*



*Scrap Metals / Items found in the canal*



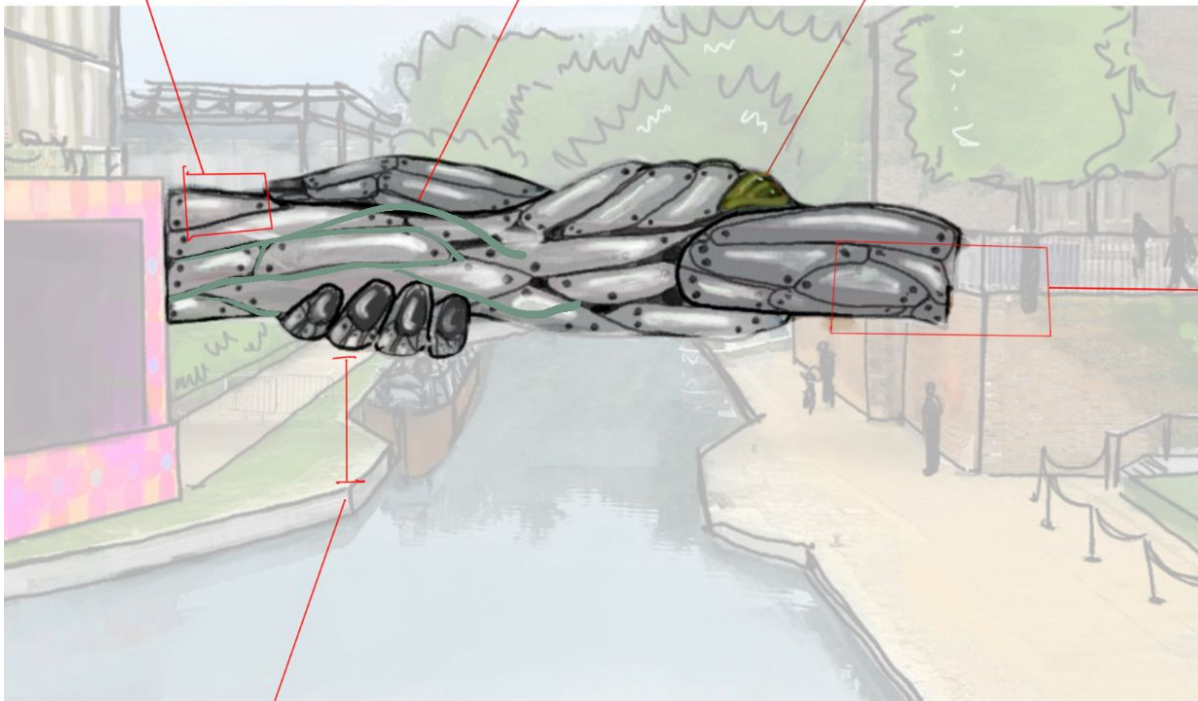
"Steampunk"  
esque materials:  
stainless steel /  
canal scrap  
metals

Wooden Vein '

- moss will naturally grow only on wooden vines
- blend of nature/ industry as a collective system

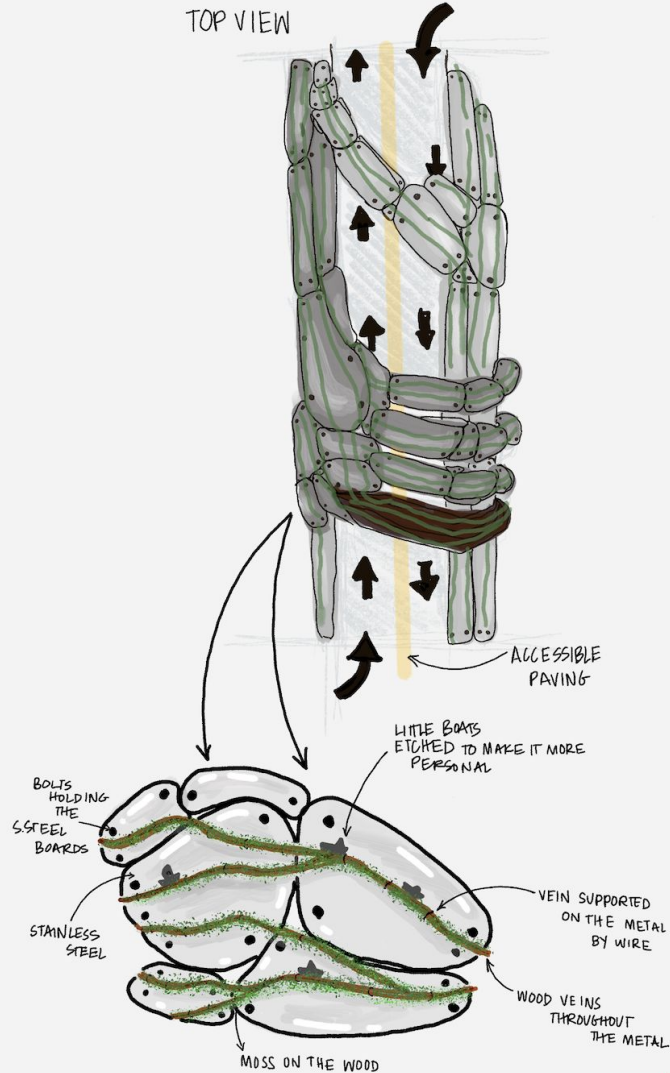
Invisible finger

- reference to common injustices of the working class during the Industrial Revolution
- wood- moss will grow



Bridge level to ground  
- accommodates for wheelchair  
users, bikes, and scooters

Bridge height accommodates  
for boat transportation



## Accessibility:

### Mobility (wheelchairs)

- wide walkway no stairs

### vision-impaired:

- accessible wayfinding via tactile paving



A vibrant, hand-drawn illustration of a canal scene. On the left, a tall building with a grid-like facade stands next to a smaller, brightly colored building with a pink and orange polka-dot pattern. A canal flows through the center, with a small boat on the left and a bridge crossing it in the middle. People are walking on the bridge and on the paths along the canal. On the right, there are green steps or a small amphitheater, and more people are walking. The background features more buildings and trees under a cloudy sky.

# THANK YOU

Ava, Stella, Rohan, Ashley