



THE FLOW OF PRIDE

By Sophia, Stella, Anish, Francesca
Group 1

OPENING ACTIVITY

Write a quick piece of advice, crumple it up, and give it back to us. Open a surprise message of anonymous wisdom from the room.

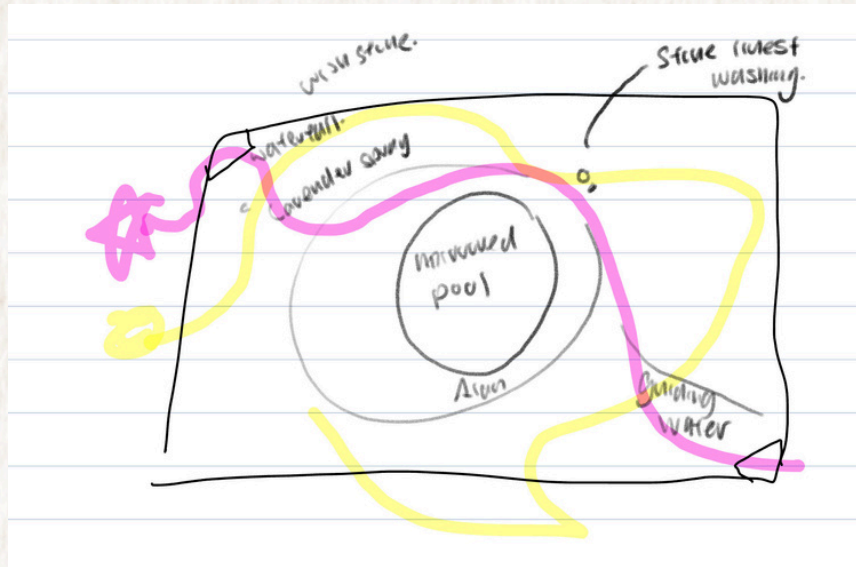


Four vibrant, multi-colored rainbow brushstrokes are positioned in the corners of the page, framing the central text. Each stroke is composed of multiple overlapping lines of red, orange, yellow, green, blue, and purple, creating a textured, hand-painted effect.

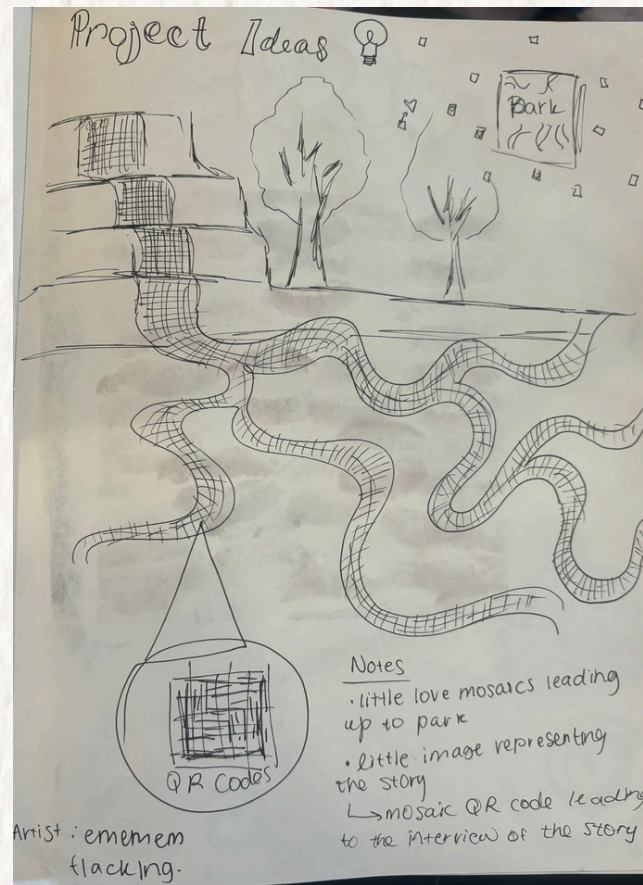
PHASE/ 01. RESEARCH AND DESIGN ANALYSIS

BRAINSTORM

STELLA



SOPHIA



GOALS

- Connecting people through water
- Telling stories through art
- Timeline progression

GUEST ANALYSIS



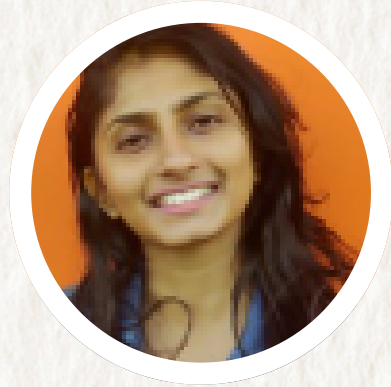
Graham - Elder Mourner
65
He/Him

Studier
Background: Manchester resident. Lost friends during the AIDS crisis. Regularly visits the Beacon of Hope in Sackville Gardens.

Goals: To reflect, remember, and feel connected to a collective past.

Design Needs:

- Gentle, quiet areas for personal reflection
- Seating space for stillness
- Subtle sensory elements like water sound or flowers



Raya - Queer Activist
22
They/Them
Stroller

Studier
Background: Longtime Manchester resident. Lost friends during the AIDS crisis. Regularly visits the Beacon of Hope in Sackville Gardens.
Goals: To reflect, remember, and feel connected to a collective past.
Design Needs:

- Gentle, quiet areas for personal reflection
- Seating space for stillness
- Subtle sensory elements like water sound or flowers



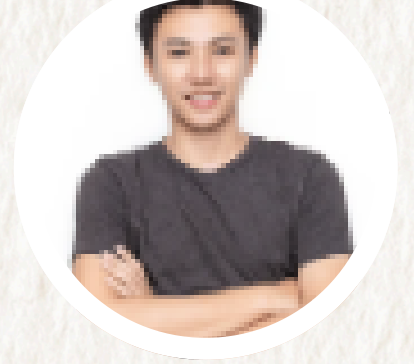
Andreja - International Visitor
34
She/They

Streaker
Background: Visiting from Slovenia. Artist with an interest in queer narratives and public art. Curious about local culture and history.

Goals: To learn about LGBTQ+ stories in Manchester in a poetic and accessible way.

Design Needs:

- Interactive memory tiles
- Poetic, multilingual descriptions or guided walk audio
- Visual symbols



Jay - Commuter/Student
19
He/They

Background: Walks through the garden on the way to lectures. Not always stopping but open to small moments of insight.

Goals: Quick connection to meaningful content without needing lots of time.

Design Needs:

- Bold visual features (mosaic that catches the eye)
- Short quotes or poetic lines along the path
- Storytelling through waterflow, tiles, textures



SITE ANALYSIS



Location: Sackville Gardens, a historically significant LGBTQ+ memorial space.

Existing Features: Alan Turing statue, green space, cobbled and paved pathways, benches, and strong community symbolism.

Constraints: existing memorials, balance art with historical context, maintain green space integrity, noise pollution



CONTENT ANALYSIS

EuroPride Manchester Pride evolution

EuroPride in 2003 drew around 37,000 people

2003

2022

Restoration of the Beacon of Hope

Community-led efforts ensured restoration of the HIV memorial. As a result, there was a rededication ceremony attended by local organisations and city leaders.

Alan Turing's persecution

Born in Manchester, Alan Turing was a celebrated mathematician and a gay icon. He was convicted and for homosexuality and was later executed for it.

Anti-Section 28 protest:

Over 20,000 people marched in Manchester against government legislation that prohibited LGBTQ+ "promotion" in schools.

1988

1954

1880

Drag ball raid in Hulme, Manchester

A fancy-dress ball was raided by police; 47 men arrested on charges of "soliciting" same-sex encounters.

Marketing Strategy

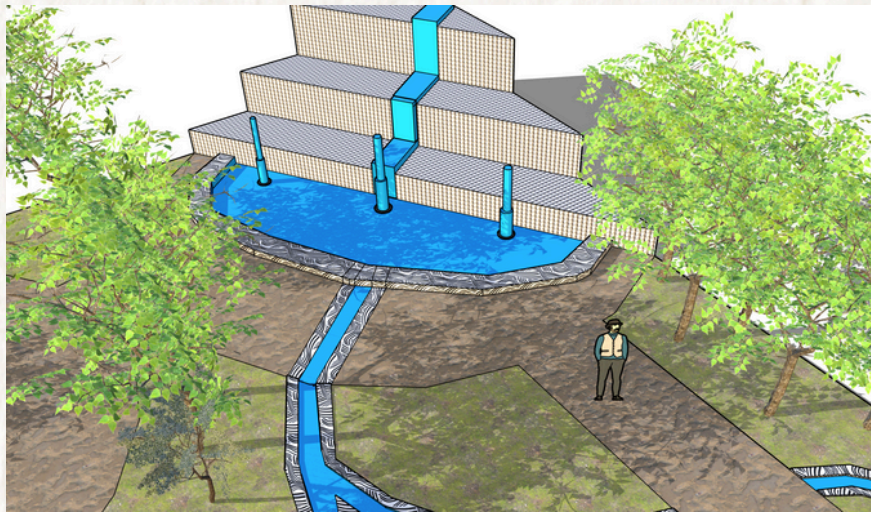
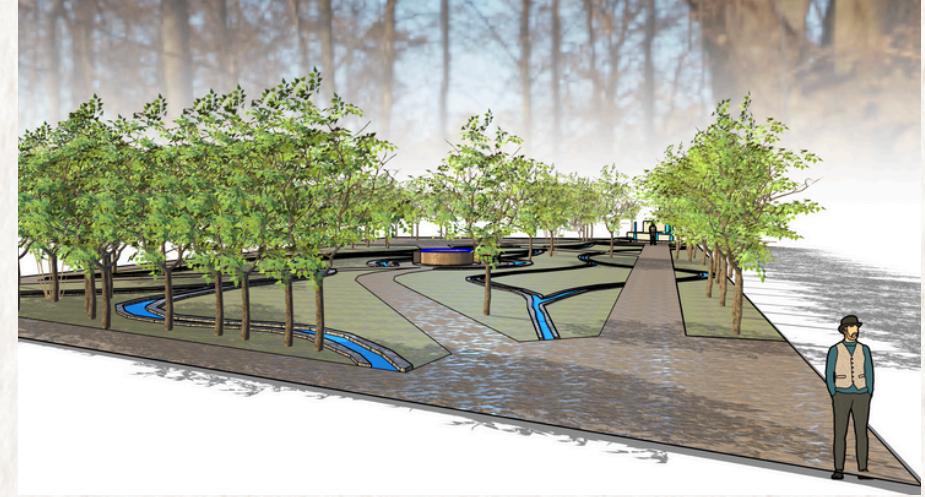
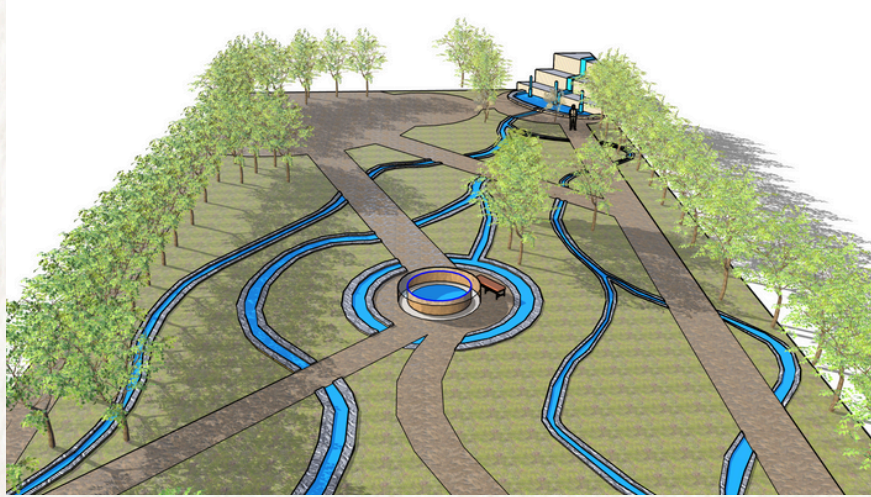
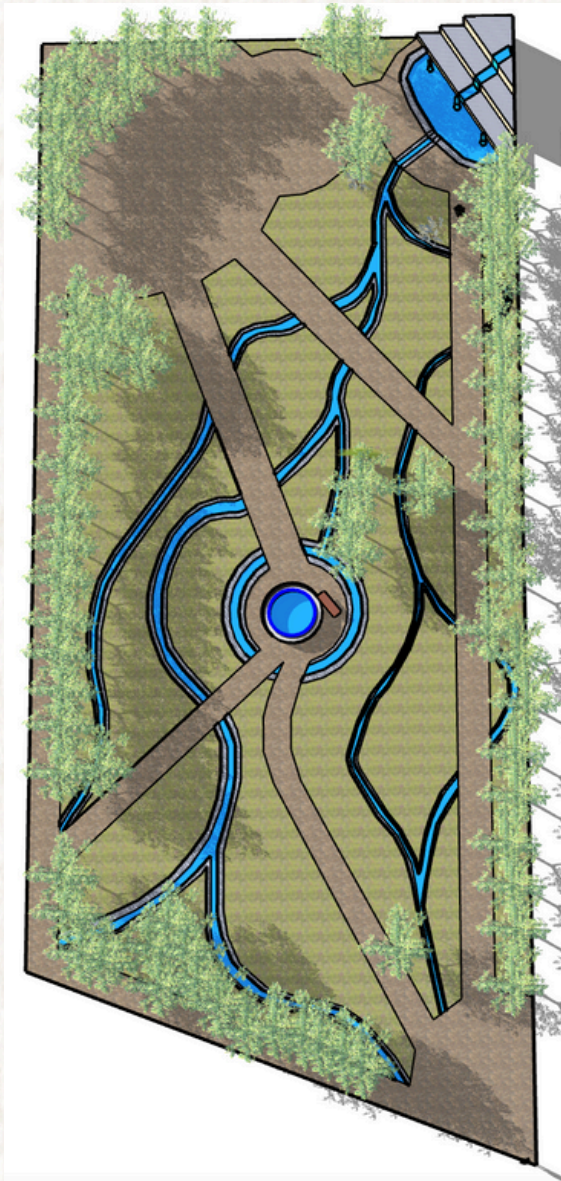
Community Partnerships

- Collaborate with LGBTQ+ groups, local queer artists, and archives
- Distribute across cafés, galleries, bars, libraries, and venues
- Promote through the museum and archive mailing lists

Monthly Participation Events

- “Slip into History” – distribute a story slip of paper, gather at the waterfall, watch it flow downstream
- Each slip highlights queer histories: love, community, care, grief, resistance, joy
- paper dissolves, merges, and flows downstream, reflecting the movement of people, moments of acceptance, and the coming together of community along different paths.

3D MODEL



Streams:

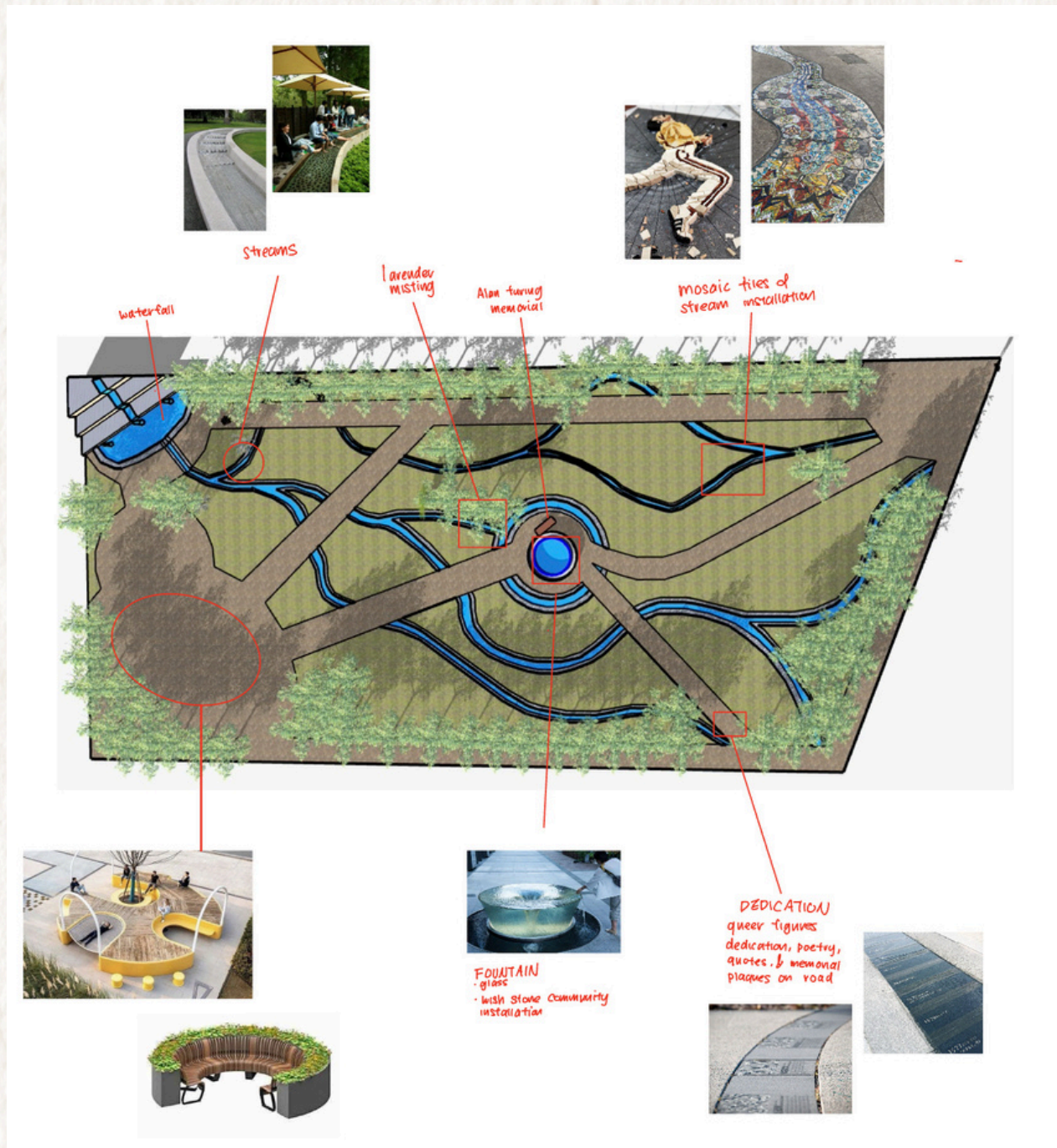
- a shallow canal
- flows under the walkway when it crosses
- Each branch of activism traces back to the canal's quiet origins

benches:

- seating area invites visitors to pause—like an eddy in the stream
- movement slows, and ideas circulate
- people sit together, converse as ideas flow together, and feel connected to communities pushing for change and activism

waterfall:

- the beginning of flow, sending water, stories & time floating downstream



mosaic tiles (stream borders):

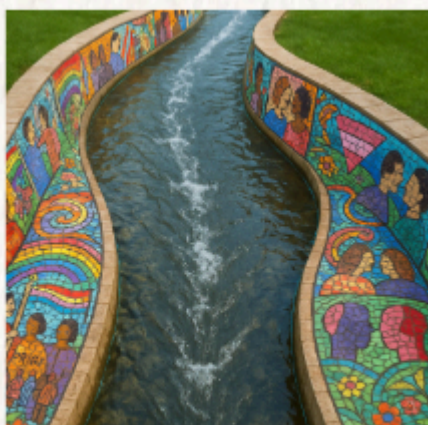
- chronological figures & scenes of Manchester queer history & people
- timeline follows the flow of water, each branch of activist history goes back to the beginning to Canal Street
- as people float degradable paper down the stream, it disappears into history, branching off in unpredictable ways

walkway:

chronological stone etching
dedication of queer icons,
figures, activists, and events



LOOKBOOK



DESIGN PALETTE



Deep Indigo
#4B0082
Mystery, memory,
mourning (AIDS
remembrance, night
water)



Stone Grey
#A8A8A8
Background
for mosaic
foundation



Blue #1E90FF
Turing's
treatment,
Manchester
Rain



Red
#D72638
Activism,
urgency



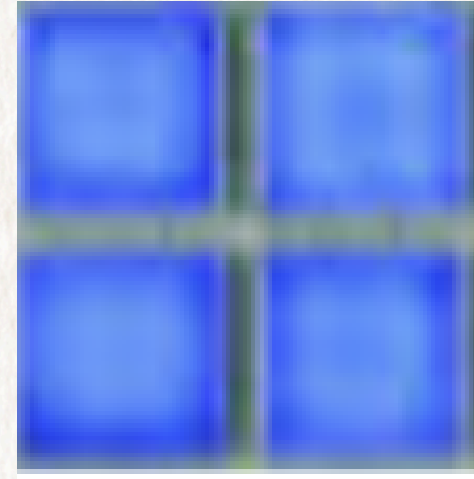
Green
#77966D
Gardens,
serenity



Gold
#FFD700
“Hope”
and light

MATERIALS

Recycled Ceramic Mosaic Tiles
For portraying water



Polished Stone
For etching names, dates, quotes



Tempered Glass
For Layered effects in fountain structure



TYPOGRAPHY

Sans-Serif **for information**

Classic and Narrative

Italics Sans-Serif **for names, dates, quotes**

Honorific font nice for dedications and history

SYMBOLS

Water drop



Rainbow flag



Pink Triangle (AIDS remembrance, ACT UP)



Our design goal is to propose an experiential intervention for Sackville gardens that interprets local queer history, responds to the environment & engages the senses. We wanted to recognize the history of queer gatherings and the community in Manchester's history. Since Canal Street became a gathering space for gay men following the waning of the industrial revolution, the visibility of the Manchester queer community has grown into the iconic cultural hub we know it as today. To honor the beginnings of the Manchester queer community around the Rochdale Canal, we centered our plan around the theme of a water environment in our garden.

Major features include:

- A mosaic visual timeline of queer history runs throughout the entirety of the garden
- a flowing stream starting with a waterfall made of mosaic recycled glass tiles
- a community installation of writing on rocks
- lavender-scented mist sprays

We installed features in the park that cater to sensory engagement, considering the diverse needs of visitors, their activities, companions, and emotional responses.

The installation would be eco-conscious, inclusive, and designed with accessibility in mind. We hope it becomes a landmark and a piece of public art that people return to and talk about. We envision this as a tribute to everyone who has ever felt marginalized or unseen, as well as a third space where people can connect with art, history, and one another. We want visitors from all walks of life to experience collective joy, honor community resilience, process shared grief, and build lasting connections.