

**Title:** Playground of Sound

**Group Number:** 4

**Group Name:** 5 Dancing Princesses

**Members:** Abby, Inbar, Akari, Juliana, Austin

# PHASE/ 01. Research and Design Analysis

Creating community exhibition to bring the different populations of King's Cross together. The space is intended to be suitable for both adults and children and accommodate people of different physical ability levels

The entry point of Coal Drops Yard is an intersection of many populations within King's Cross Area:

- Tech Sector
- Creative Sector
- Families
- Residents

Traffic flows into this area from many parts of King's Cross as people flock to Coal Drops Yard for food and commerce activities. The combination of food, commerce, music, and **play** is a method to unify these populations.

The theme of **harmony** and **disharmony** within the music relates to the tension between the new growth/gentrification of King's Cross area and the history of industry and poverty in the region.



## Location

A large open space at the entrance to Coal Drops Yard. The space is a large courtyard in the entrance to the market where a large exhibition would not block the flow of traffic.





Large open space at the intersection of many flows of traffic from around King's Cross area

**Red:** Borders of the Walkway

**Blue:** Moving Direction of People

**Yellow:** Border of the Exhibition

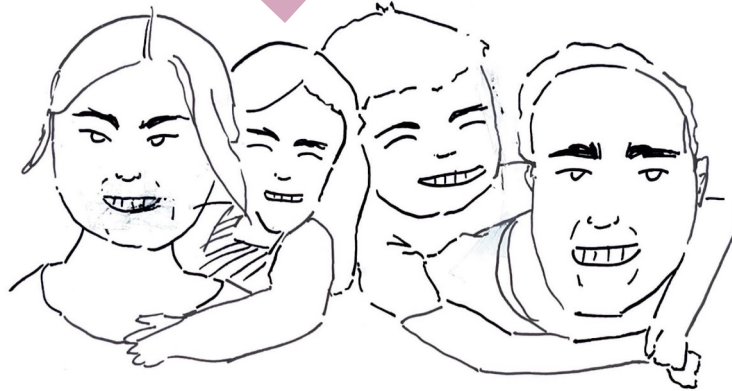
Radius: 20 ft

I'm a busy tech worker in King's Cross area. I don't usually stop to engage with people in the area because I'm so busy



Ryan  
- 36 Y/O  
- Works at Google

We're a family with young children looking for fun activities to engage them in when we go to King's Cross. Our children tend to engage most with tactile, hands on activities



The Roberts  
- Local Family

I'm an art student at CSM and sometimes I go grab food from Coal Drops Yard during my breaks in between lectures



Carly  
- 20 Y/O  
- Art Student



Yōkai Onomatopoeic Machine (Young V&A)



Playground talk tube





Liquid Floor Tile (UAL materials library)

## Sensory Liquid Floor Tile

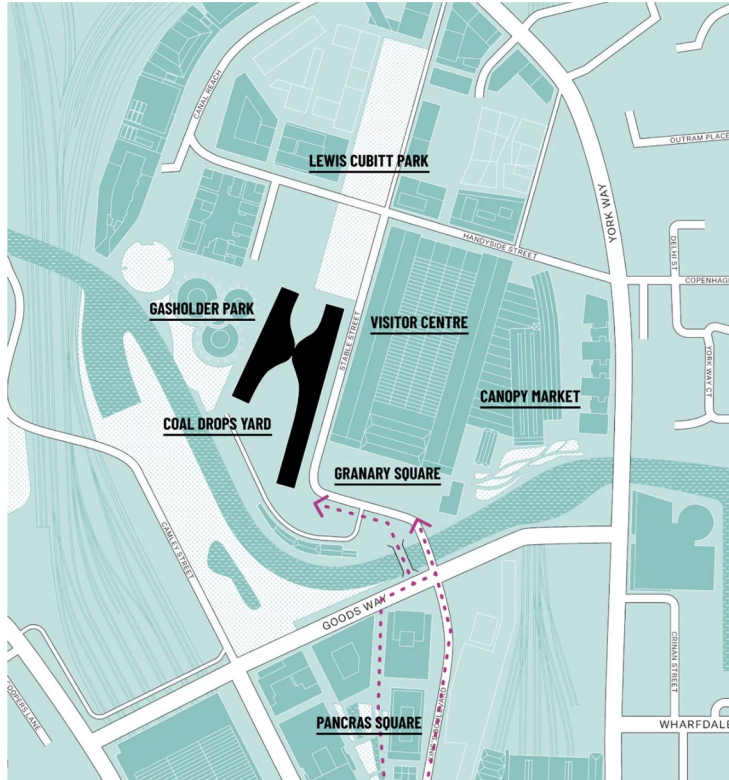
Every step or movement will cause the liquid gel to shift in an array of patterns. Waterproof, non slip and can carry loads up to 500 kg per tile. The recipe is simple, although its realization is undoubtedly, more complex. Two thick sheets of flexible Plastics, welded in periphery, one of two coloured fluids encapsulated between the two walls, and, as a result, different effects of colour and light in response to each pressure.



Barbie 12 Dancing Princesses tile scene

## Weight sensed tiles

When visitors step on tiles it triggers an ambient sound to be played from speakers around the circular exhibition space



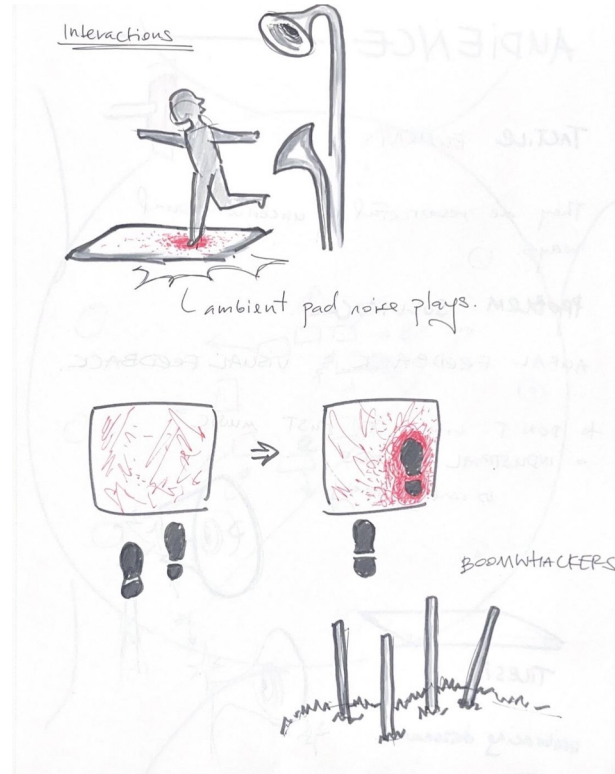
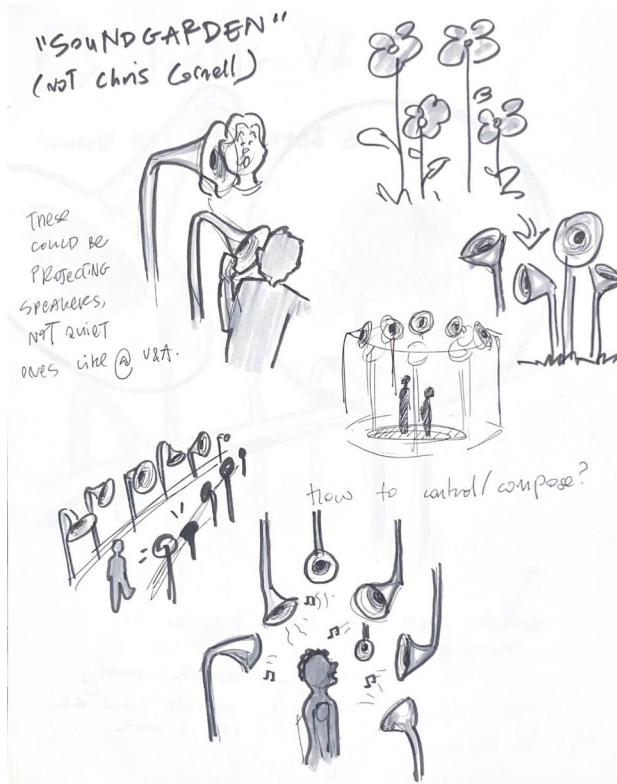
## Kings Cross -7 Sections

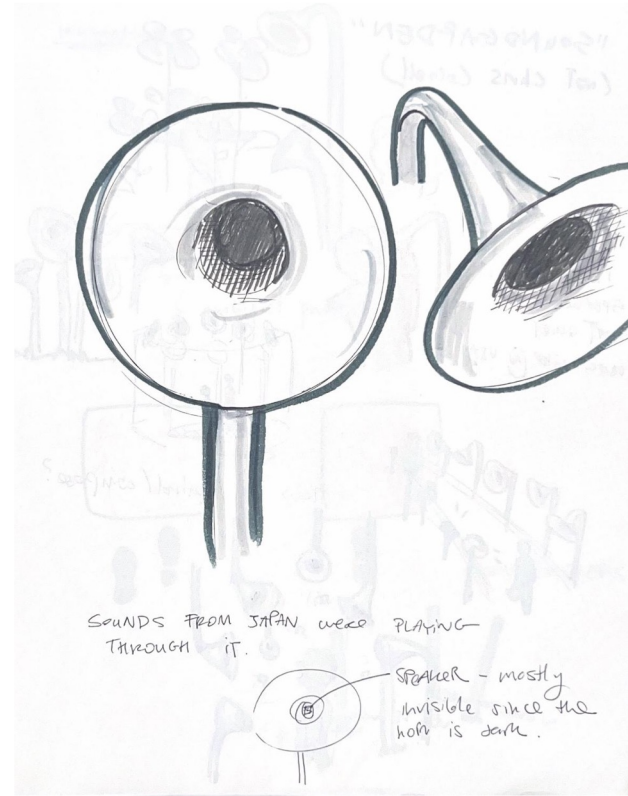
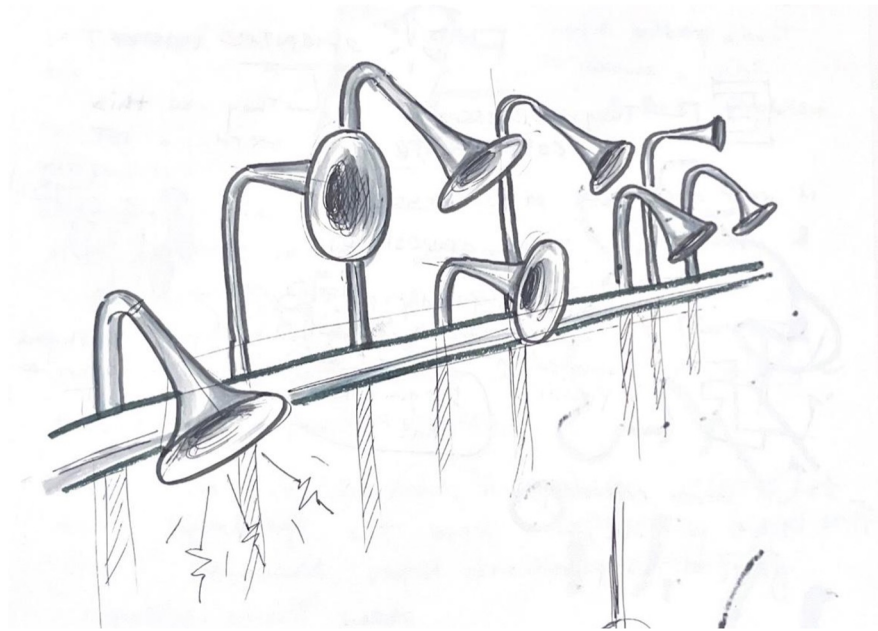
- Lewis Cubitt Park
- Central St. Martins / Visitor Center
- Canopy Market
- Granary Square
- Pancras Square
- Coal Drops Yard
- Gasholder Park

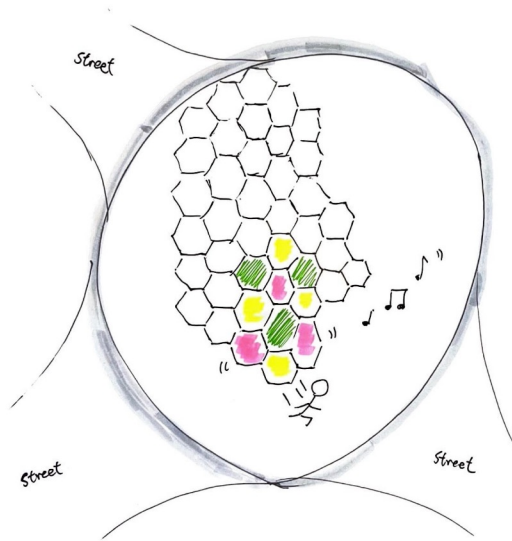
						
Granary Square	Lewis Cubitt Park	Canppy Market	Pancreas square	Canppy Market	Coal Drop Yards	Gasholder Park
<b>048BA8</b>	<b>2B9E64</b>	<b>E9C46A</b>	<b>EEE2D3</b>	<b>8E908D</b>	<b>42444D</b>	<b>D36246</b>
Blue (Munsell)	Shamrock green	Saffron	Almond	Battleship gray	Charcoal	Jasper



## PHASE/ 02. Concept and Design Proposal

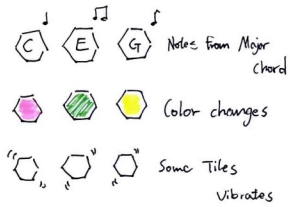




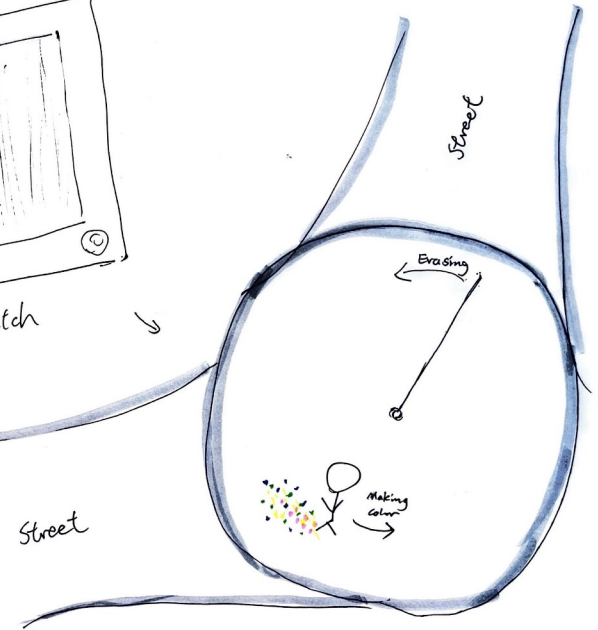
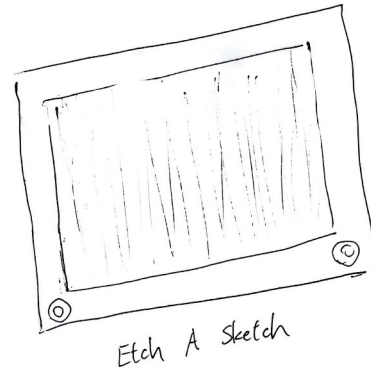


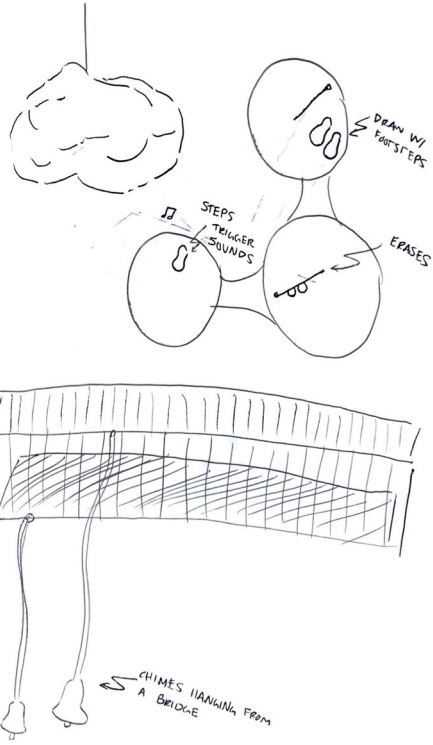
7. 29. 2024

- Tiles
- make music / sound
  - vibrates
  - turns to color

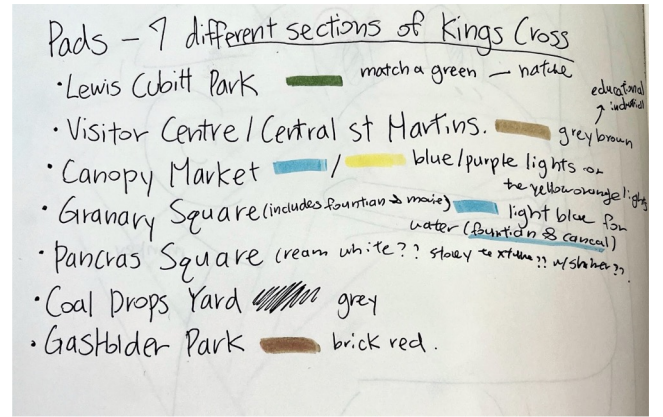
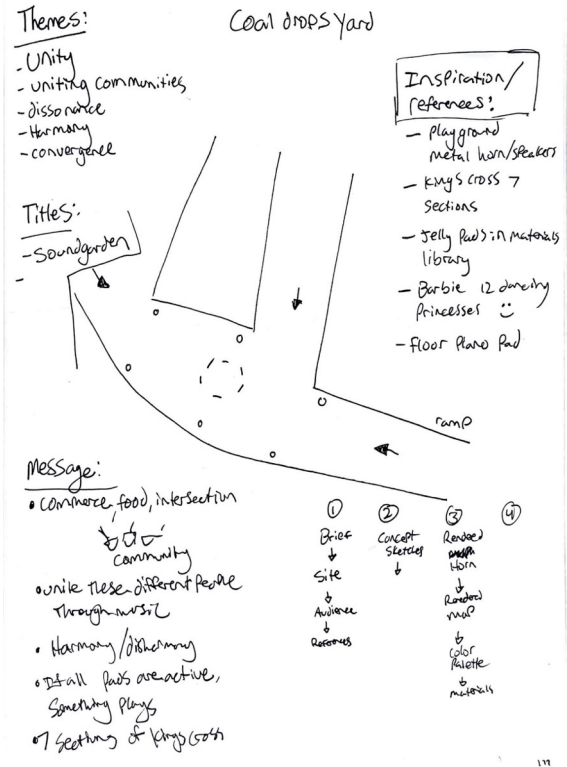


7. 29. 2024

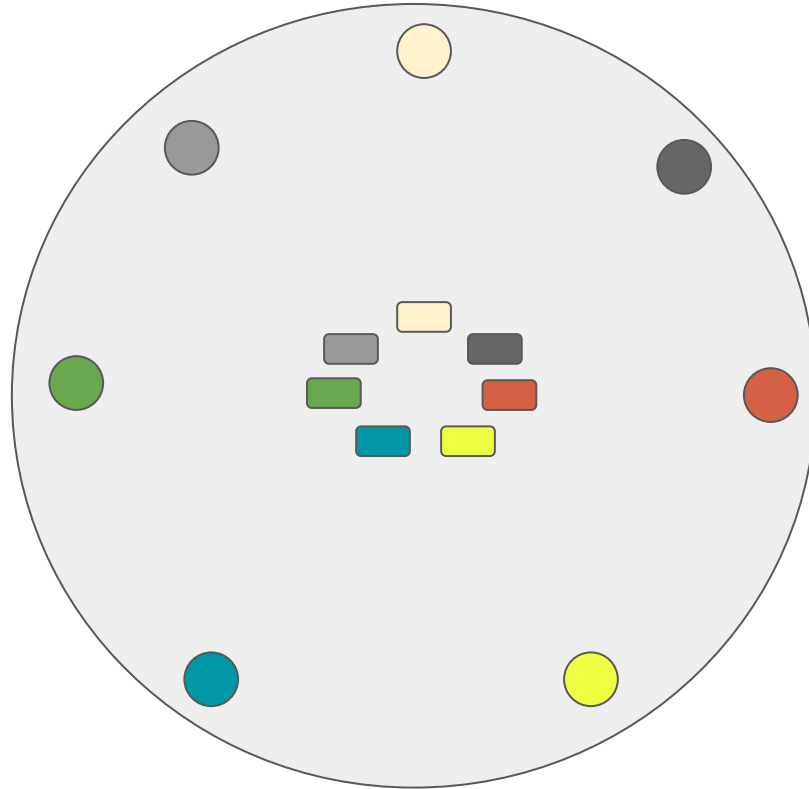




108

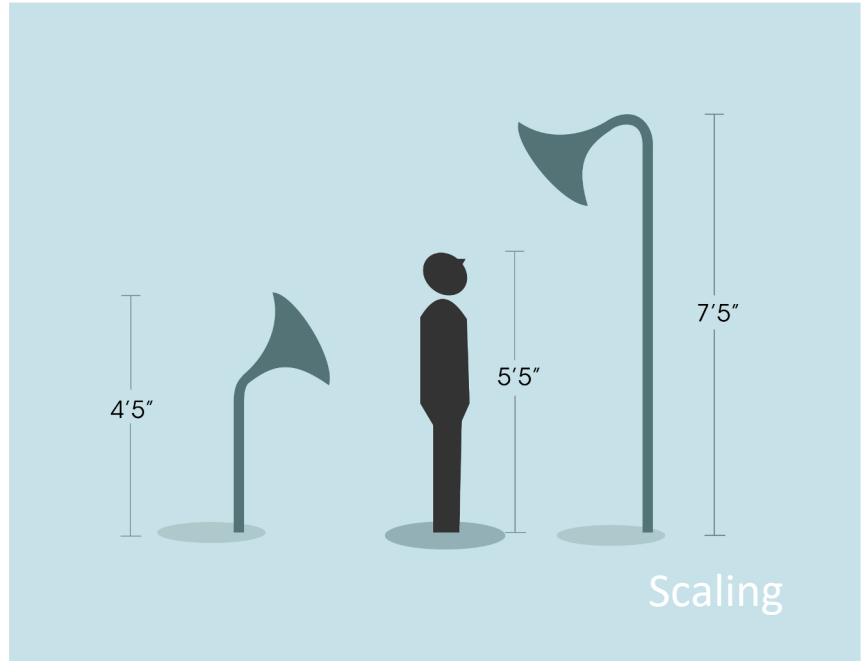


# Floorplan



## PHASE/ 03. Detailed Design Solutions





## Floor Tile Activator Detail



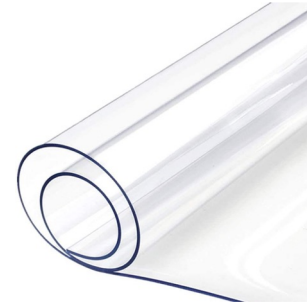
## Materials:



Recycled Metals from Local Industry



Colored Liquid Gels



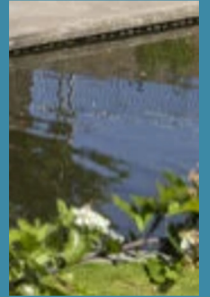
Flexible Plastic

						
Granary Square	Lewis Cubitt Park	Canppy Market	Pancreas square	Canppy Market	Coal Drop Yards	Gasholder Park
<b>048BA8</b>	<b>2B9E64</b>	<b>E9C46A</b>	<b>EEE2D3</b>	<b>8E908D</b>	<b>42444D</b>	<b>D36246</b>
Blue (Munsell)	Shamrock green	Saffron	Almond	Battleship gray	Charcoal	Jasper

# Granary Square



- Canal
- Fountain

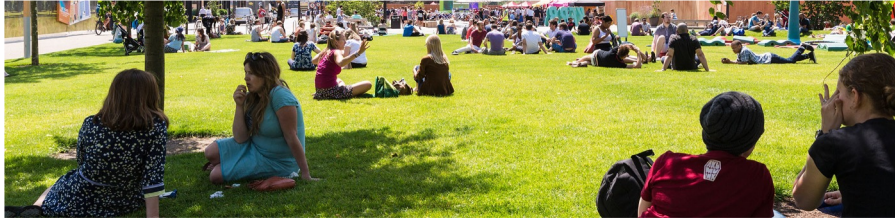


**048BA8**

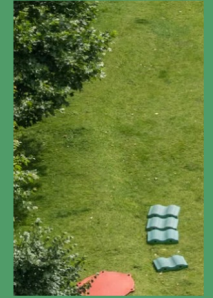
Blue (Munsell)



# Lewis Cubitt Park



- Nature
- Slow life
- calming



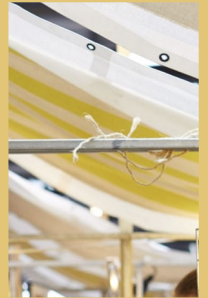
**2B9E64**

Shamrock green

# Canopy Market



- Lights
- Warm
- cozy

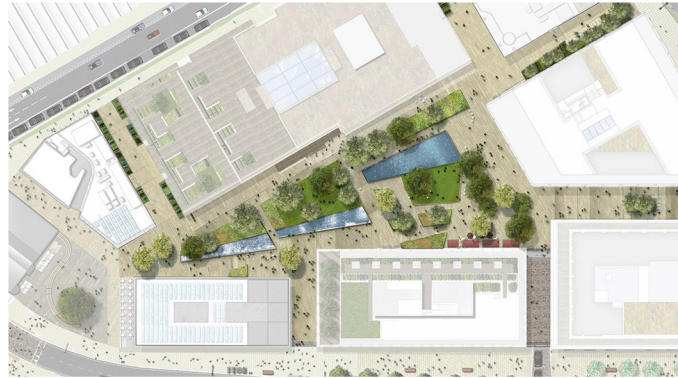


**E9C46A**

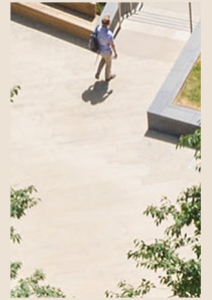
Saffron



# Lewis Cubitt Park



- Modern
- Clean
- Office buildings



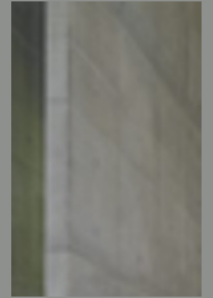
**EEE2D3**

Almond

# Central St. Martins



- Historical architecture  
architecture/building



**8E908D**

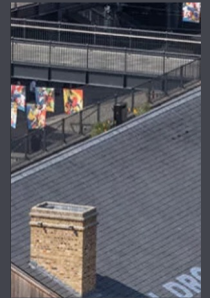
Battleship gray



# Coal Drop Yard



- Historical architecture  
architecture/building



42444D

Charcoal

# Gasholder Park



- Brick for what the gasholder looked like



D36246

Jasper

## PHASE/ 04. Design Documentation and Intent

# A taste of the sound...

Thank you!