

# COMING TOGETHER - PIECE BY PIECE

A Mosaic Themed Wayfinding System for Baggins End Domes

## Project Introduction/Description

Baggins End Domes is UC Davis Student Housing that is distinctive for its dome like buildings and its community based culture.

For this project, inspiration came from the near closure of the Domes in 2012, where the UC Davis community came together to fix the domes in response to possible closure. Another source of inspiration was the mosaic tiles in the entrance of the location.

The theme of mosaic was chosen to represent the variety of people, of all kinds and backgrounds, who come together to make something beautiful -- a close-knit thriving community. This wayfinding system employs this theme through its mosaic inspired borders, pictograms, and stained glass.




## Site Evaluating Conditions


Baggins End Domes is a distinctive communal living area with 14 fiberglass domes and a lot of greenery. Despite its unique charm, the site currently lacks a comprehensive sign system, with only a directional sign pointing towards the yurt and another sign identifying Herb Hall. The absence of cohesive signage creates a challenge for residents and their guests, particularly in navigating the space and locating specific domes. As a result, guests often struggle to find their way independently, highlighting the need for an improved sign system to enhance accessibility and ease of navigation throughout the community.




## Audience Personas




**Margot** is a 22 year old living at the domes and works as the counter person at a piercing shop. Margot is sociable and values meaningful connections. She enjoys the vibrant and eclectic atmosphere of the domes and appreciates the sense of community among its residents. Margot wishes there were more areas for residents and their guests to gather more comfortably at the domes.




Allie is a 25 year old psychology major at UC Davis who lives at the domes. She works part time at Peets and when she is not studying enjoys hanging out with her friends. Allie loves living at the domes but thinks there could be some additions that would improve the space, including a welcome sign and the history of how they were created as well as a laundry sign and a sign directing people towards the fruit trees.



David is a 50 year old businessman visiting his son, who is a student at UC Davis. While on his way to campus he passes the domes and is intrigued by the unique living environment. David's main goal is to spend quality time with his son during his visit to UC Davis and learn more about the campus and its surroundings. He is particularly curious about the domes and hopes to gain insights into their history, design, and purpose.

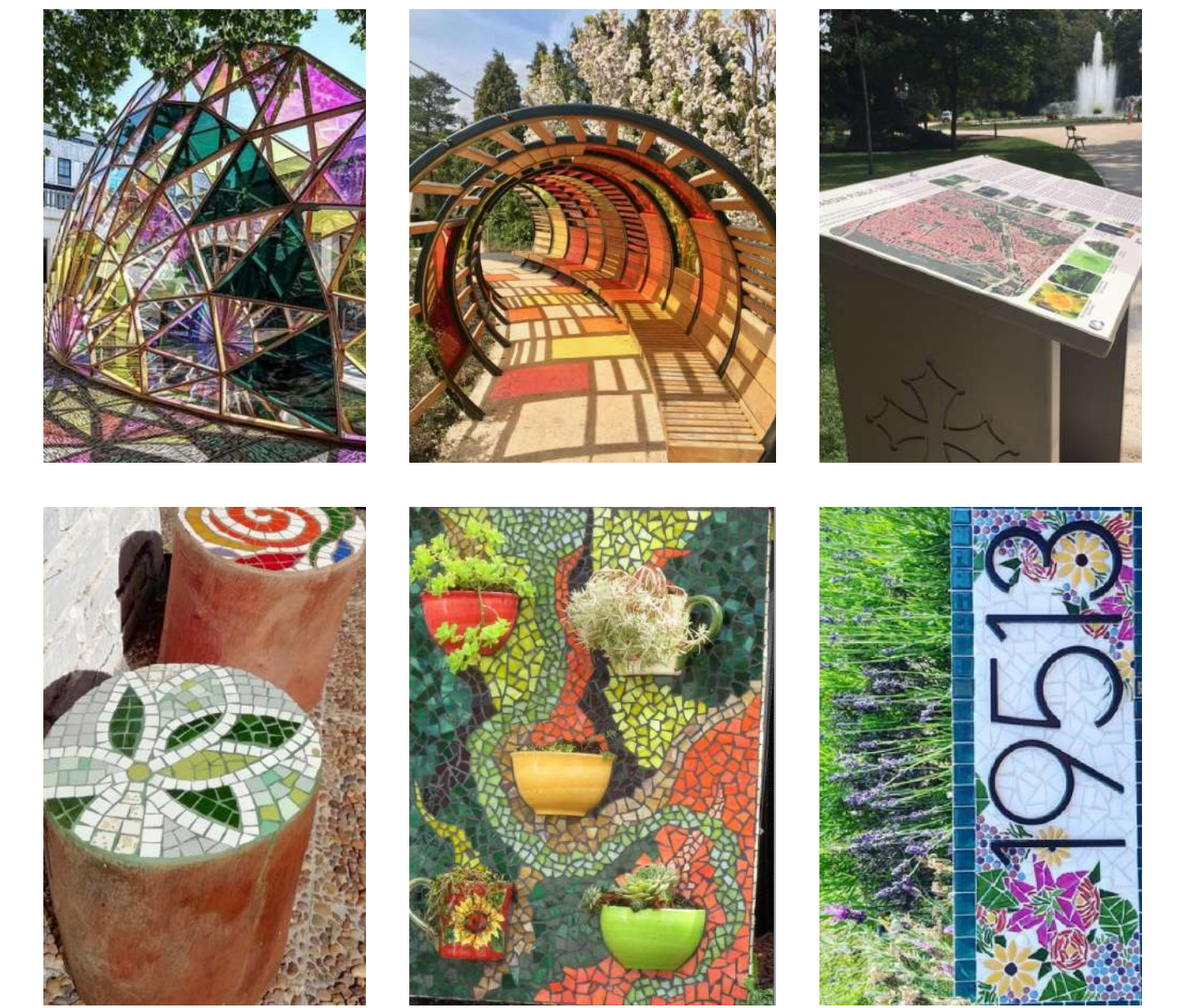


Carl is a 30 year old living at the domes. He went to UC Davis for environmental science and now works in the area. He is passionate about sustainability and appreciates the innovative design of the domes and the community's focus on environmental consciousness. He would like to bring more awareness to their mission and lifestyle.



Jared is a 26 year old english major at UC Davis who is friends with Allie and also works at Peets with her. He has only gone to the domes once or twice for the parties they sometimes throw. Since he is unfamiliar with the area he feels it would be nice if there were more signs directing him around the domes.

## Look Book



## Vocabulary of Sign Types

## Sign Location Plan

## In-Situ Renderings

## Form, Palette, & Materials

**Type**  
 Rolner  
 ABCDEFGHIJKLMNOPQRSTUVWXYZ0123456789  
 Saira  
 ABCDEFGHIJKLMNOPQRSTUVWXYZabc  
 defghijklmnopqrstuvwxyz0123456789

**Color**

**Pictograms**

## Sign Details

**Materials**

The design of this signage system drew inspiration from the mosaic elements prevalent in the dome area. These elements formed the basis of the primary materials incorporated into the signs. By employing these mosaic materials in both the frames and pictograms of the signs, we ensured a cohesive visual identity. Additionally, the color palette was derived from the vibrant hues found in the mosaics, communal tools, and vegetation found in the community area. By selecting bold colors, the signs stand out against the backdrop of the white domes, ensuring clear visibility.