

SACRAMENTO CHILDREN'S MUSEUM



trish ang | stella hong

Background

The [UC Davis Exhibition Design](#) class of Fall 2006 was asked to develop ideas regarding future exhibits at one of four museums for the entire 10 week quarter. One assignment differed from the others, in that the museum itself had not yet been built. This was the [Sacramento Children's Museum](#).

Sacramento is the capital of California and a growing city, yet it lacks a children's museum. A group of dedicated volunteers came together and the Sacramento Children's Museum is now in its early stages of development.

We, Trish Ang and Stella Hong, chose this assignment to focus on because of its unique requirements and children-related focus. Beginning with an entirely new structure, we planned out the museum and an exhibit down to specific details such as typography, materials, layout and color. The following is a compilation of our work for the Sacramento Children's Museum, inspired by the diverse Sacramento region and of course, aimed towards [children](#).



SACRAMENTO
CHILDREN'S MUSEUM

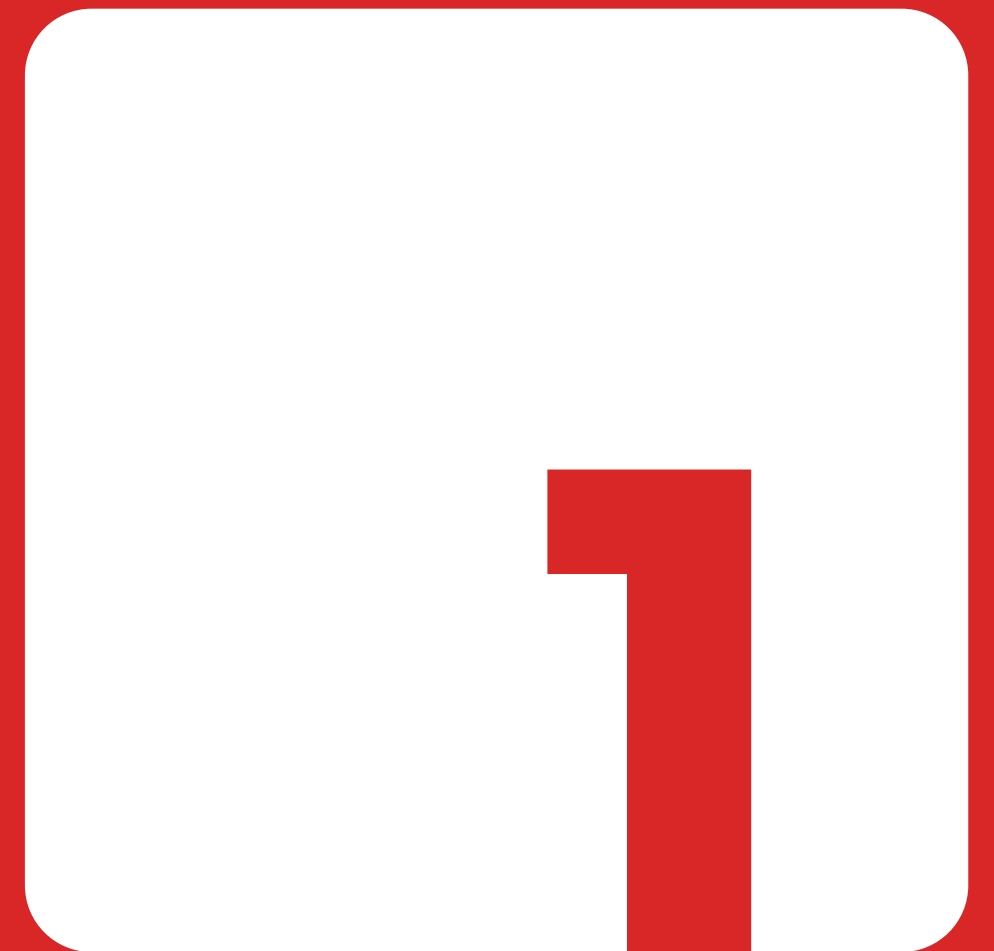
table of contents

1	introduction
4	exhibition brief
6	object list
8	schematic layout
10	scale model
12	floor plan
15	material guide
16	material map
17	exhibit sketch
19	typography
20	exhibit title
21	exhibit timeline
22	exhibit instructions
24	in-situ rendering
25	exhibit rendering



phase one: schematic design

sacramento children's museum



Exhibition Brief

The Sacramento Children's Museum will focus on instilling a desire to learn in children by allowing them to explore and interact with hands-on exhibitions, experiments, and displays. Two main themes throughout the museum will be water and land. Additionally, exhibitions will incorporate local themes such as agriculture, the Sacramento and American rivers, energy conservation, trees, etc.

Our intended audience will be children of all ages, but from 0 to 8 years old in particular, as well as their families. In order to facilitate this young audience, the flooring will be mainly bamboo with areas of sticky grip tape and rubber mats for safety. Additionally, all exhibits will be child-safe, using foam, padding, and rounded corners. Exhibits will all be positioned at approximate kid-eye level, and will be accessible for all, including differently-abled children. The majority of our exhibits will allow children to learn at their own pace, but a few will require the assistance of museum guides and workshop leaders.

Following the theme of land and water, our exhibits and museum signage will all be color coordinated with bright blues and greens. Exhibits will be mostly visual, with additional facts and information posted around. Some exhibits also will have items that the children can take home with them, such as a plant sprout, art project, etc. The museum will also have a workshop area that can accommodate weekly cooking classes, art classes, etc.

venue	Sacramento Children's Museum
dates	permanent
audience	families, children: 0-8 years old, schools
location	Sacramento riverfront
size of space	~18,000 sq. ft.
number of objects	(see list)
retail area	yes
special considerations	audience and focus on learning activities as much as objects, hands-on exhibits, etc.
interpretive elements	educational games, hands-on activities, & informational signage
promotion	brand new museum with graphic identity and publicity
core idea	The Sacramento Children's Museum will focus on instilling a desire to learn in children by allowing them to explore and interact with hands-on exhibitions, experiments, and displays.

Exhibition Brief



- >> Location for the museum set on the Sacramento River waterfront, near Old Sacramento, and as a completely new structure.
- >> Exhibits will focus on a land and or water theme, and will also incorporate sound, recycling, and other subjects.
- >> A workshop space will be available for weekly programs, such as cooking classes, art projects, and more.
- >> The structure will be constructed as a green building, using sustainable materials.
- >> Behind the building will be a garden space, where children can help tend the gardens, pick fruit and vegetables, and generally explore.
- >> The second floor of the museum will have office space on one side, with a sitting-rest area and café on the other side.
- >> An area on the first floor will be set aside for temporary exhibitions, either for traveling exhibitions or seasonal ones.
- >> All major exhibits will have some component that the children can either take with them, or learn more about online through our website.

Object List



REF # 001
WORKING TITLE: Play Port
THEME: water
DIMENSIONS: 330 sq. ft.
OBJECTS: water tubs, pipes, fountains, boats, chutes, lighting, paper towels
DESCRIPTION: an educational water park where children learn about the flow of water, and can manipulate water using pipes, chutes, waterfalls, and more. Colorful boats and rafts will flow along the river paths that the children direct.



REF # 002
WORKING TITLE: California Climates
THEME: water, land
DIMENSIONS: 700 sq. ft.
OBJECTS: air conditioning, tropical plants, humidifier, sand, snow, ice, etc.
DESCRIPTION: will incorporate environment and different forms of water: it will feature a room or hallway with temperature controlled areas separated from each other, showing water in different forms such as ice & snow, rain, condensation, fog, and a dry desert area. Additionally the room would match a California location that features those weather patterns.



REF # 003
WORKING TITLE: Sacramento Wildlife
THEME: water
DIMENSIONS: 500 sq. ft.
OBJECTS: local fish & animals, tanks, river display,
DESCRIPTION: aquariums of local fish and animals with full wall-height glass observational areas. Additional tide pool areas and shallow tanks will allow children to get a closer look, along with hourly interactive times where museum workers can assist children to pet and or hold animals (lizards, frogs, etc.)



REF # 004
WORKING TITLE: City of Trees
THEME: land
DIMENSIONS: 615 sq. ft.
OBJECTS: padded tree structures, treehouse, rock climbing gear, ropes, padded floor, bridges, slides, rope swing
DESCRIPTION: giant padded trees with levels of treehouse-like playground areas will allow children to climb safely and explore while learning about different trees native to the Sacramento area, and why Sacramento is the city of trees. The area can also include a mini ropes course for kids, climbing wall, and swings.



REF # 005
WORKING TITLE: Gold Rush
THEME: land, water
DIMENSIONS: 200 sq. ft.
OBJECTS: river bed, rocks, "gold," pans
DESCRIPTION: an area where children can learn about the gold rush history of sacramento while experiencing panning for gold first hand



REF # 006
WORKING TITLE: Mini Aggies
THEME: land
DIMENSIONS: 320 sq. ft.
OBJECTS: garden, plants, vegetables, fruits, garden tools, dirt, cups, sprouts, cooking space
DESCRIPTION: an outdoor gardening space will be established along the water front, along with a side exhibition where children can learn about planting and gardening, plant their own sprouts, and harvest vegetables. A workshop area will allow for a weekly children's cooking class, using local produce.

Object List



REF # 007
WORKING TITLE: Jr. Fire Fighters
THEME: water/land
DIMENSIONS: 100 sq. ft.
OBJECTS: water cannons, "fire", burnt crops
DESCRIPTION: similar to the carnival game where children hit a target with a water cannon, except with educational and practical information on how wildfires affect our community, agriculture, and how fire fighters respond to these emergencies

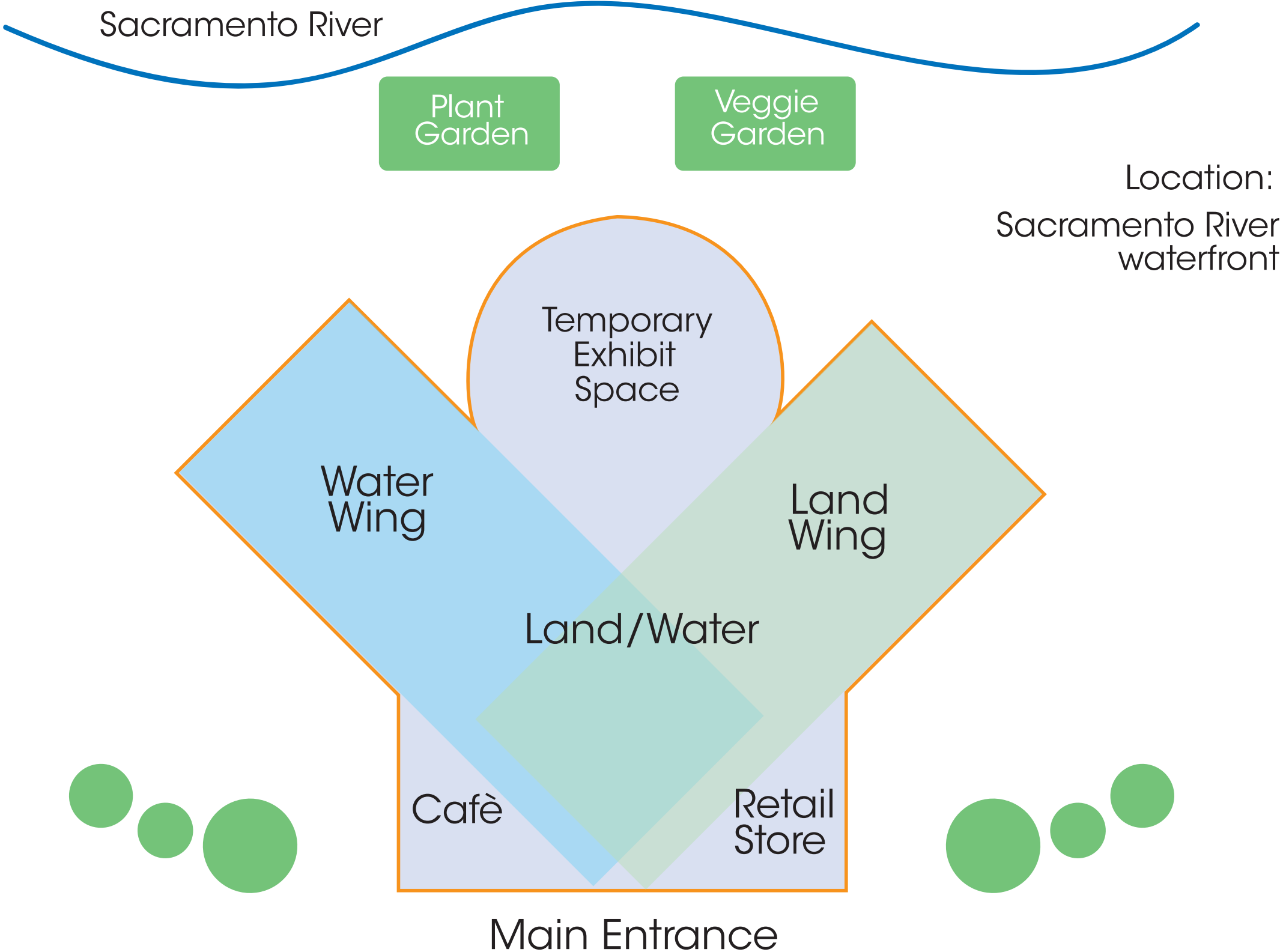


REF # 008
WORKING TITLE: Archeological Treasure Hunt
THEME: land
DIMENSIONS: 200 sq. ft.
OBJECTS: sand pit, "bones" and other artifacts, brushes, shovels, sifters
DESCRIPTION: one half of the pit will allow children to just play around in the sand, move sand with mini-trucks and possibly build sand castles; the other half will be geared towards older children and will teach about how archeologists work in discovering ancient artifacts



REF # 009
WORKING TITLE: Currents
THEME: water
DIMENSIONS: 150 sq. ft.
OBJECTS: bungee cords of differing strengths, harness, foam padded flooring
DESCRIPTION: an exhibit teaching children about different strengths of water currents through hands-on means: by tying them to the bungee cord that is attached to the wall and encouraging them to walk. It will show varying strengths from streams to rivers, while teaching about the ecosystem in the river

Museum Schematic



phase two: concept design
sacramento children's museum

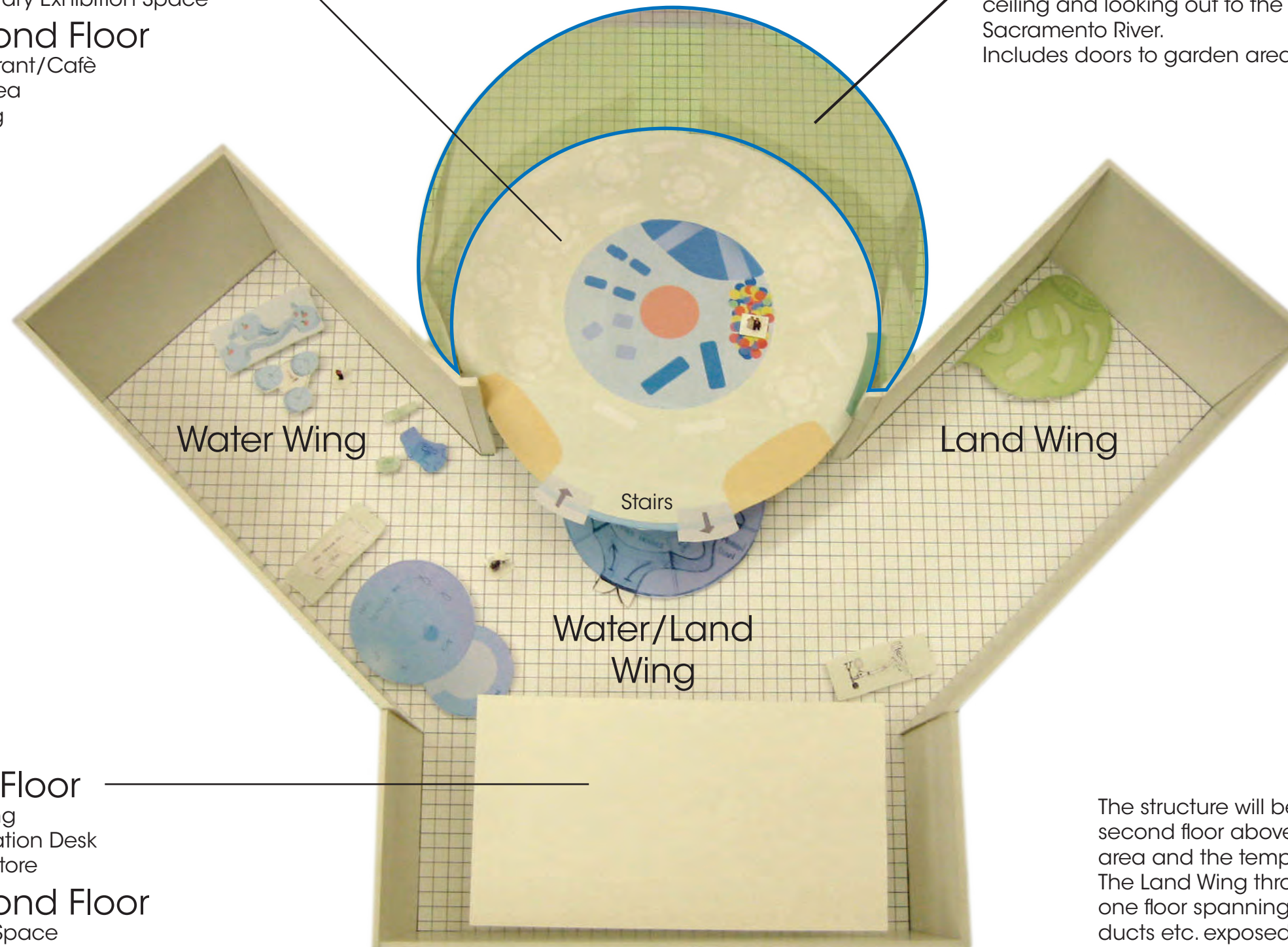


Top View of Scale Model

Model built to 1 cm = 2 ft scale.

First Floor
Temporary Exhibition Space
Second Floor
Restaurant/Cafè
Play Area
Seating

Glass spanning from ground to ceiling and looking out to the Sacramento River.
Includes doors to garden area.



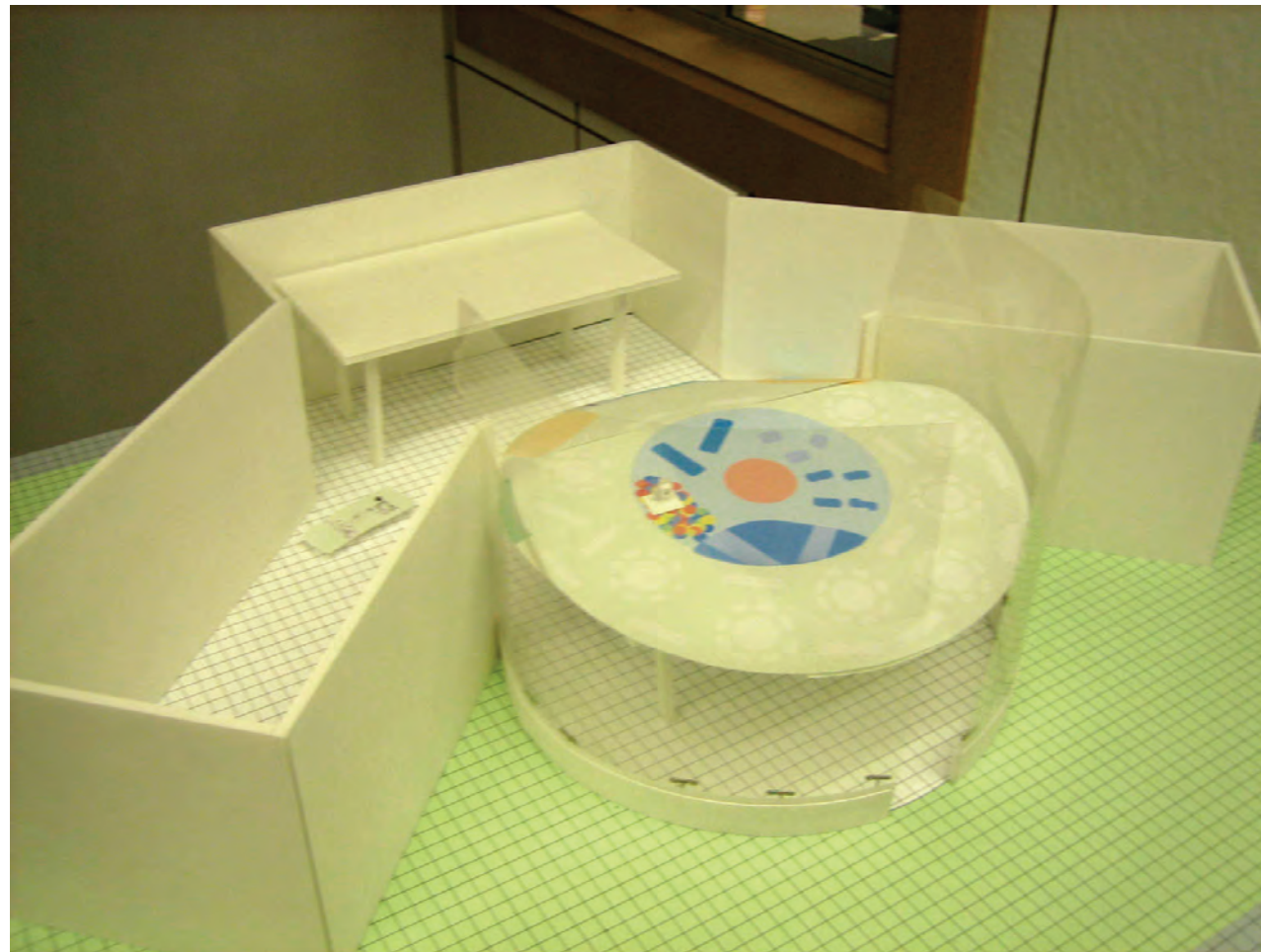
First Floor
Ticketing
Information Desk
Retail Store
Second Floor
Office Space

The structure will be 30 feet high. There will be a second floor above the main entrance/ticketing area and the temporary exhibition space only. The Land Wing through the Water Wing will be one floor spanning the entire 30 feet with air ducts etc. exposed but painted.

Main Entrance

Images of Scale Model

Model built to 1 cm = 2 ft scale.



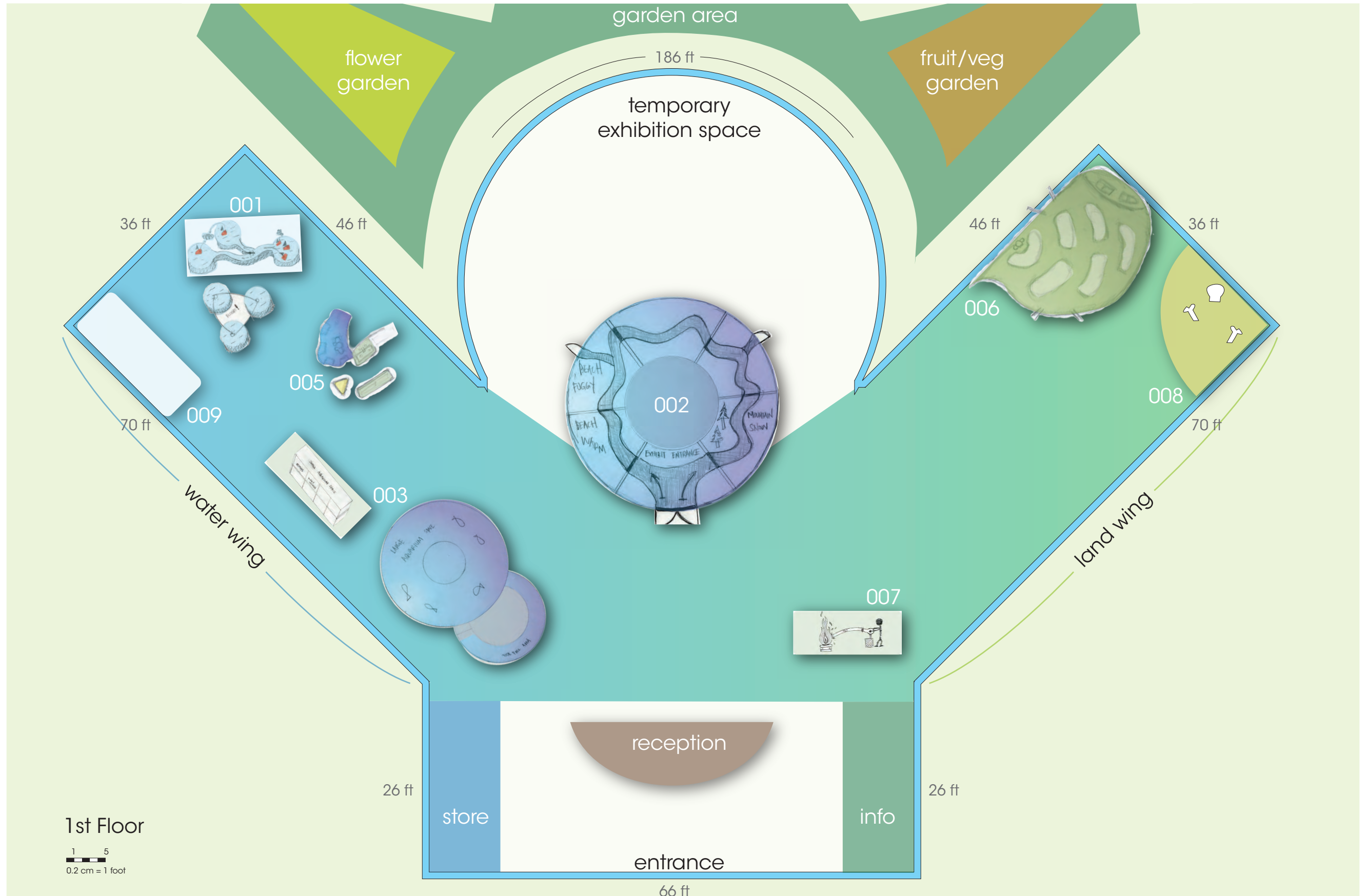
General Overview

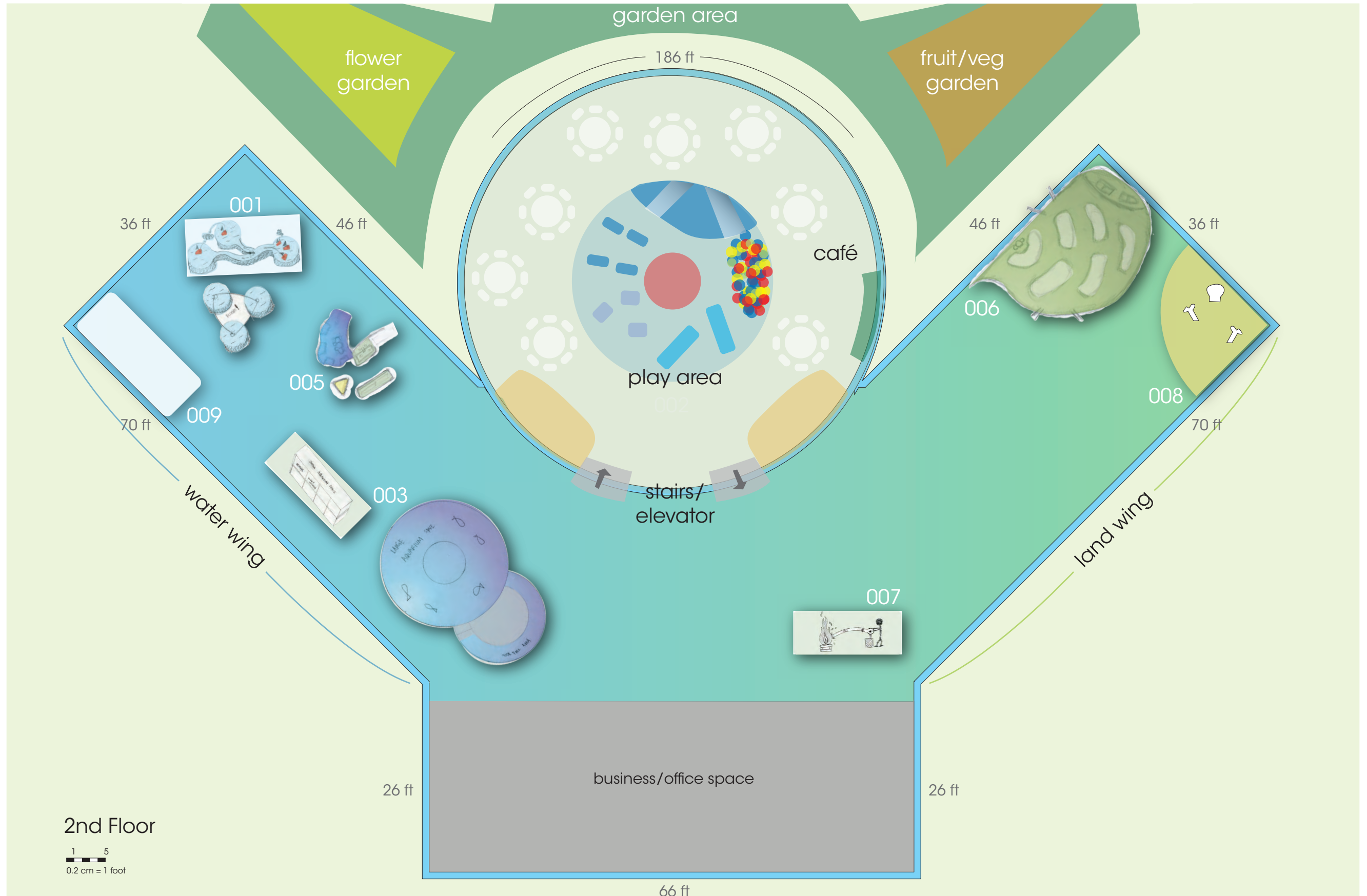


Looking toward the Water Wing



Looking toward the Land Wing





2nd Floor

1 5
0.2 cm = 1 foot

phase three: 3d detail design

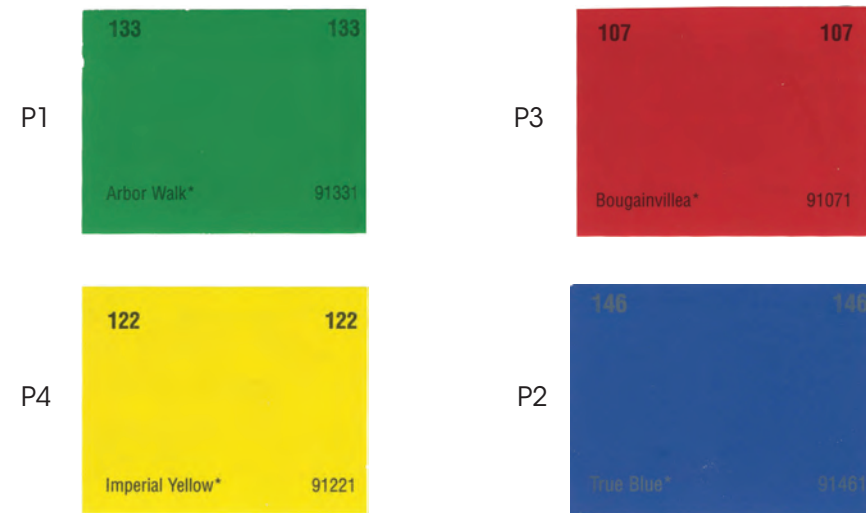
sacramento children's museum



3

Materials & Colors List

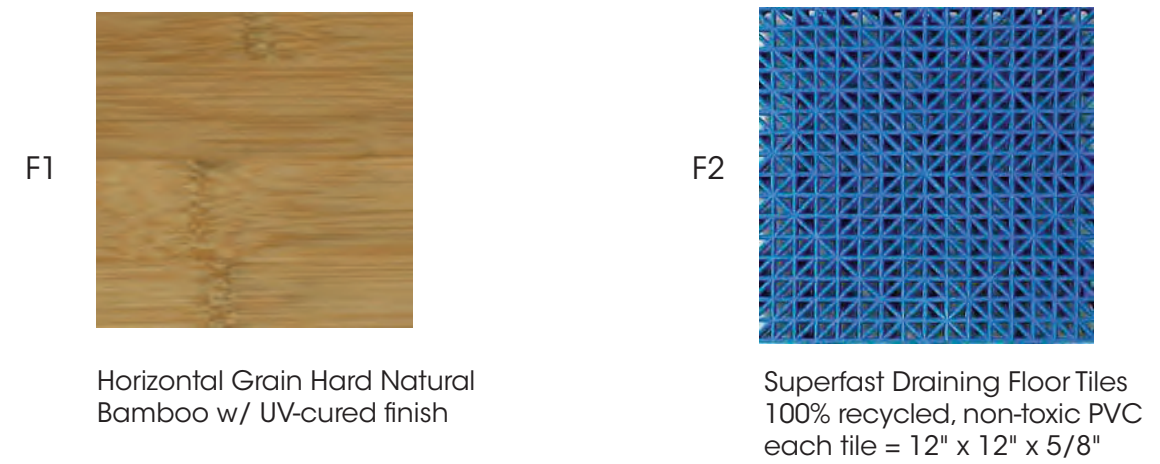
Boat/Cargo Colors The various cargo will be the following colors.



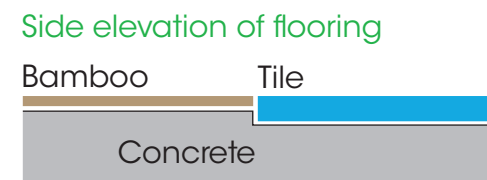
Wall Colors Colors to be used for the Water and Land Wings



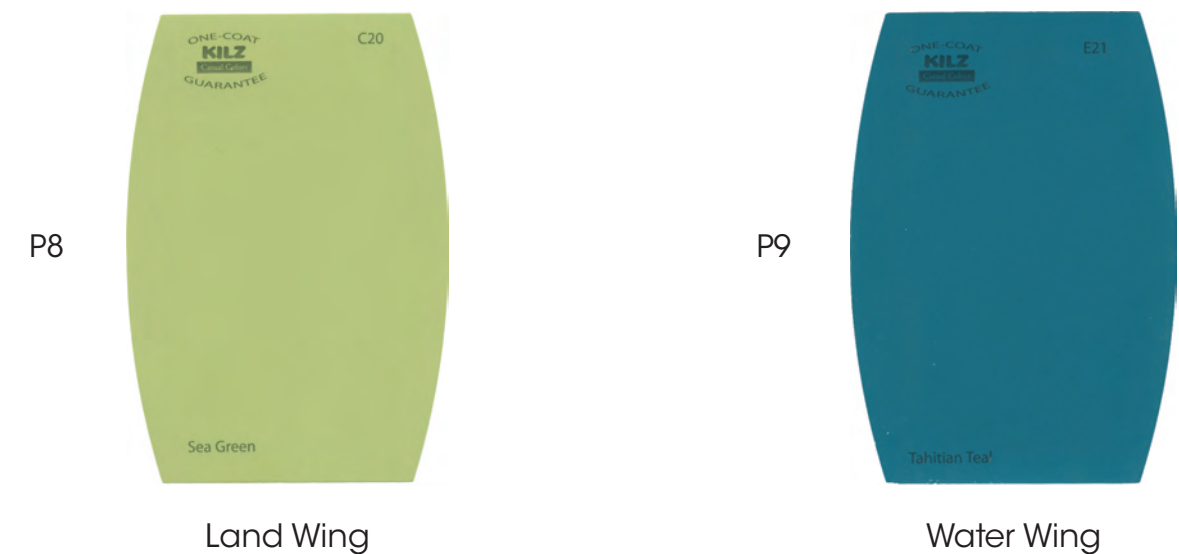
Flooring Flooring up to the "port play" stations will be bamboo. At that point, the cement will fall below the level of the bamboo flooring. That area will consist of draining floor tiles placed in the recessed cement. There will also be a drain to account for any spilled water.

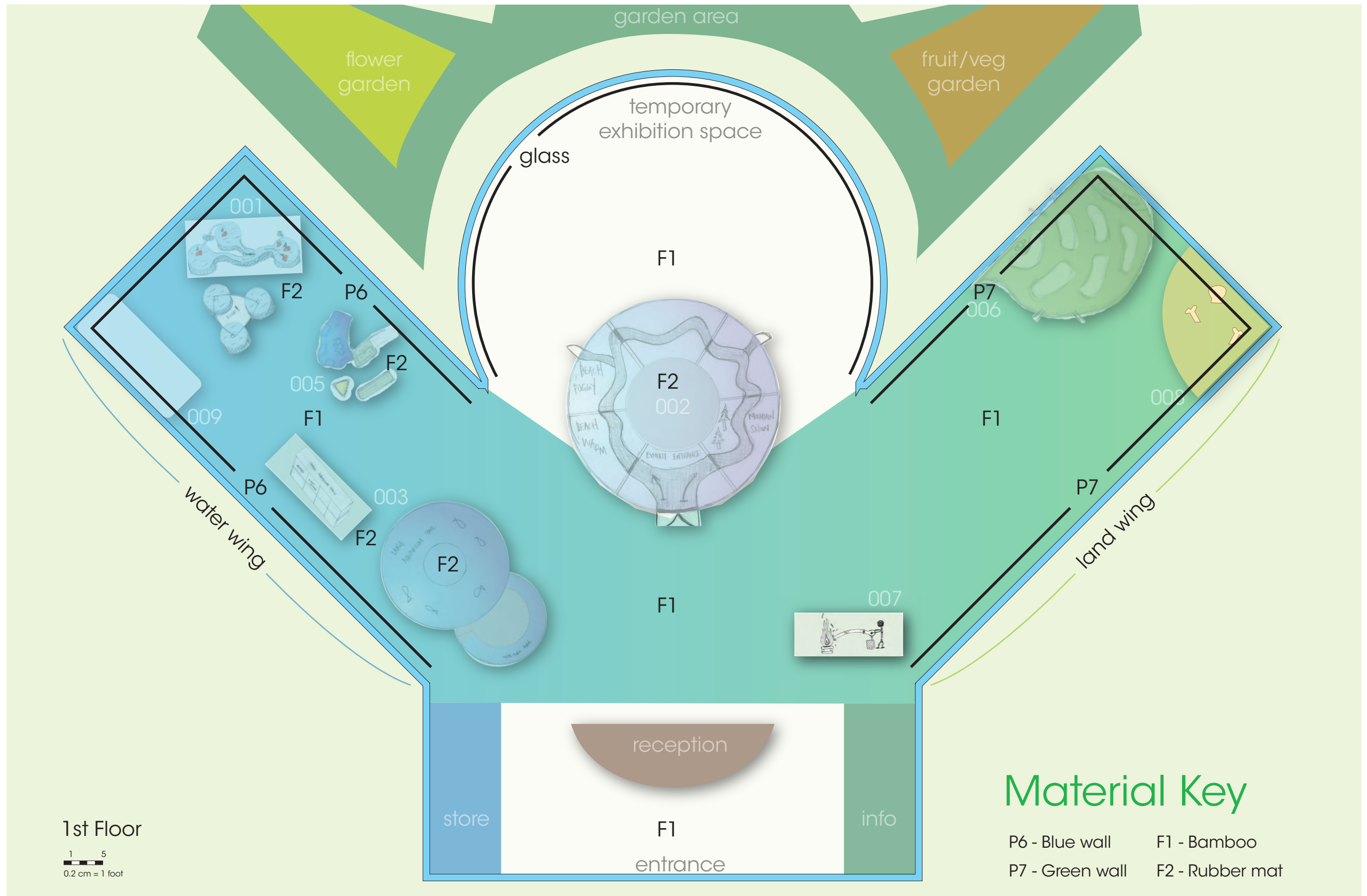


Bamboo is a green alternative to other hardwoods with the hardness of oak.
The UV-cure finish will prevent outgassing of volatile organic compounds (VOCs)



Accent Colors Colors to be used as exhibit colors for use on graphics, title wall, etc.





1st Floor
1 5
0.2 cm = 1 foot

Material Key
P6 - Blue wall F1 - Bamboo
P7 - Green wall F2 - Rubber mat



phase four: 2d detail design

sacramento children's museum



4

Typographic Sample

Font choice: ITC Avant Garde Gothic

In deciding on a type face for the museum graphics and signage, we researched typography for children to start with. Two sources in particular were useful, www.kidstypography.org and an article on www.fonts.com. Both stated that in choosing a typeface, children favored fonts with higher x-heights and more open counters for legibility. We settled on Avant Garde, as it met these specifications and also looked simple and modern. Although the articles mentioned there was no considerable difference between children preferring serif to sans serif fonts, we decided to just mainly use a sans serif, since the letterforms appear to be cleaner.

In regards to the type treatment, we decided to use slightly increased letter spacing as well as generous leading for areas with a lot of text. Throughout our exhibition signs, however, we attempted to limit our text to only what was necessary to convey whatever information we needed.

Sample:

Aa Bb Cc Dd Ee Ff Gg Hh Ii Jj Kk Ll Mm
Nn Oo Pp Qq Rr Ss Tt Uu Vv Ww Xx Yy Zz
0 1 2 3 4 5 6 7 8 9
Sacramento Children's Museum

Aa Bb Cc Dd Ee Ff Gg Hh Ii Jj
Kk Ll Mm Nn Oo Pp Qq Rr Ss Tt
Uu Vv Ww Xx Yy Zz
0 1 2 3 4 5 6 7 8 9
Sacramento Children's Museum

**Aa Bb Cc Dd Ee Ff Gg Hh Ii Jj
Kk Ll Mm Nn Oo Pp Qq Rr Ss Tt
Uu Vv Ww Xx Yy Zz
0 1 2 3 4 5 6 7 8 9
Sacramento Children's Museum**

Exhibition Title

Located on the wall behind the exhibit.



play port

Ahoy Mateys!

Welcome to the **Play Port of Sacramento**, where you can be a scurvy river cap'n! Race to load and deliver as much cargo as possible to their matching docks. Watch out for tumbling waterfalls and slippery water slides!

painted onto the hull

printed with vinyl lettering on a metal ship hull

Exhibit Timeline

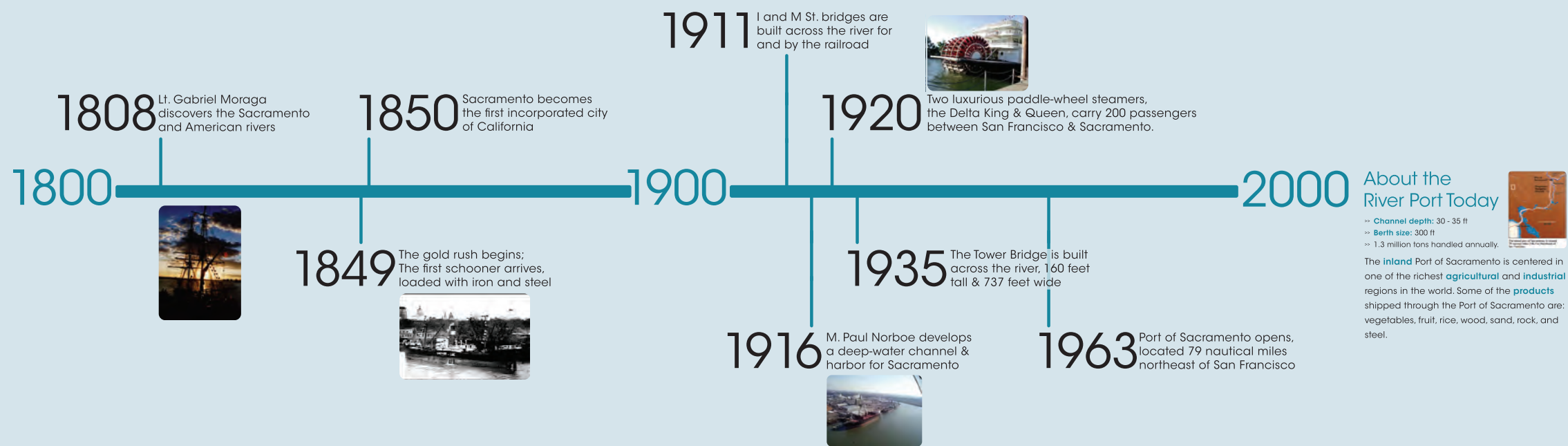


Exhibit Instructions

These instructions will be at each corresponding station

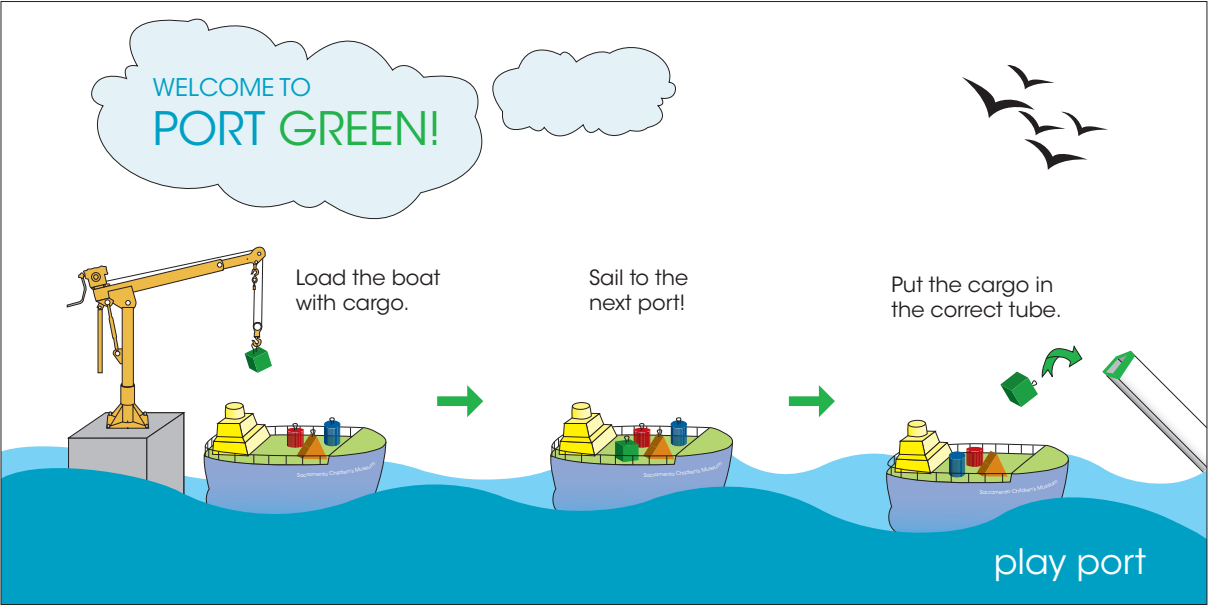
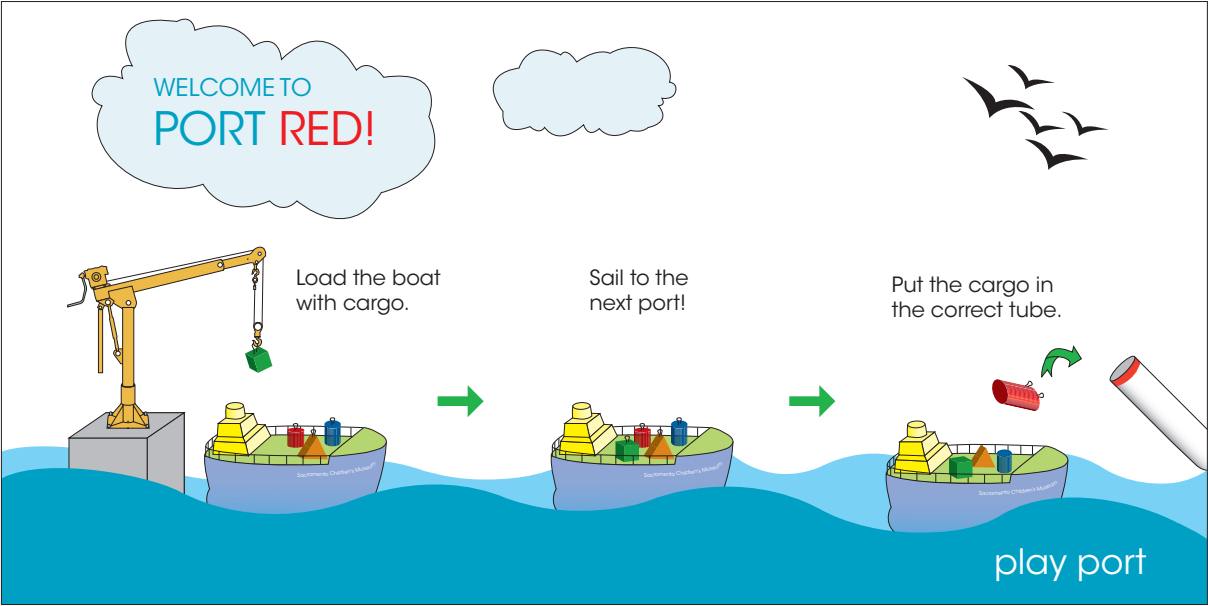
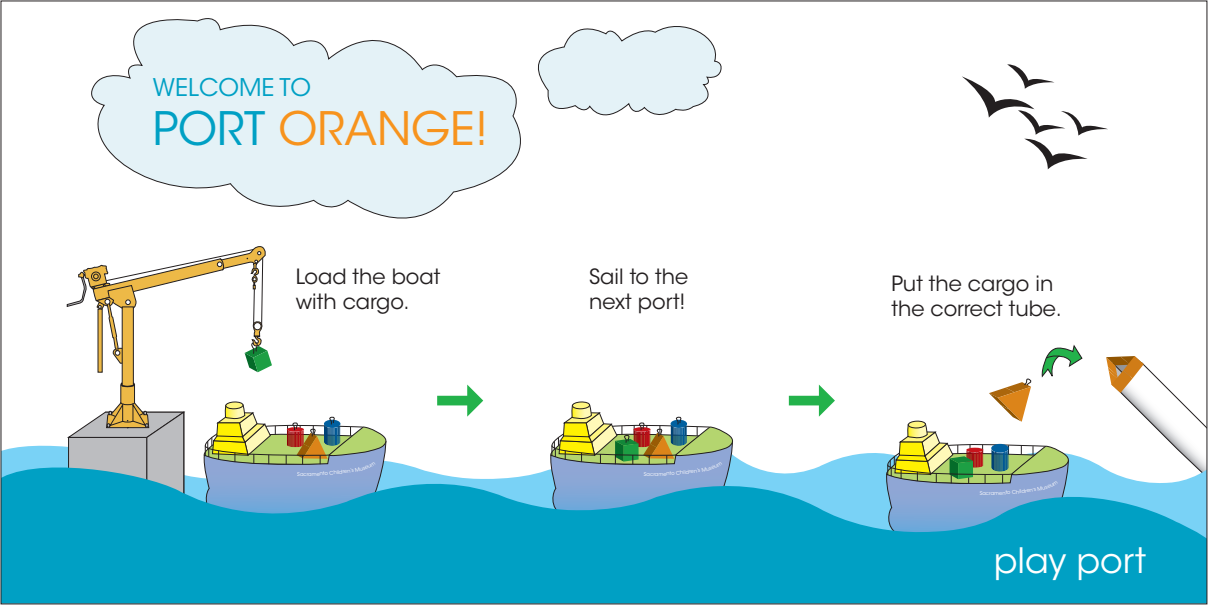
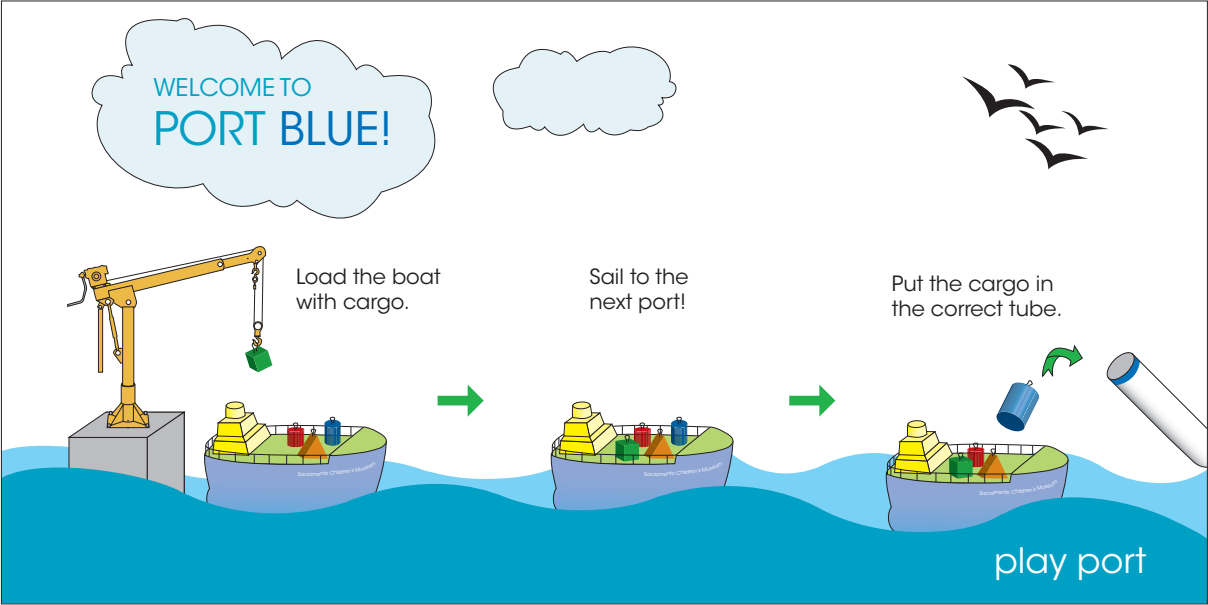
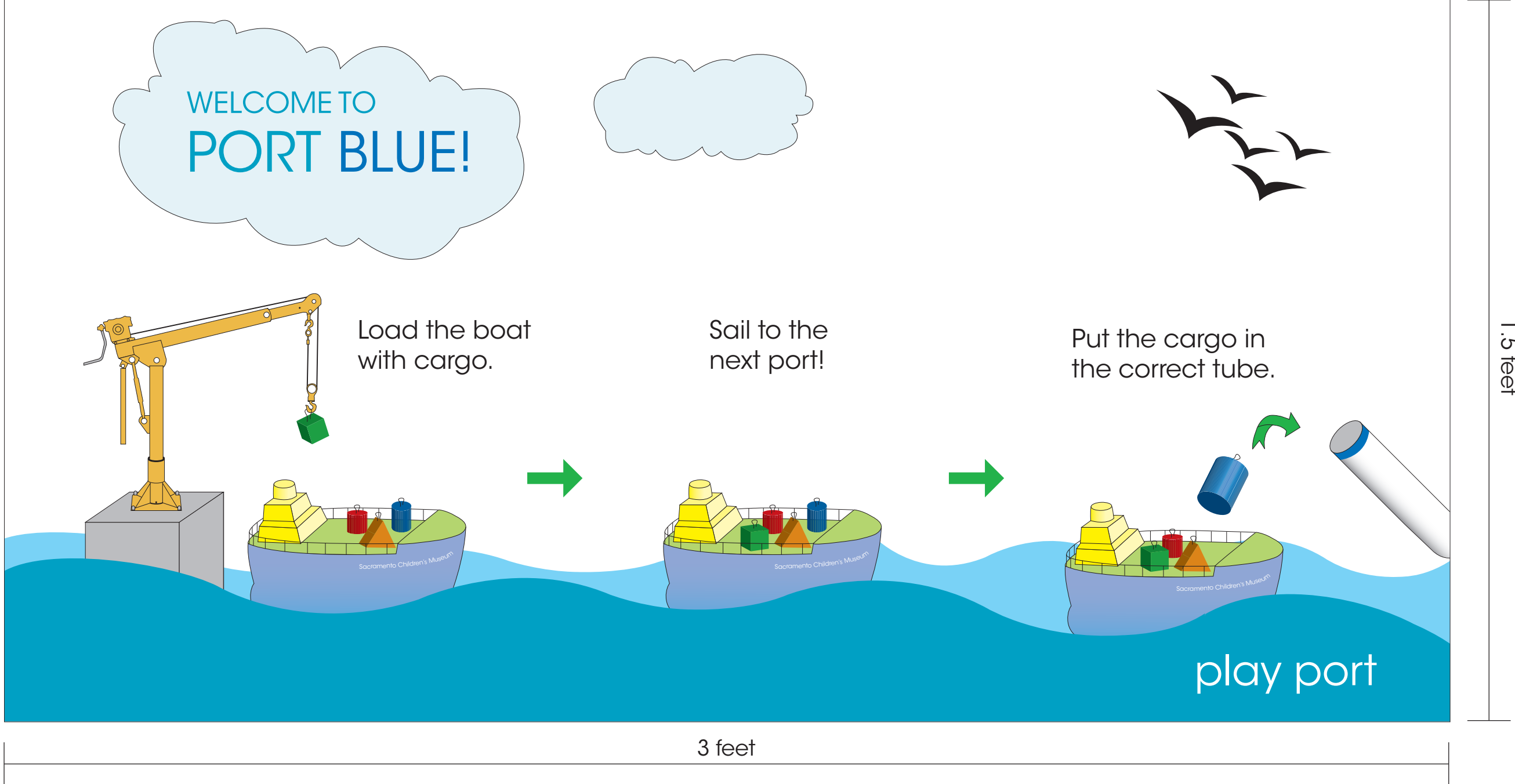


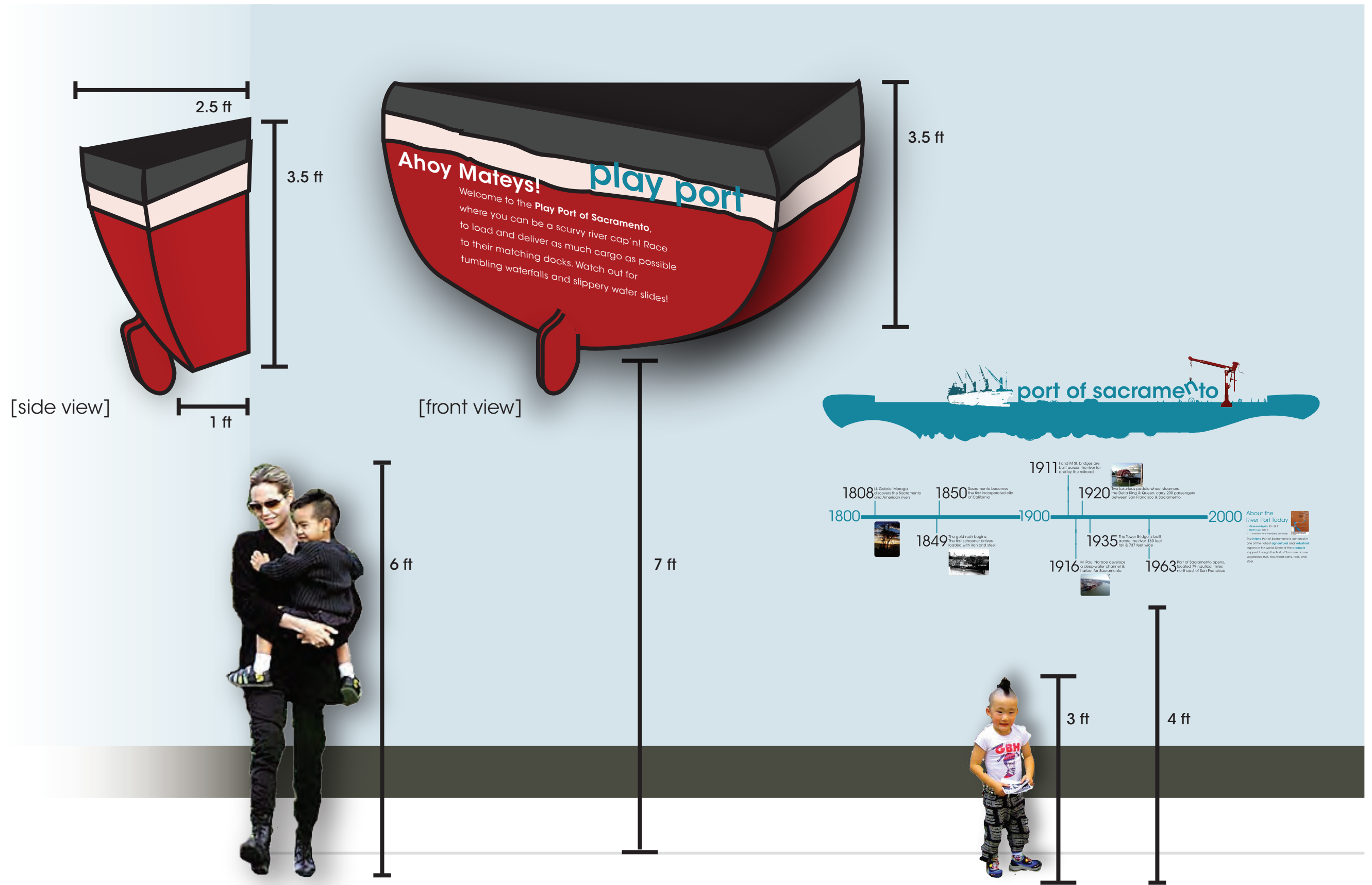
Exhibit Instructions

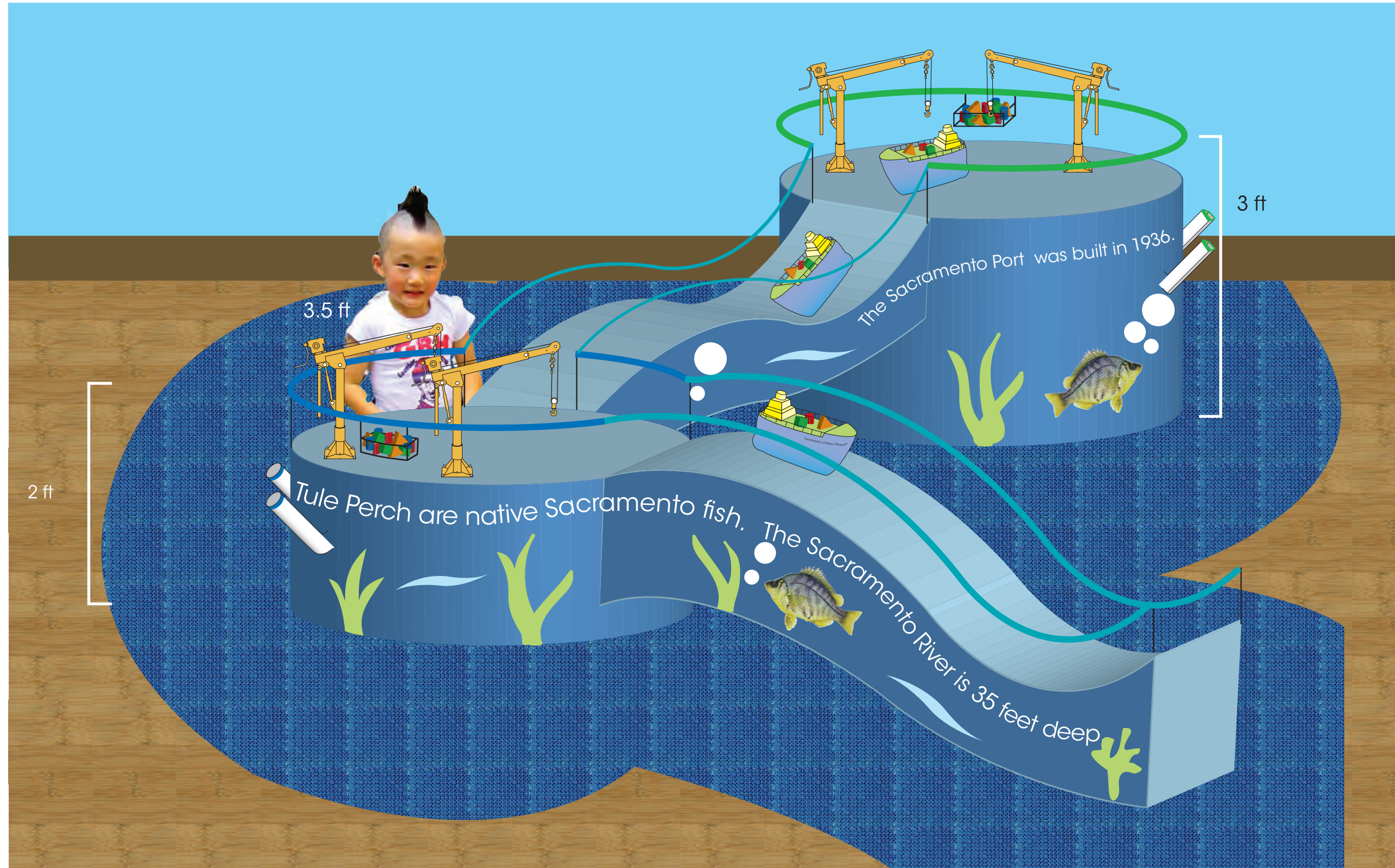
Scaled image of instructions at each station; actual size is 3 ft x 1.5 ft



Exhibition Wall

In-situ example of wall graphics.





Station Detail

Rendering of a section of the "port play" exhibit.

3 cm = 2 ft

trish ang
pgang@ucdavis.edu

stella hong
shhong@ucdavis.edu

