

Rowntree Walk



Loading.....

Rowntrees



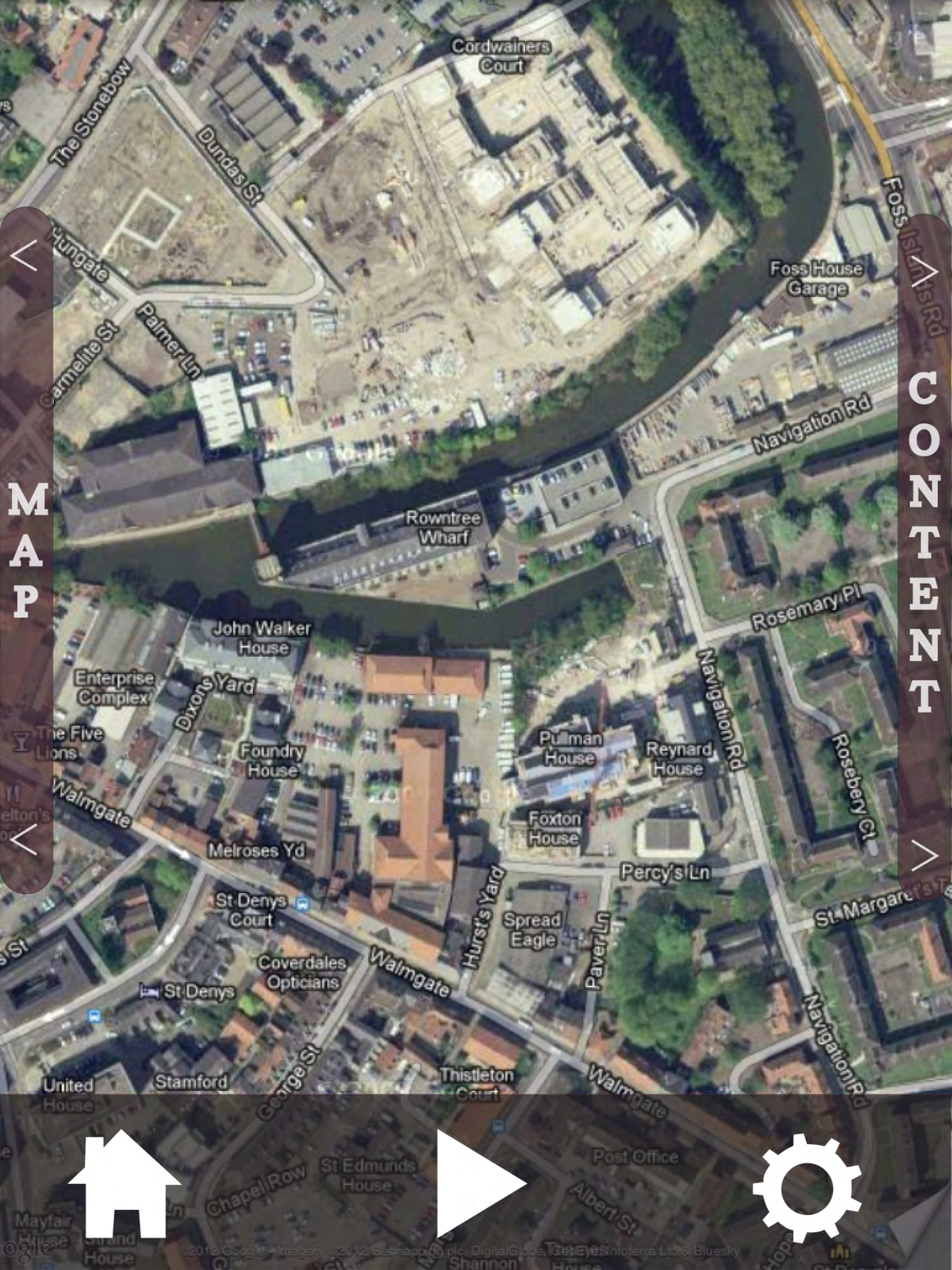
Enough with the vikings. Enough with the Romans, and lets get to the important stuff, candy, and more specifically the Rowntree legacy. With York comes a rich history accredited to Joseph Rowntree and his works that can be considered the invisible force that helped build modern day York

The Rowntrees Walk

Welcome to the Rowntree walking tour, a guided tour of the most historic Rowntree sites in York.

[Start Tour](#)

[Visit Website](#)



Cordwainers Court

The Stonebow

Dundas St

Foss House Garage

Foss Islands Rd

Navigation Rd

Rowntree Wharf

John Walker House

Enterprise Complex

Dixon's Yard

Foundry House

Pullman House

Reynard House

Rosemary Pl

Rosebery Ct

Walmgate

Melroses Yd

Foxton House

Percy's Ln

St Denys Court

Spread Eagle

St. Margaret's T

Coverdales Opticians

Walmgate

Hurst's Yard

Paver Ln

Navigation Rd

United House

Stamford

Thistleton Court

Walmgate

Post Office

St Edmunds House

Chapel Row

Albert St



MAP

CONTENT



Rowntree Walk



York Shambles

DIG

Rowntree Wharf

This imposing building was originally part of Leatham's Flour Mill. Towering above the river Foss, it dominated the slum district of Hungate. In 1955 it became Rowntree & Co.'s Navigation Warehouse. In 1989 it was converted into flats and offices by the Joseph Rowntree Foundation.

Merchant Adventure's Hall

York Castle Museum



Cordwainers Court

Foss House Garage

Navigation Rd

Rowntree Wharf

John Walker House

Enterprise Complex

Dixons Yard

Foundry House

Pullman House

Reynard House

Foxton House

Melroses Yd

St Denys Court

Coverdales Opticians

St Denys

United House

Stamford

Thistleton Court

Spread Eagle

Hurst's Yard

Percy's Ln

Paver Ln

Walmgate

Navigation Rd

Rosemary Pl

Rosebery Ct

St Margaret

Navigation Rd

Walmgate

Post Office

St Edmunds House

Albert St

The Stonebow

Dundas St

Hungate

Carmelite St

Palmer Ln

Foss Island Rd

CONTENT

MAP



Rowntrees Wharf

From Poverty to Prosperity:



Welcome,

I see you've arrived at the wharf, have a look around. Rowntree Wharf once overlooked the slums of 19th century York. In 1935 the site became the Rowntree and Co.'s Navigation Warehouse. Over here you can see that the warehouse overlooks the river Foss. This river would get shipments of cocoa beans, Arabic gum, and thousands of other ingredients right up to the hull docks. These ingredients were used to make some of our favorite Rowntree treats like smarties and Kit- Kats.

Rowntrees Wharf

From Poverty to Prosperity:



Social Reform:

During the 20th century Seebohm Rowntree published one of his classic texts of sociology titled *Poverty*. This piece inspired decades of social reform based on his concepts of a poverty line and determining the circular nature of financial hardship. The Hungate district was one of the many 20th century slums of York; Seebohm Rowntree's book gave a voice to the nearly 20% of the population living in poverty.

Rowntrees Wharf

From Poverty to Prosperity:



Architecture:

Designed by Walter Penty, Rowntree Wharf was once the site of the world's largest flour mill under Henry Leetham's family flour business until 1930. In 1989 the location was converted into flats and office space by the John Rowntree Foundation. Today the area is also the site for archaeological excavation.