

HULLABALOO!

Experience Davis Through Interactivity and Sound



Interactivity and sound enlivens the new Davis City Hall. The space aims to spark curiosities to CARE about sustainability, INSPIRE the community, and CREATE local economy.

Interactivity encourages learning, as visitors can interact with the exhibits and interpretive signage.

Sound energizes, as a sound-producing Rube Goldberg machine runs along the corridor, connecting both light wells.

SITE EVALUATION

DEPARTMENT LOCATION

City Hall has 3 main space catering to different audiences:

- CARE** Parks & Recreation - Families
- INSPIRE** Corridor - General Public
- CREATE** Finance & Permits - Business members

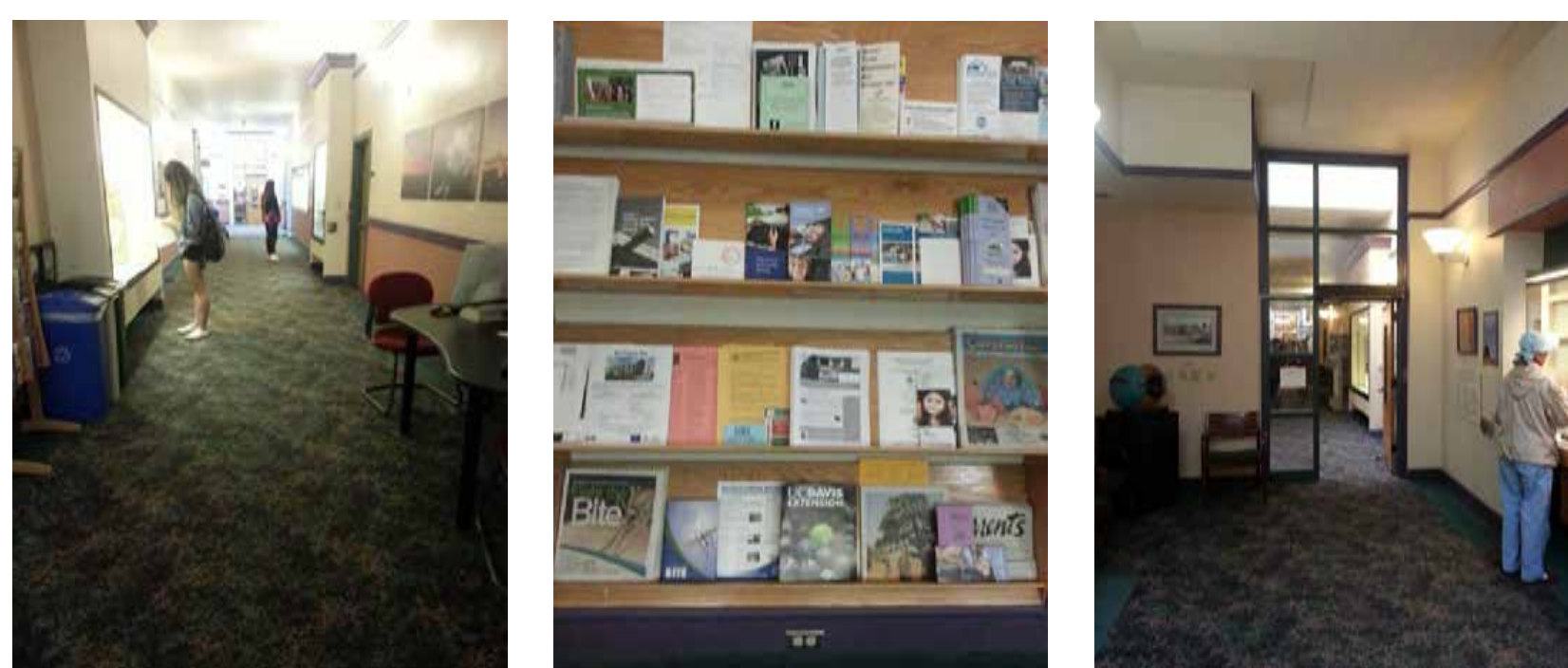
The audience in each space drives the space allocation in the new plan.

ACCESSIBILITY TO INFO

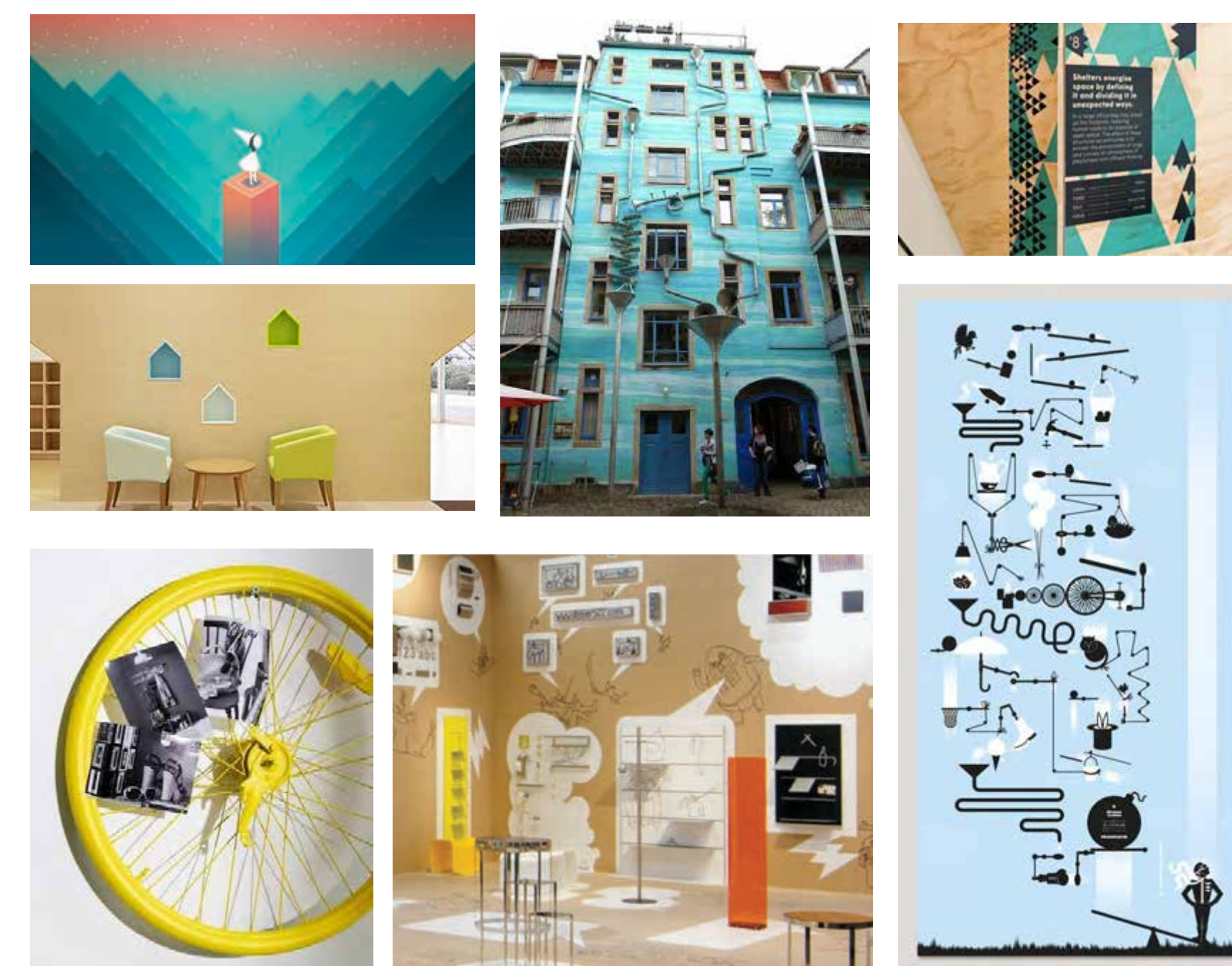
Cluttered information and brochures make it difficult for guests to filter and find the information they need.

LIGHT WELLS

The light wells are currently underutilized. The new plans aim to bring life into the light wells, where the grand Rube Goldberg-inspired machine will be housed.

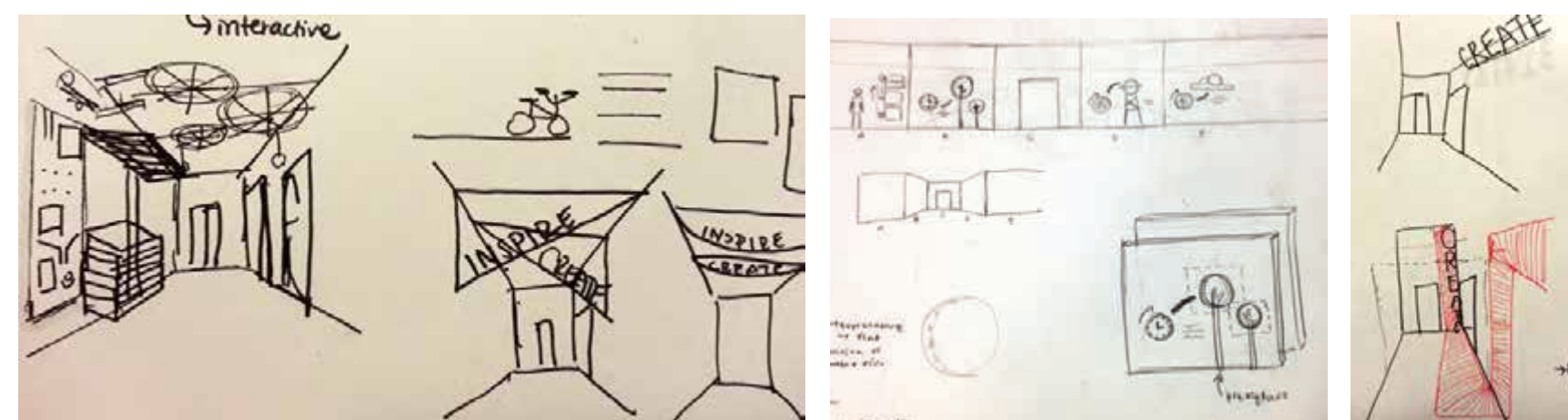


LOOKBOOK



Davis' value in sustainability is reflected within the city, from upcycled art to bikes crafted from salvaged parts. The City Hall should reflect the Davis maker community. Rube Goldberg machines represent how individual machinery parts can work together to form one grand unit, how each Davis individual has the capability of sparking widespread change.

PRELIMINARY SKETCHES



Preliminary sketched explored multiple ways the City Hall corridor could be separated. First through physical barriers then colors, shapes, and themes.

AUDIENCE



The Nelson family of four is new to the Davis community. Joanna and Joe want to find outdoor activities that include both their young ones, particularly interested in the Parks and Recreation Department



Bob is married and works for Finance and Permits office. His office space can feel drab on long days and wish there was a way to enliven the City Hall space. Bob is not as familiar with sustainability, but is willing to learn.



Cathy is an international UC Davis student who wanders to the City Hall one day by chance. She would love to learn how she can volunteer in the community and give back.



Tiffany is a new business owner of Brainy Boutique, an educational toy store. Her purpose is to obtain a permit and get advice on how to market her business and interact with the Davis community.

FORM, PALETTE, MATERIALS

Superclarendon Bold

ABCDEFGHIJKLMNOPQRSTUVWXYZ
abcdefghijklmnopqrstuvwxyz
0123456789

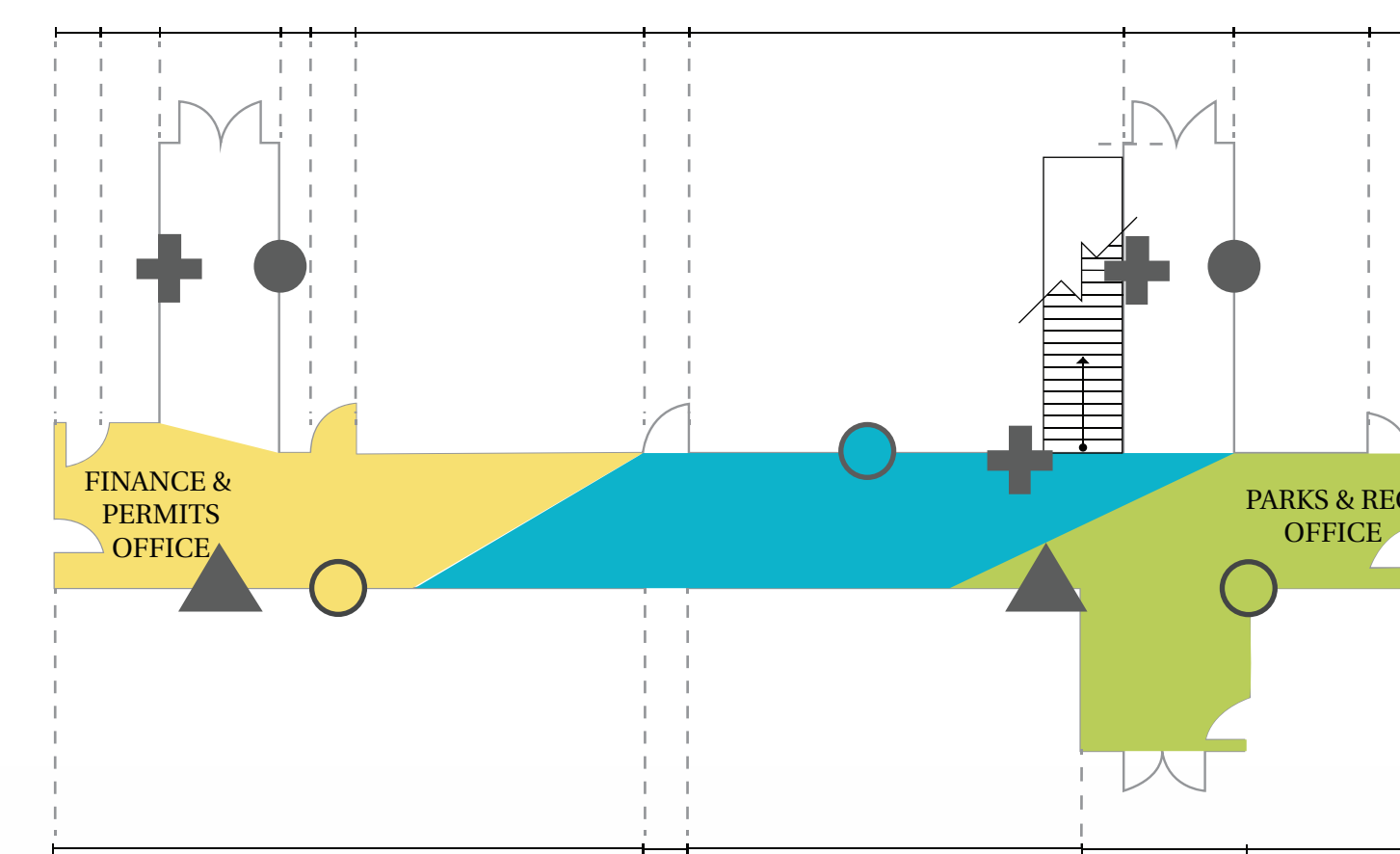
Heuristica Regular

ABCDEFGHIJKLMNOPQRSTUVWXYZ
abcdefghijklmnopqrstuvwxyz
0123456789

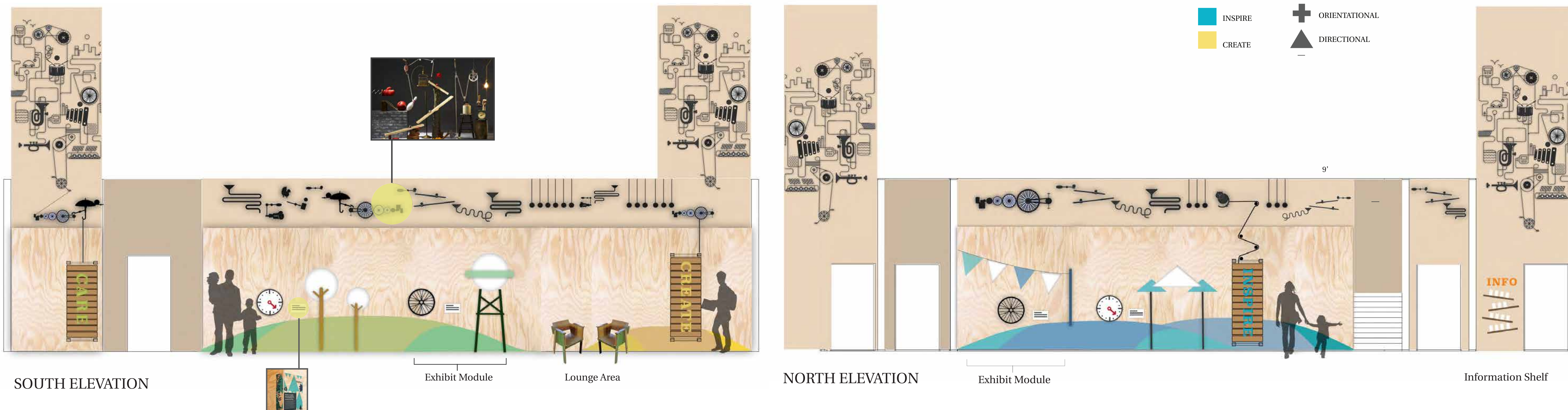
Superclarendon Bold is used for the large interpretative signage for CARE, INSPIRE, CREATE. Heuristica Regular is used for body text because of its friendly form.



SIGN LOCATION

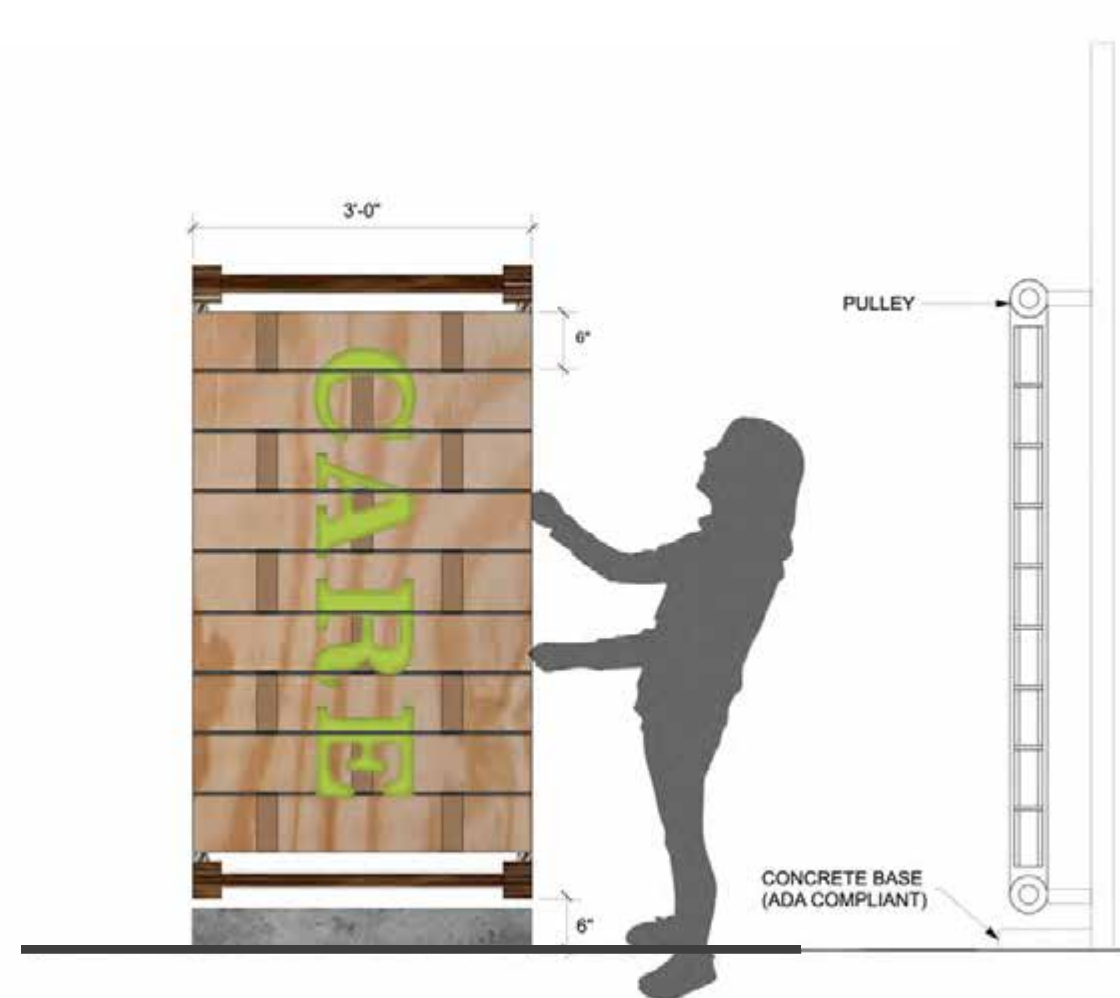
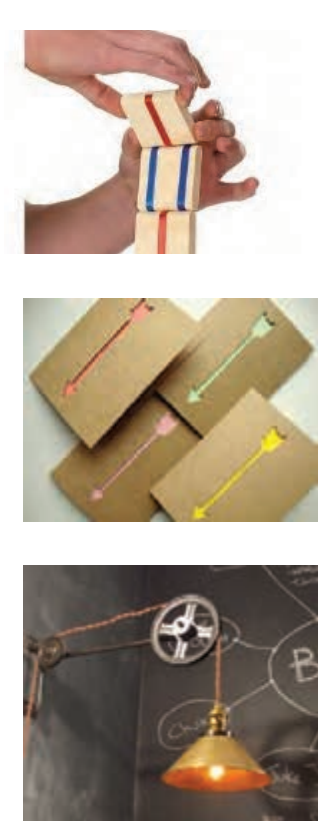


- | | |
|---------------|-------------------|
| SPACES | SIGN TYPES |
| CARE | ○ INTERPRETIVE |
| INSPIRE | ⊕ ORIENTATIONAL |
| CREATE | ▲ DIRECTIONAL |



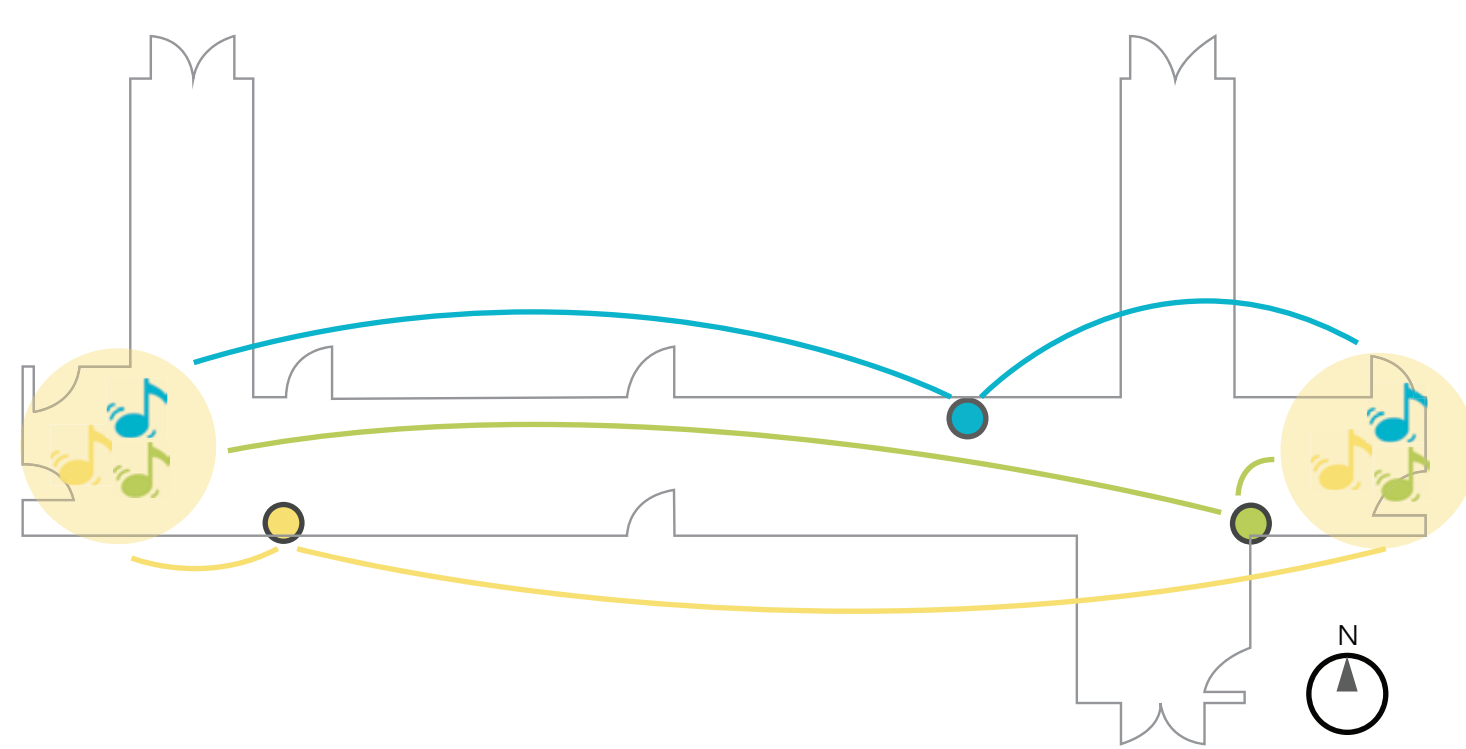
INTERPRETIVE SIGNAGE

EXHIBIT MODULE



CARE, INSPIRE, and CREATE each of their own interpretative signs. They are modeled to be human-sized Jacob's ladder toys. Each sign flips to reveal more information on its other side.

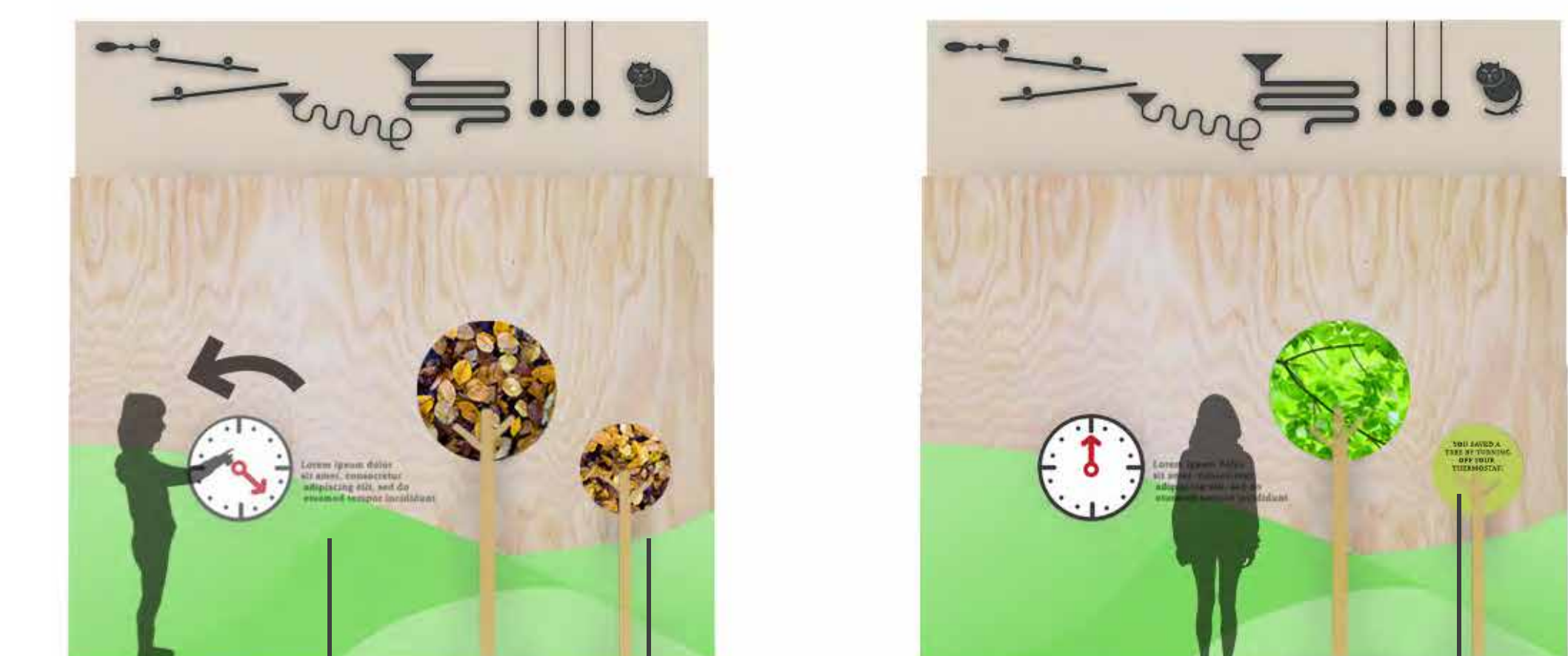
Every sign sets off a part of the Rube Goldberg machine with its own unique sound. When visitors interact with all three signs, a song fills up the light wells for a spectacular experience.



Each Interpretive Sign is activated by the pulley and triggers a reaction in the Rube Goldberg Machine.

To encourage interaction with all signs, sounds produced by each sign come together to form a song in the light wells.

Example of CARE Exhibit



Visitor can adjust dial to turn off the thermostat

Screen shows changes from brown leaves to green

Fact shows: "Turning off your A/C and heater during off-hours saved you from running a mile"

Each exhibit relates to the section it is in. The exhibits teaches the visitor how their own actions can affect sustainability, community, and local economy.