



Western Cooling Efficiency Center

Affiliate Exhibit Space

Chris Wang
Courtney Farmer

Table of Contents

01	Research
02	Concept Design
03	Display Furniture
04	Spacial Organization
05	In-Situ

Research

Overview

The Western Cooling Efficiency Center moved into their current building in Dec 2007 after becoming established in April 2007. The center functions as a place of research and development and a central point of contact with its affiliates. There is a need for an overall design of the central space and a modular system that will allow the center to display products and new technology but also adapt to the various functions of the space. The center's philosophy is rooted in questioning current standards of cooling and entering a new paradigm of thinking about cooling including factors of sustainability and decrease in financial costs.

Goals

- Design display furniture to exhibit new products
- Create a flexible and mobile system
- Reference the function of the WCEC
- Versatility to display small to larger items
- Adaptable over time to suit changing needs
- Easily transported to other locations

Challenge

The center accommodates various functions within the central area. From general reception to facilitating meetings to hosting classes or affiliates, the space is constantly changing. The design of the space must cater to the versatile functions of the space. In addition as a research organization keeping costs low are imperative.

Target Audience

The target audience includes the general public, University of California associates, affiliates and individuals involved, interested or have some previous knowledge regarding cooling efficiency.

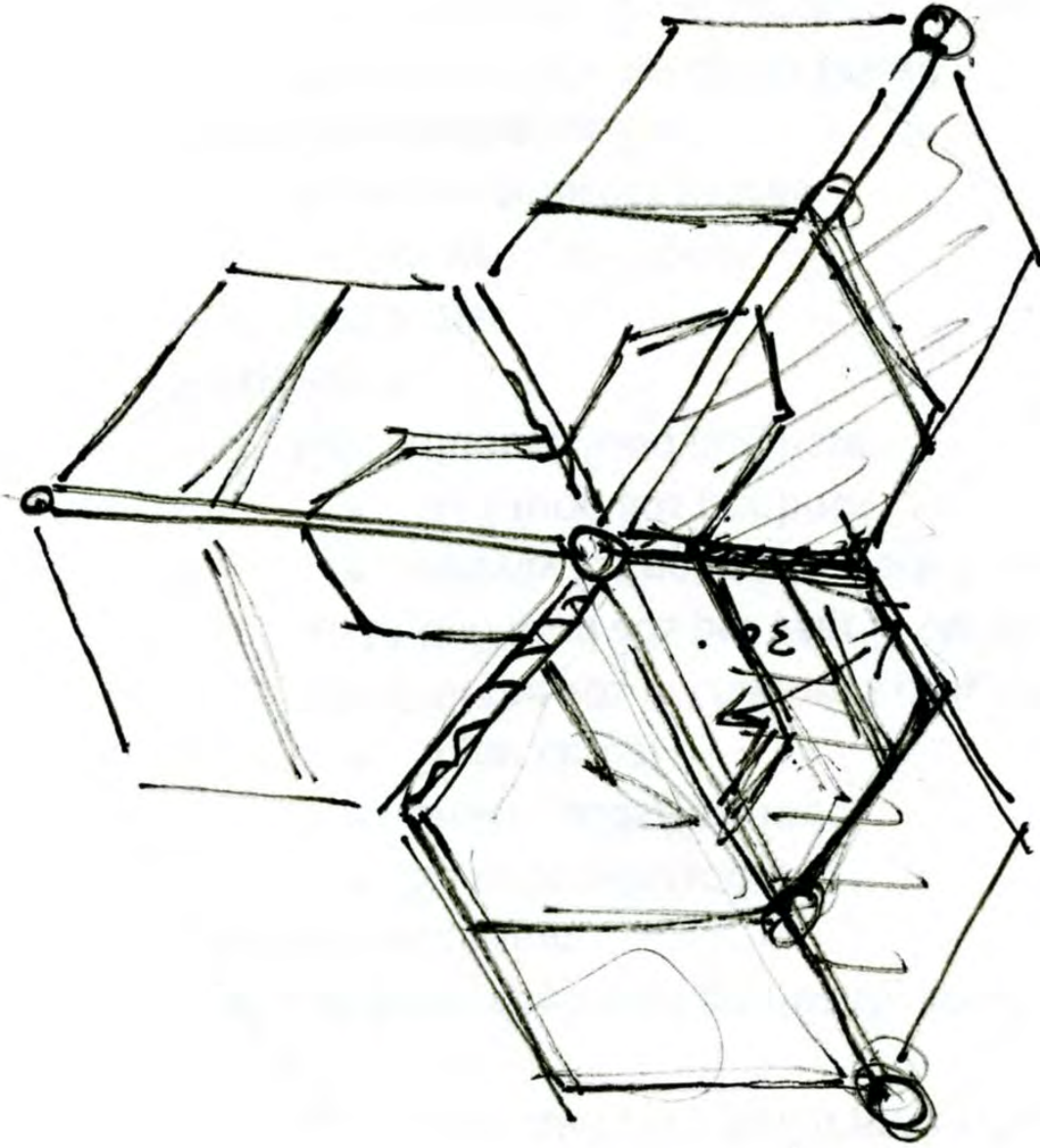


Concept Design

Overview

Inspired by cooling unit vents, fan blades and the movement of air, the basic design of the panels emulates the designs of different types of cooling systems. The furniture allows one to adapt the pieces to new products and effectively engage the viewer while not distracting them from the item being displayed. The modular furniture allows the center to adapt the furniture to suit the needs of their changing exhibits. The individual panels can be combined in various configurations. The thin panels minimize visual impact but also create a blank canvas to highlight the affiliates' products. Additionally they will be lightweight, durable and easily broken down into individual panels for easy transport. The inserts will be able to slide into the panels to create shelves at various heights.

Sketches



Display Furniture

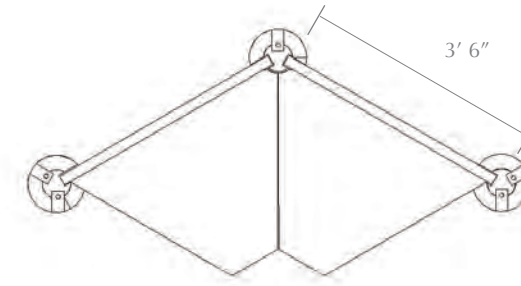
Basic Display

Isometric View

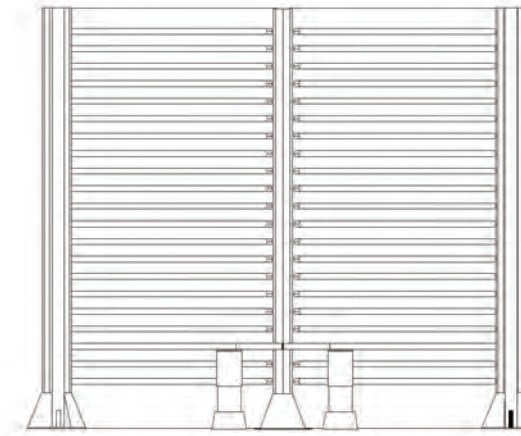


This two panel configuration is the basic composition of the system. Using 3 posts, 2 panels, 2 30" shelves and 2 legs, it creates the stage for a larger item to rest on the shelf and visual graphics to be attached to the panel to inform the viewer. The vents allow for brochure holders to be easily hung. The shelves can be adjusted to any height. The leg supports can be adjusted by twisting and sliding the inner leg and retwisting to tighten the leg. The legs are attached at the optimal point for support under the shelf.

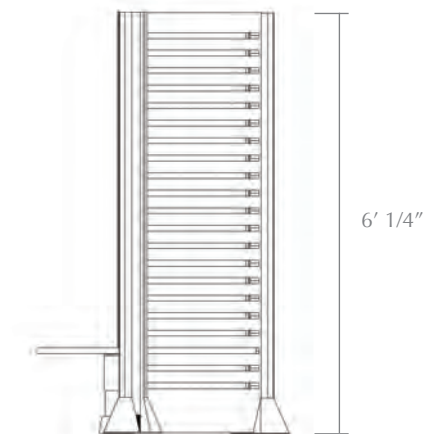
Top View



Front View



Side View



Display Furniture

Various Displays

Display Version 1

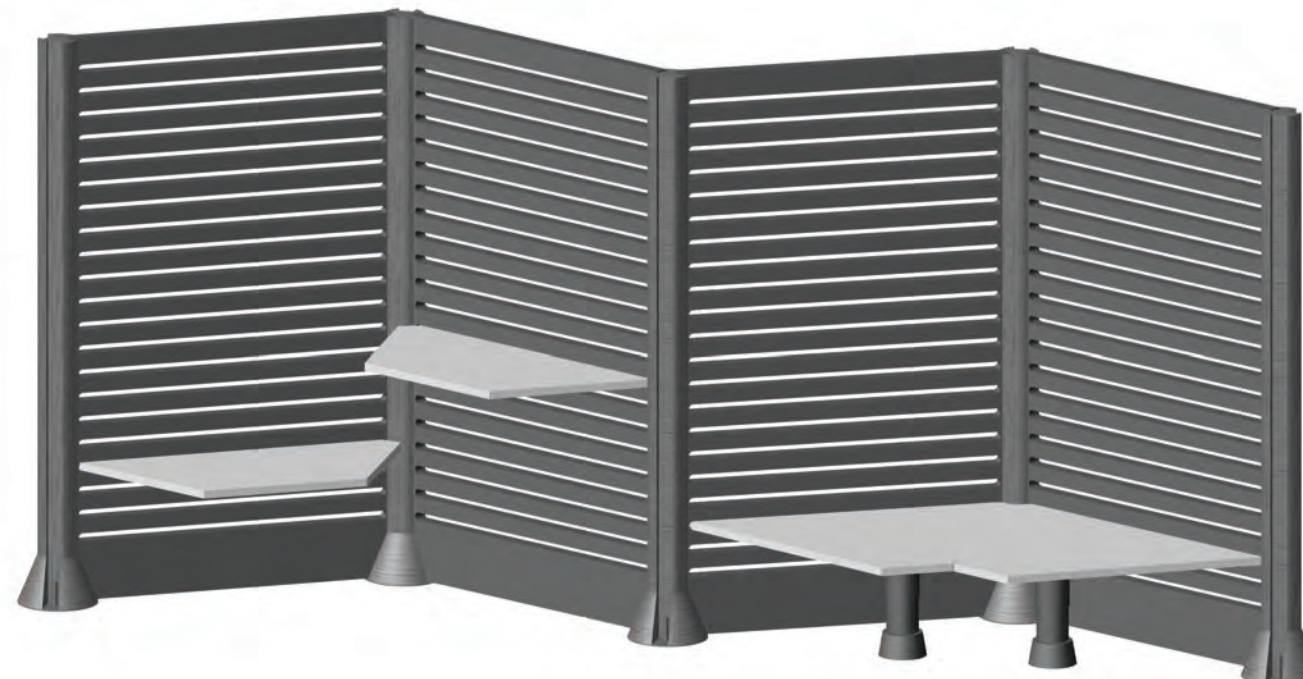


This configuration creates 360 degrees of display space. Integrating the various sizes and types of shelves, the display has optimal potential. The various heights of shelves creates increased visual interest.

Display Version 2



The configuration creates an alcove for smaller items to be placed in relation to one another. As the panels can be utilized on both sides, the backside can be optimized with visual graphics.



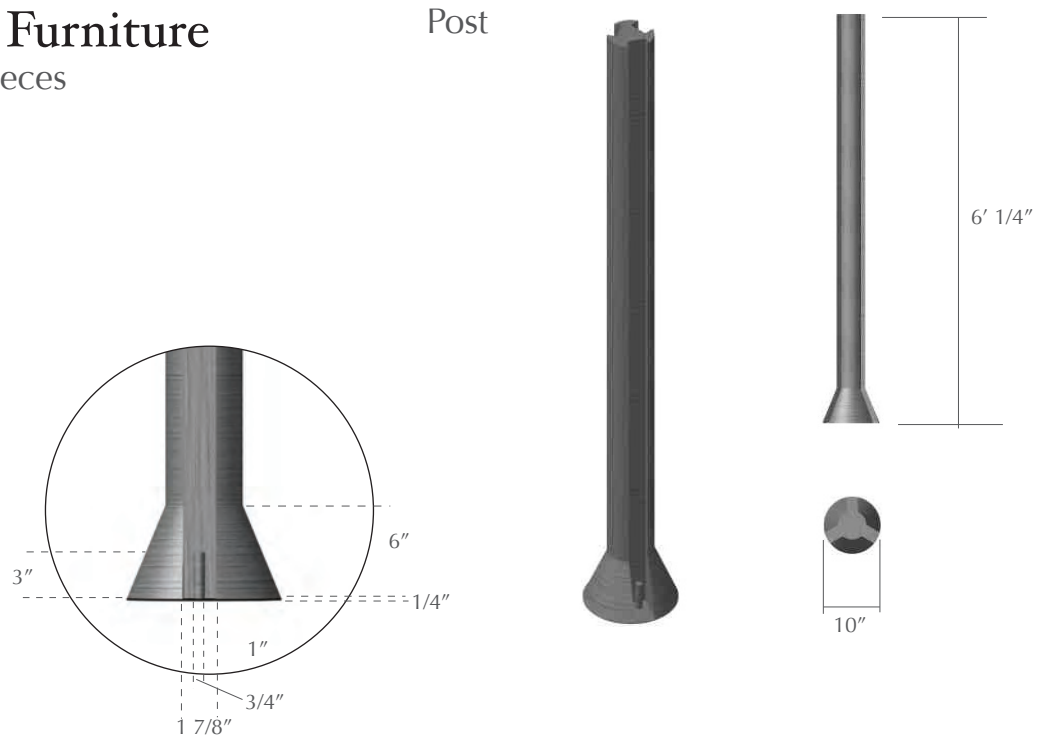
Display Version 3

The long wall configuration easily can divide the large space. It can create privacy for a meeting or hide privates areas or the restrooms. Once again the various shelf heights allow for customization.

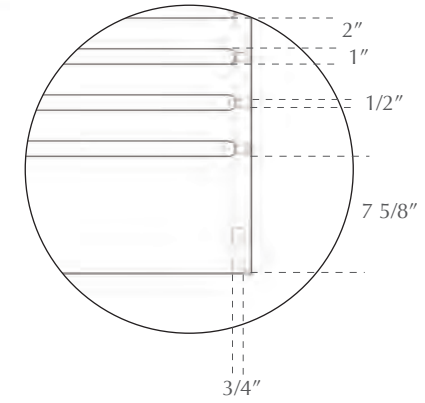
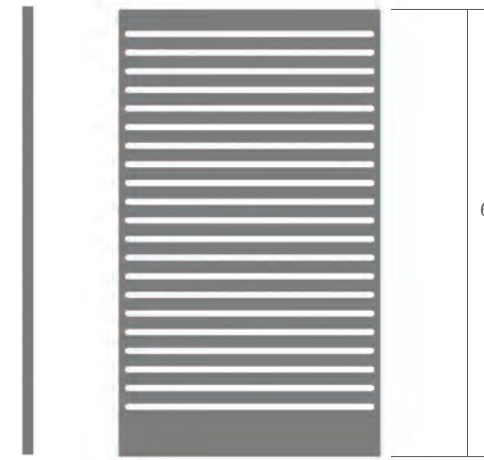
Display Furniture

Modular Pieces

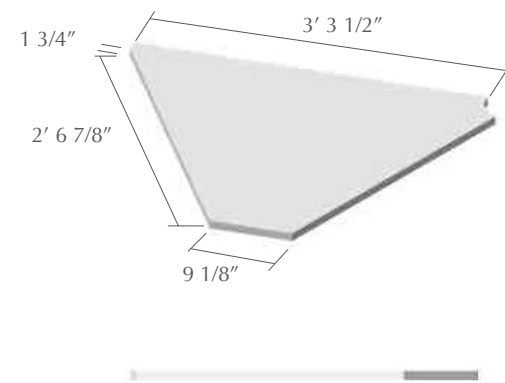
Post



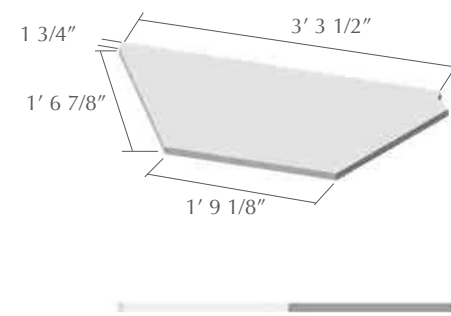
Panel



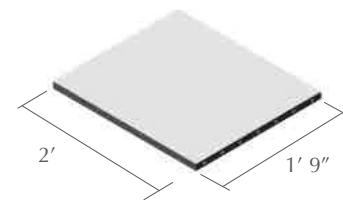
Shelf 30" depth



Shelf 20" depth

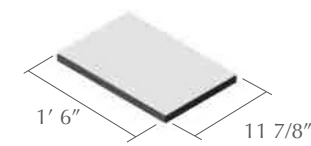


Shelf 1



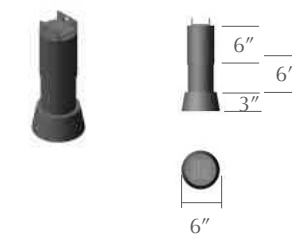
The pin holes are 1/2" in diameter and are placed 2 1/2" apart from each other.

Shelf 2



The pin holes are 1/2" in diameter and are placed 2" apart from each other.

Leg

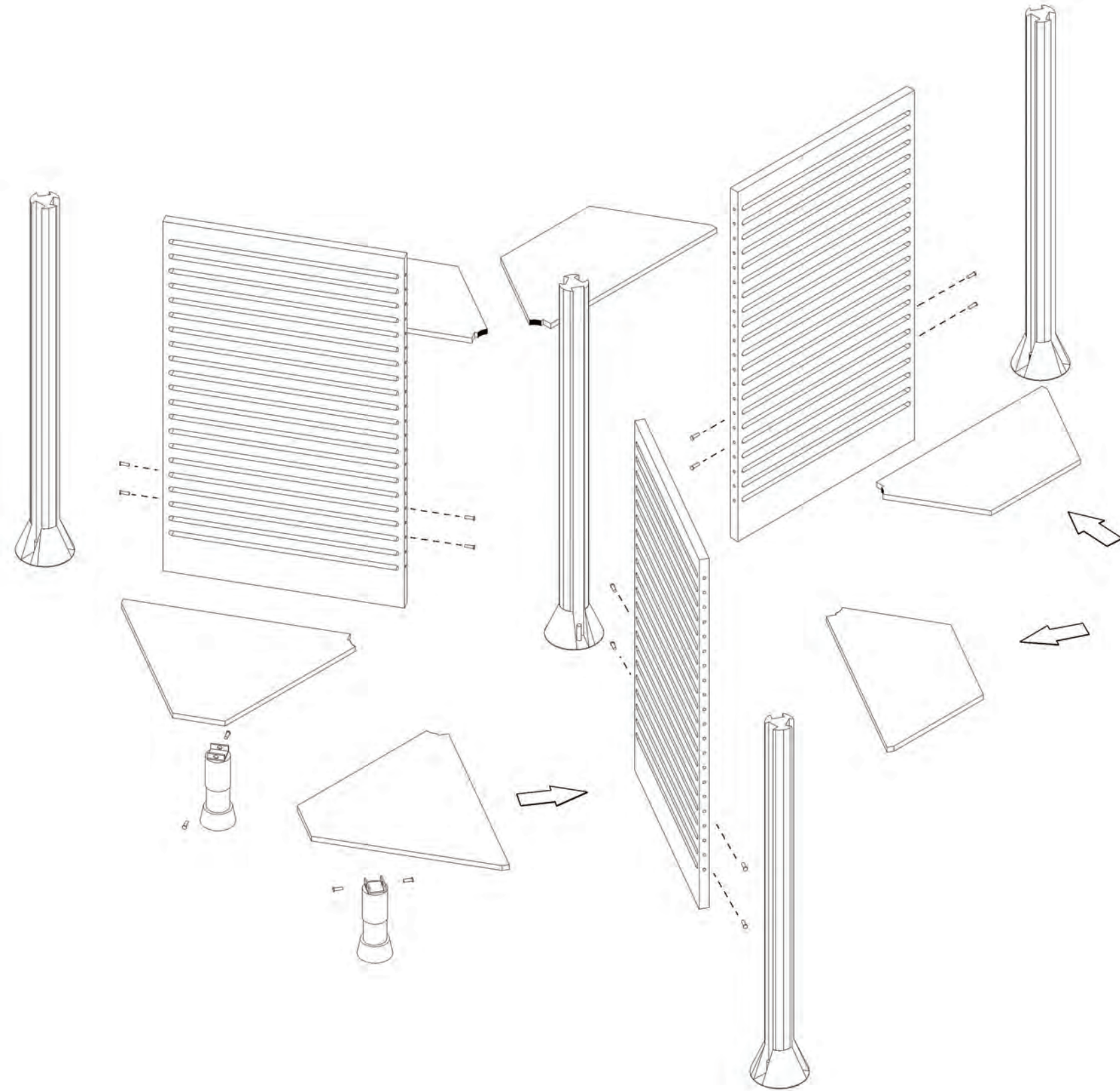


The leg support is used only for the 30" shelf and its height can be adjusted.

Display Furniture

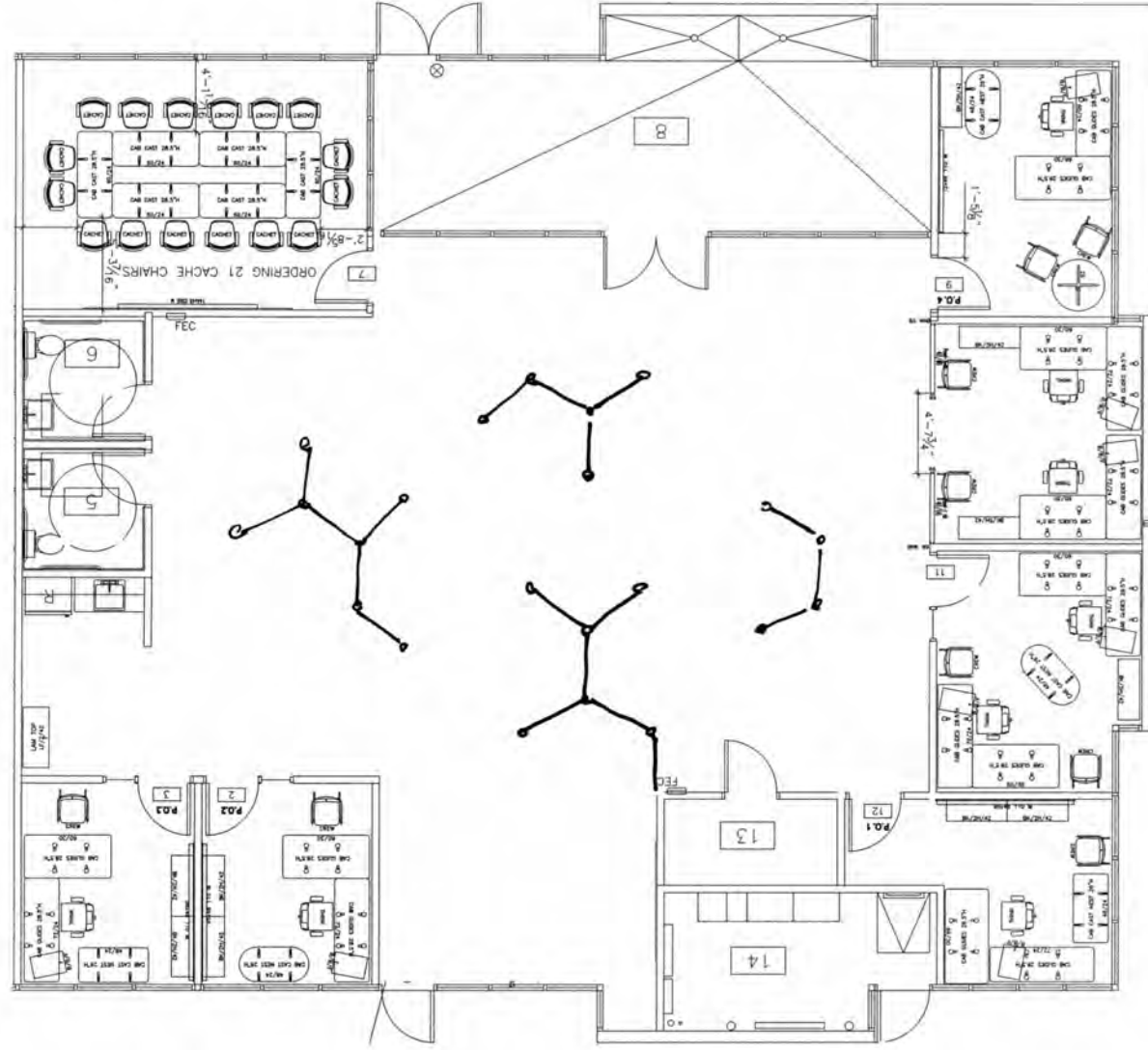
Exploded View

The basic assembly of the system relies upon pins and slots. The walls fit into the opening in the poles and are secured by placing them on a 3" pin attached on the poles at the base. Prior to attaching the walls to the poles, the shelves are attached by sliding them into the vent slots and securing them with a pin from the side of the wall. The support legs are secured under the shelf by placing a pin through the bracket at the top of the leg.

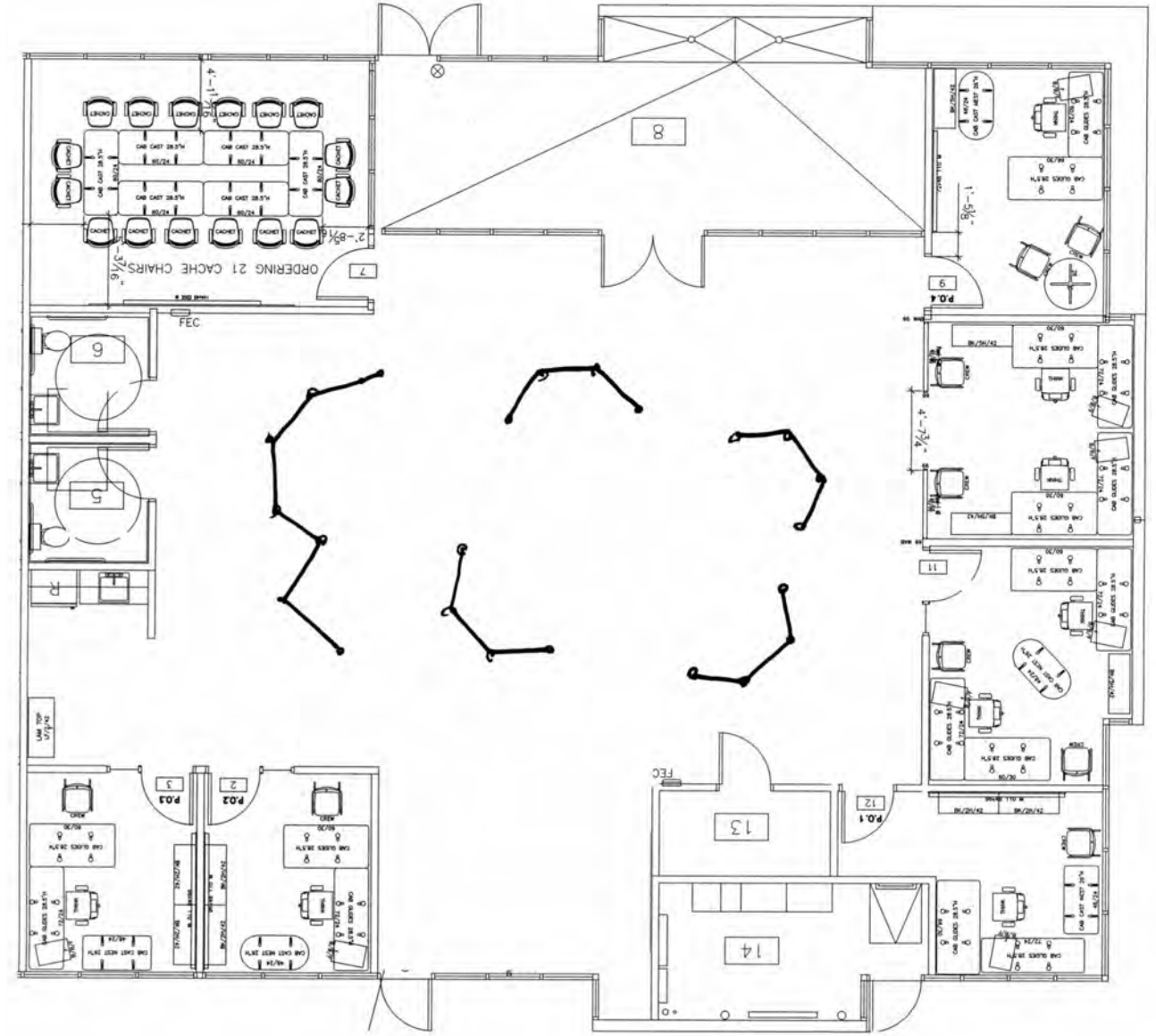


Spacial Organization

Floorplan 1



Floorplan 2



In-Situ

Display Version 3



*Point/explain more specifics