

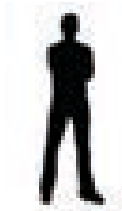
CARSON TAHOE
Cancer Center

Design 186
Signage Systems

Designers
Chris Wang & Cheng Hang

Table of Contents

- A. Project Summary
- B. Reference Material
- C. Concept Design
- D. Sign Location Plan
- E. Main Entry Sign
- F. Exterior Directional Sign
- G. Orientation Sign
- H. Interior Directional Sign
- I. Inforrmation Sign
- J. Regulatory Sign
- K. Celebratory Sign
- L. Interpretive Sign
- M. Final Vocabulary of Sign Type



Client
Carson Tahoe Cancer Center

Design 186
Signage Systems

Designers
Chris Wang & Cheng Hang

Project Summary

Location

Carson Tahoe Cancer Center
Nevada

Background

The Carson Tahoe Cancer Center, located in Northern Nevada provides the first fully accredited, free standing cancer center in the region. Offering the best in cancer care, Carson Tahoe’s services has been recognized by the Commission of Cancer of the American College of Surgeons. By providing a variety of innovative options, patients are able to stay close to home throughout the course of treatment. To make it even more convinient, Carson Tahoe has placed all treatments in one facility, thus eliminating the need to travel to different locations. Through its unique architectural design, the cancer center has been designed specifically to meet patients mental, spiritual and physical needs.

Carson Tahoe Mission Statement

To provide a comfortable and convinient enviroment for cancer patients.

Users & Clients

New Patients, Returning Patients, Nurses, Doctors, Physicians
Most Common: Returning Patients
Age: Varied
Gender: Male or Female
Reason for Visiting: To recieve cancer treatment
Transportation: Automobile

Objective

Design a consistent and recognizable signage system for wayfinding that flows with the Carson Tahoe Cancer Centers unique enviroment.

Client
Carson Tahoe Cancer Center

Design 186
Signage Systems

Designers
Chris Wang & Cheng Hang

Reference Material

North Entrance



Radiation Entrance



South Exposure



Interior View

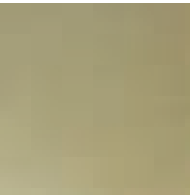


Upper Lobby

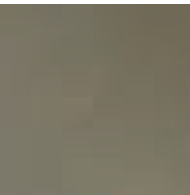


Reference Material

Interior Color Palette



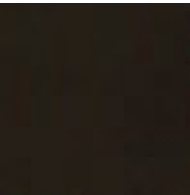
Dominant Wall Color



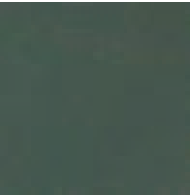
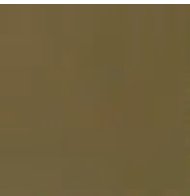
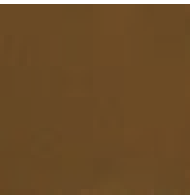
Accent Wall Color
in Lobby Areas



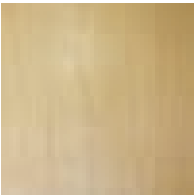
Ceiling Color



Accent Wall Color
in Patient Areas

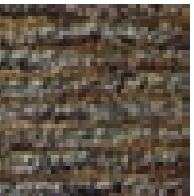


Doors



Clear Maple Laminate

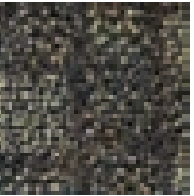
Flooring



Accent Carpet



Lobby Entry Tiles



Hallway Carpet

Concept

OverView

For our concept, we decided to utilize the colors of Carson Tahoes natural enviroment. Using plants and trees as our initial inspiration, we’ve developed a signage system which reflects the unique and modern design of the building as well as the comfortable and welcoming enviroment of the interior.

Sustainable Design

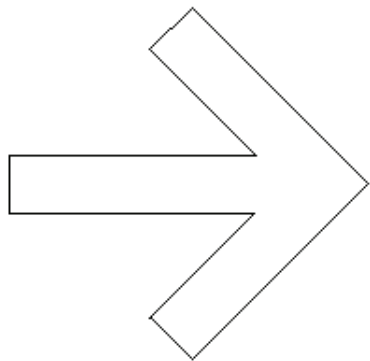
One of our goals in this project was to create our signage system as eco-friendly as possible. We’ve accomplished this through a variety of ways. To replicate the natural enviroment, we used reclaimed wood. Low or no VOC paint, stains, and sealers will be used. The majority of materials that will be used will have come from recycled products. For our graphics, prints will be made on BioFlex Substrate and will use vegetable based inks.

Typeface

Myriad Pro
Interior Typeface
ABCDEFGHIJKLMNOPQRSTUVWXYZ
abcdefghijklmnopqrstuvwxyz
123456787980

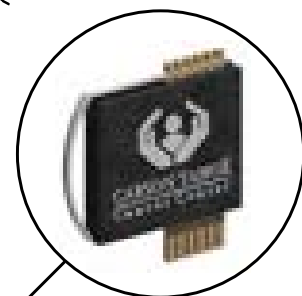
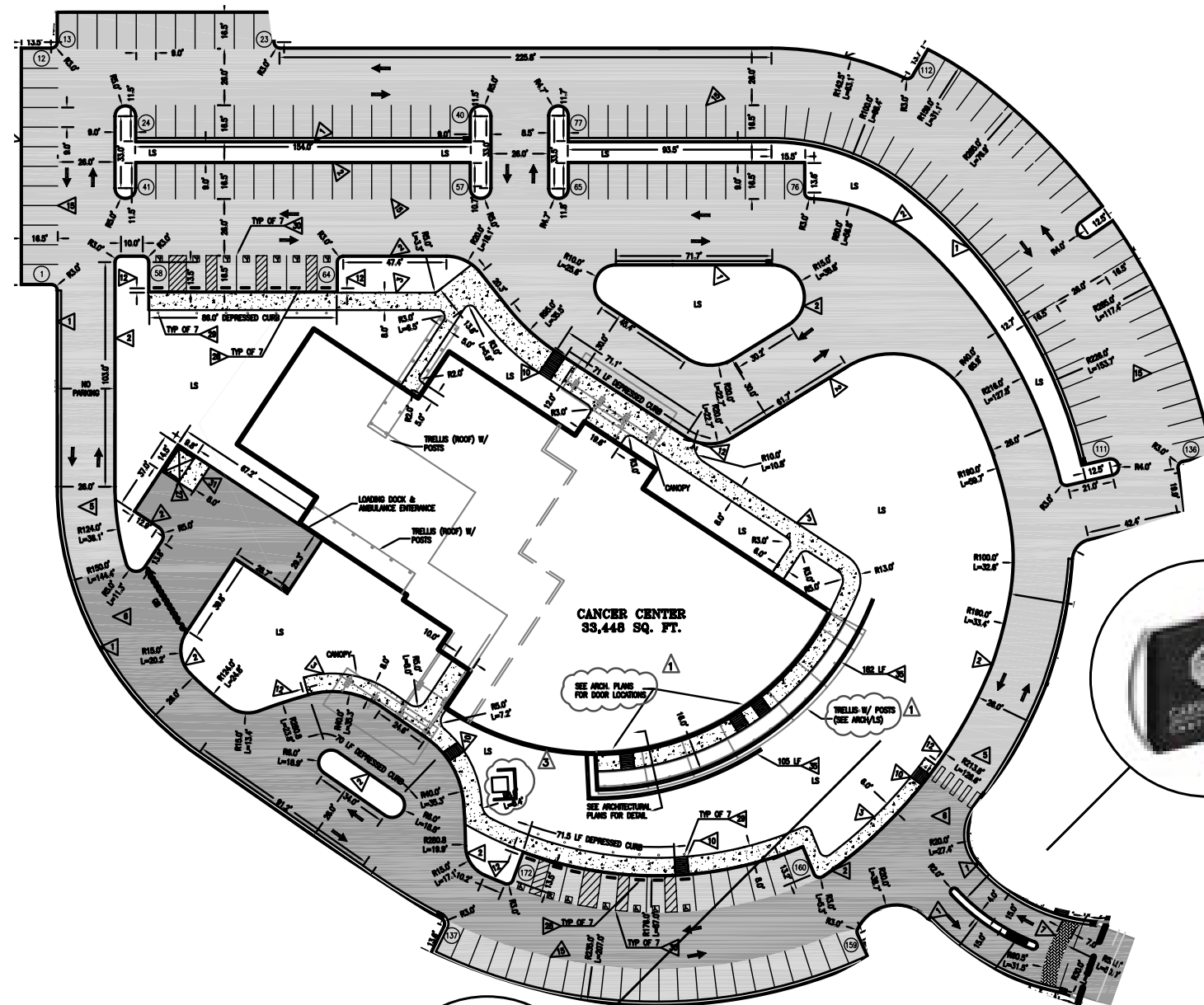
Stone Serif Semi -Bold
Exterior Typeface
ABCDEFGHIJKLMNOPQRSTUVWXYZ
abcdefghijklmnopqrstuvwxyz
1234567890

Arrows

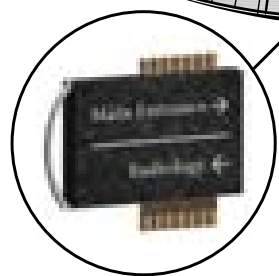


Color Palette

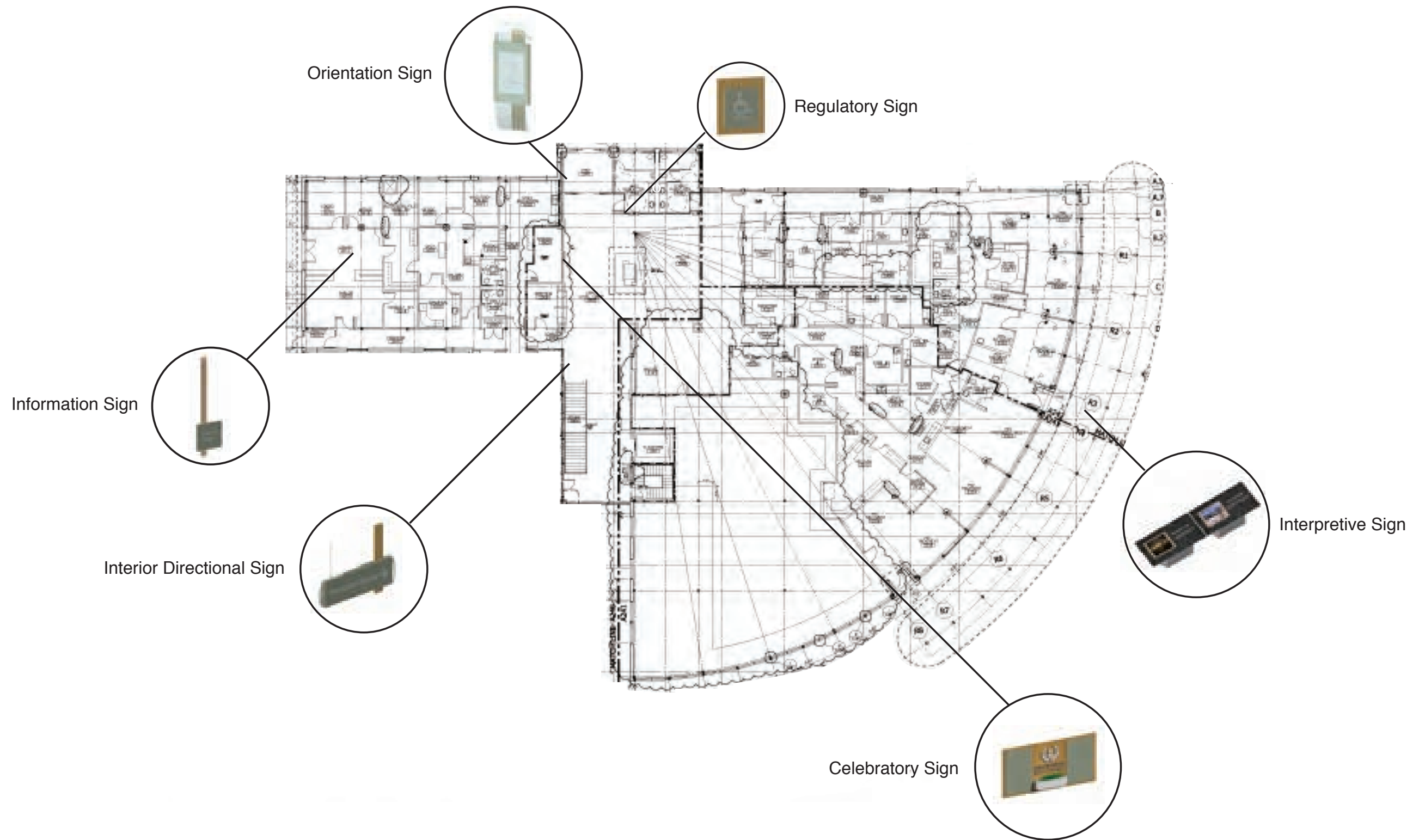




Main Entry Sign



Exterior Directional Sign



Client
Carson Tahoe Cancer Center

Design 186
Signage Systems

Designers
Chris Wang & Cheng Hang



Main Entry Sign

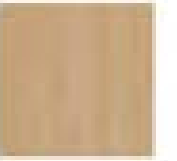
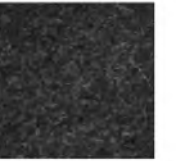
Typeface
Stone Serif Semi-Bold
Typeface Height
8 inches

Lighting
Solar panels located above the sign
provide power to LED flood lights located
on both sides

Stains & Sealers
Product: Durostain
Wood Application
Product: Penetrating WaterStop
Improves water resistance
Low VOC

Foundation Specifications
Steel beams extend 7 feet
into the ground accompanied with
a concrete foundation
These beams are encased in wooden
panels providing a more natural look

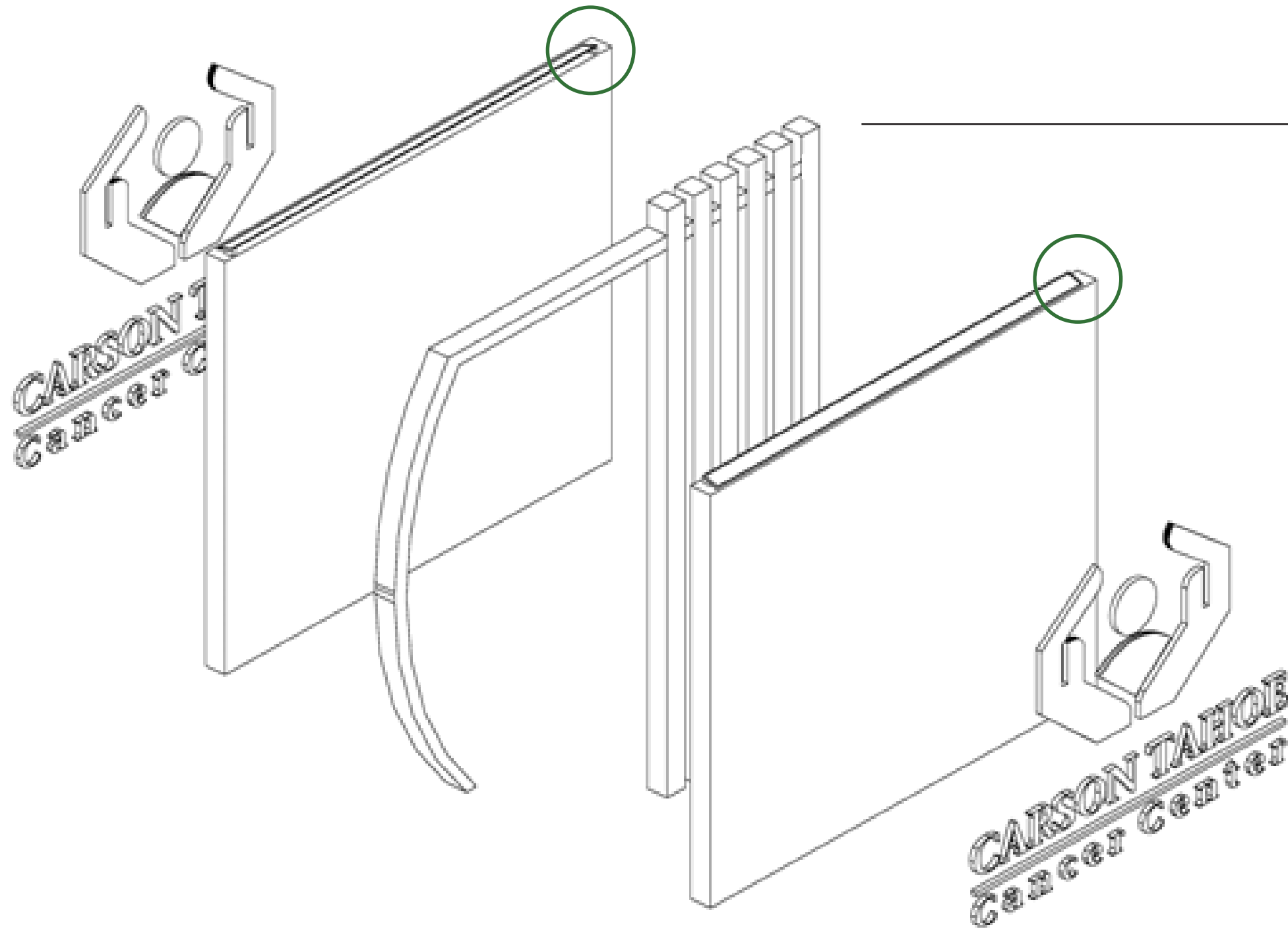
Materials
Reclaimed Wood
85% Recycled Aluminum
Painted Aluminum
Recycled Concrete
Recycled Steel



Client
Carson Tahoe Cancer Center

Design 186
Signage Systems

Designers
Chris Wang & Cheng Hang



Exploded Construction Drawing

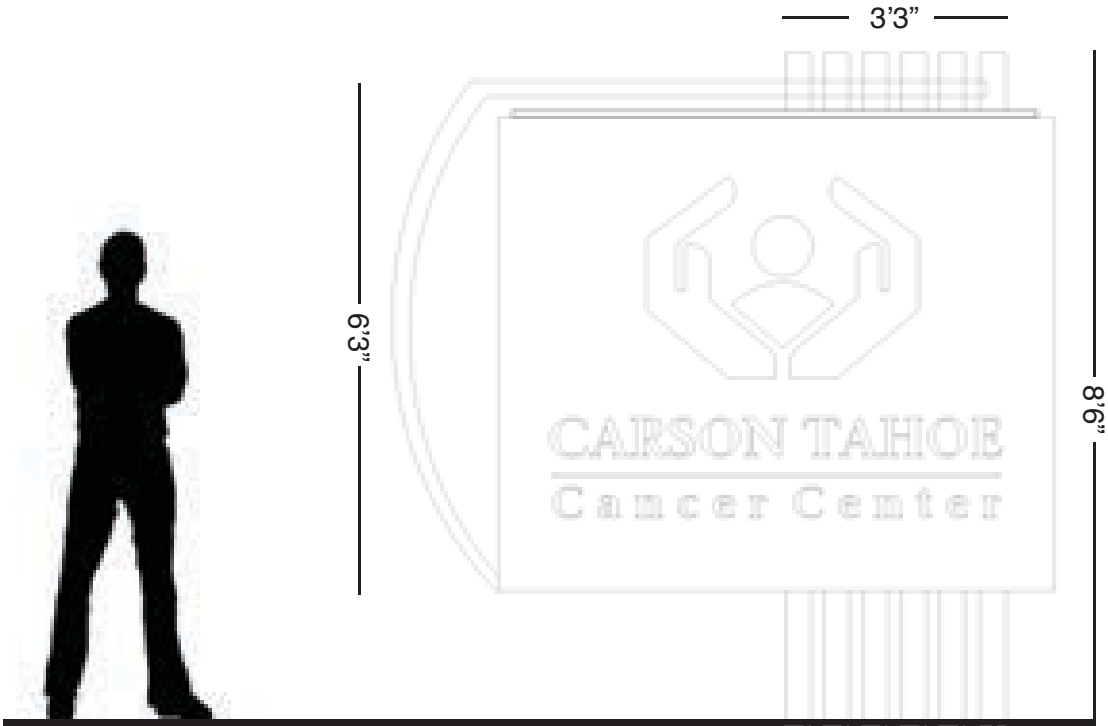


Solar Panels



Support Beam
Side View
Dimensions
4"x4"
Height 8'6"
Materials
Inner
Recycled Steel
Outer
Reclaimed Wood

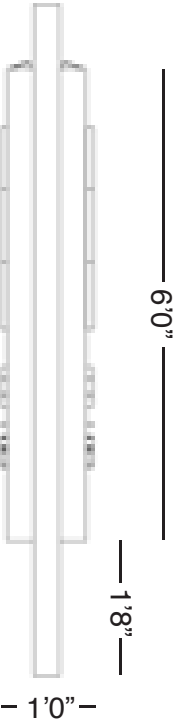
Front View



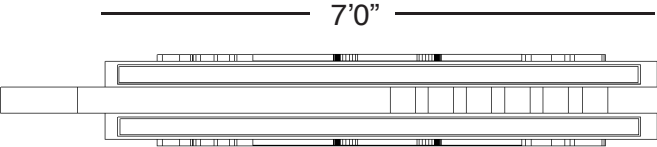
4"x4" Beams are placed three inches apart

Concrete & steel beams form the foundation for the structure above

Side View

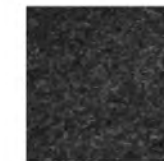


Top View





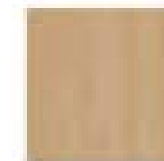
Exterior Directional Sign



Typeface
Stone Serif Semi-Bold
Typeface Height
4 inches



Lighting
Solar panels located above the sign provide power to LED flood lights located in front



Stains & Sealers
Product: Durostain
Wood Application
Product: Penetratin WaterStop
Improves water resistance
Low VOC

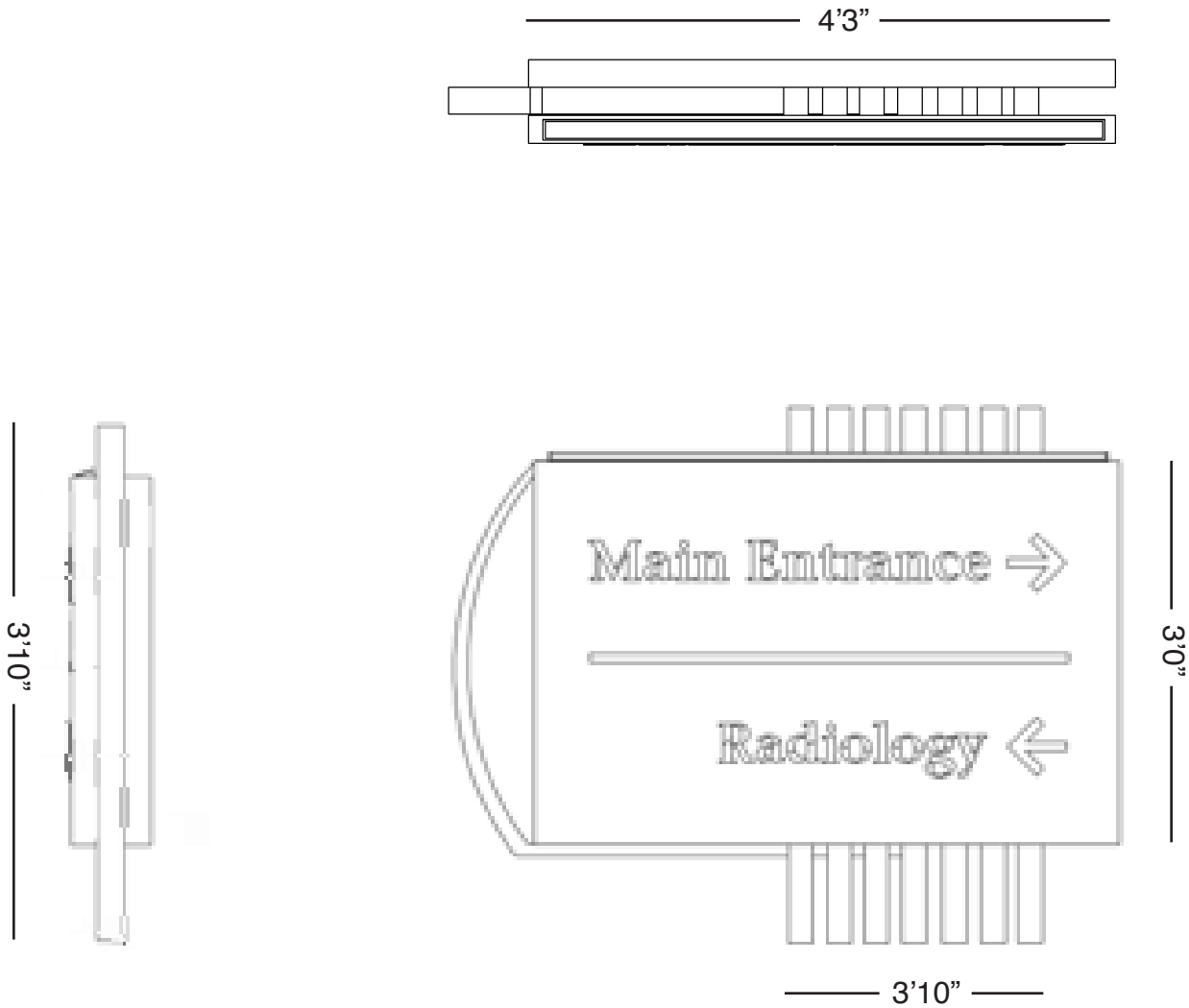
Foundation Specifications
Wooden beams extend 5 feet into the ground accompanied with a concrete foundation

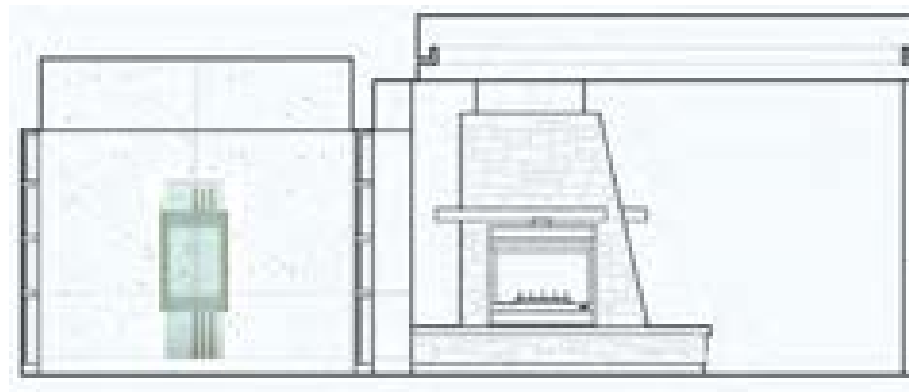
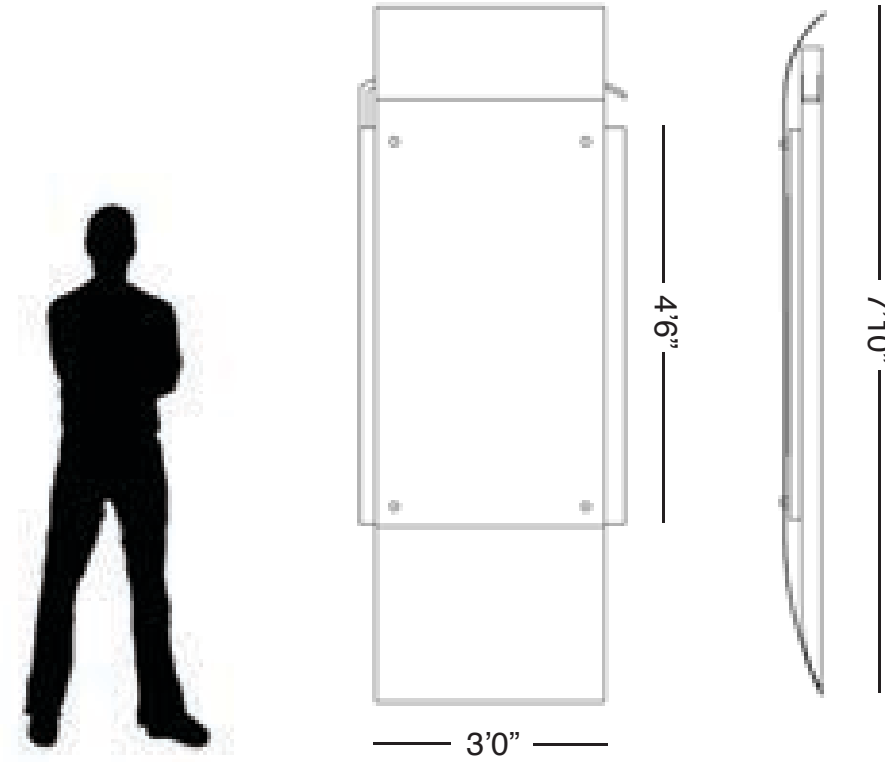
Materials
Reclaimed Wood
85% Recycled Aluminum
Concrete

Dimensions
4'3" x 3'10"



Exterior Directional Sign





Orientation Sign

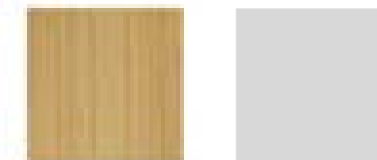
Typeface
Myriad Pro
Typeface Size
16 Points

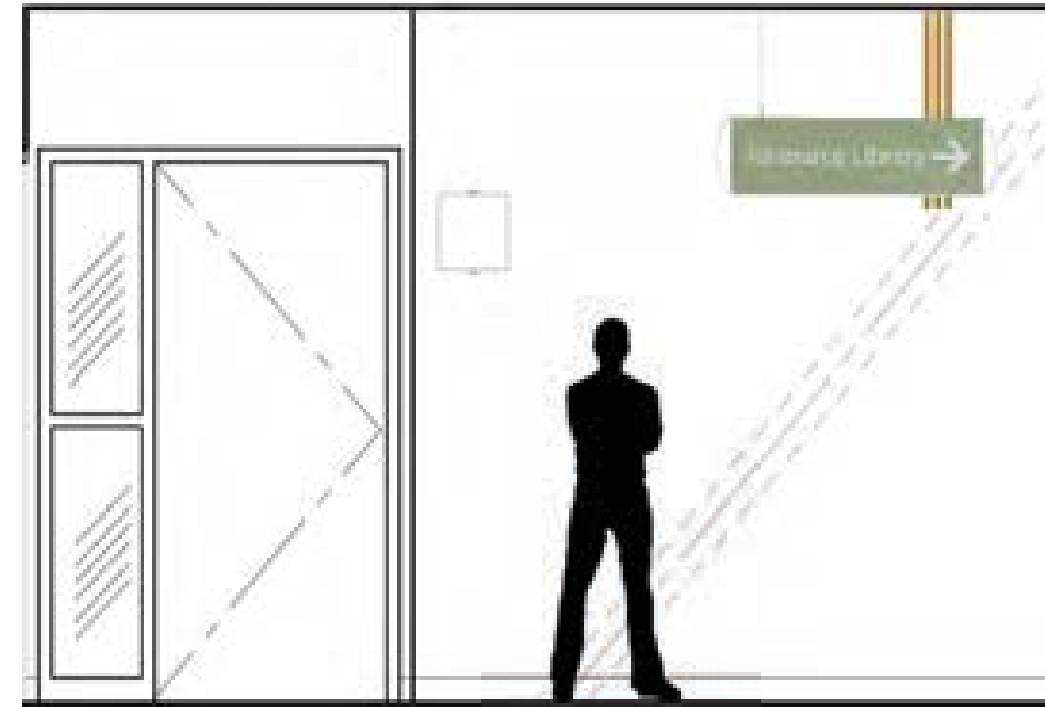
Color / Paint
Auro Natural Paint and Finishes

Graphics
Prints made on BioFlex Substrate
Durable, Fade and Tear Resistant
Vegetable based Inks

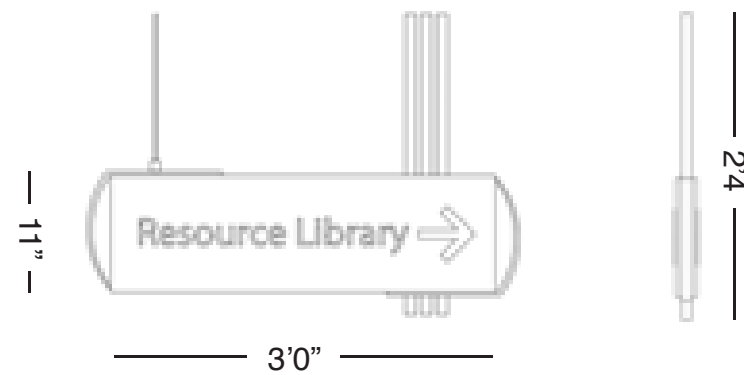
Specifications
7'10" Height
Wall Mounted
Raised 4" from floor

Materials
Reclaimed Wood
85% Recycled Aluminum
Recycled Glass





Interior Directional Sign



Typeface
Myriad Pro
Typeface Height
4 Inches

Color / Paint
Auro Natural Paint and Finishes

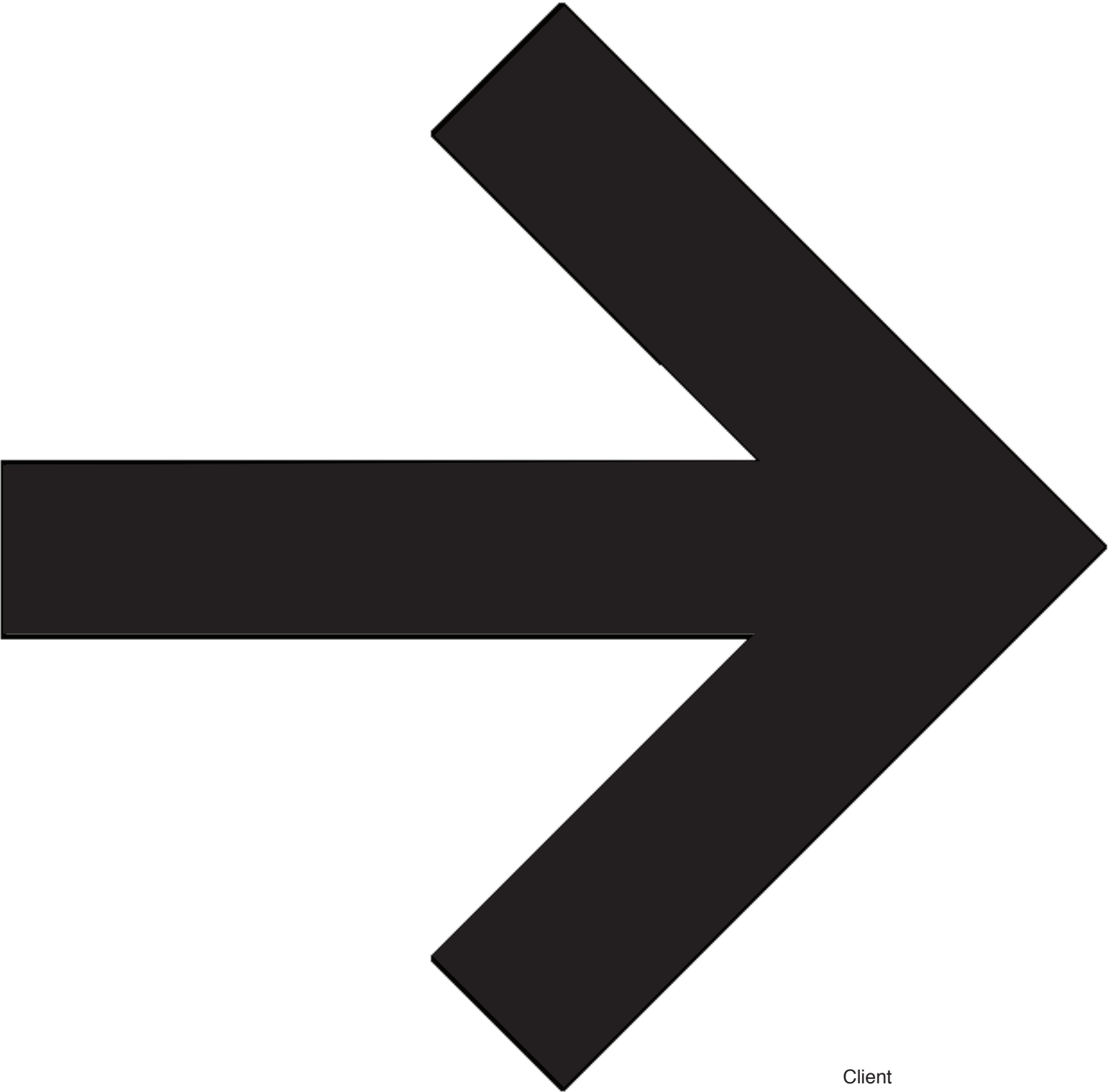


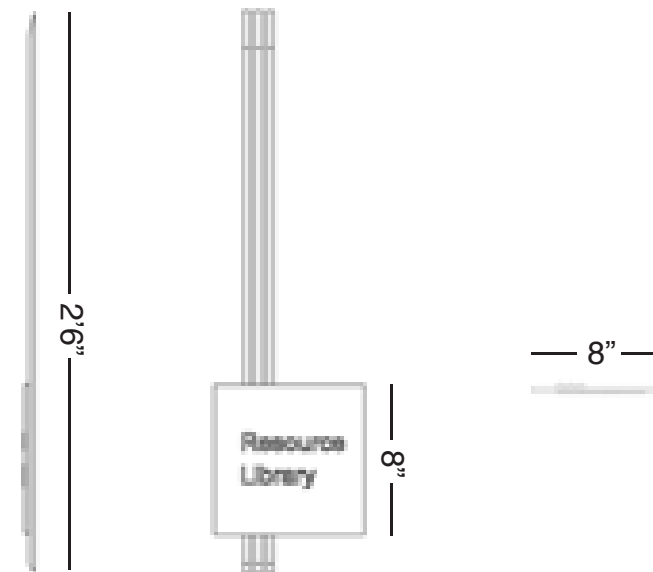
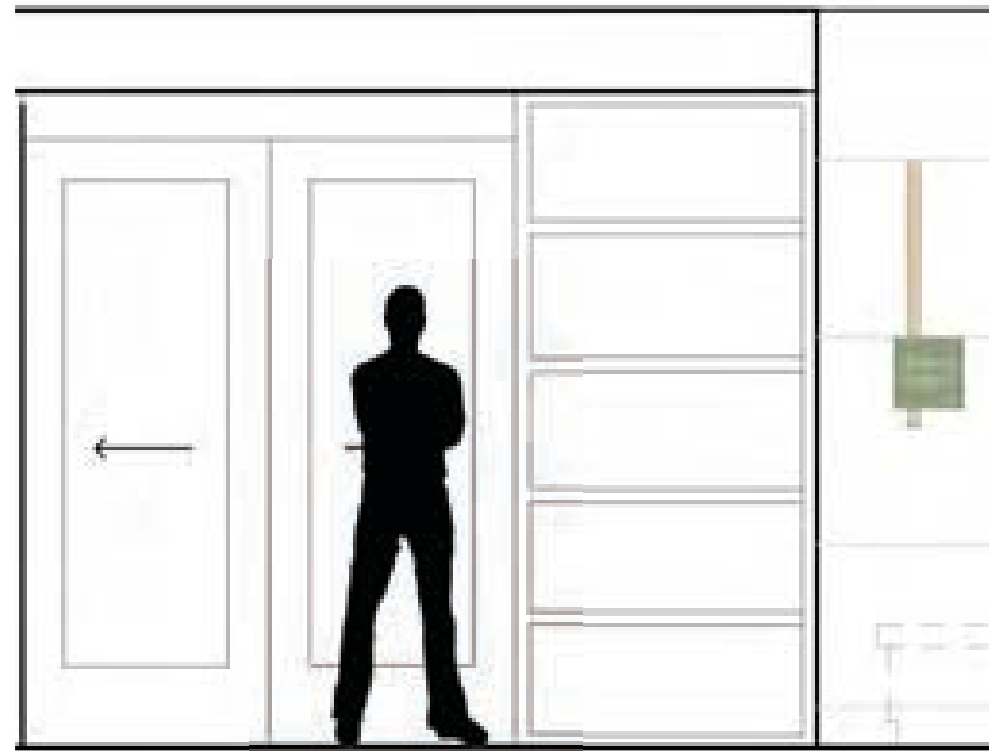
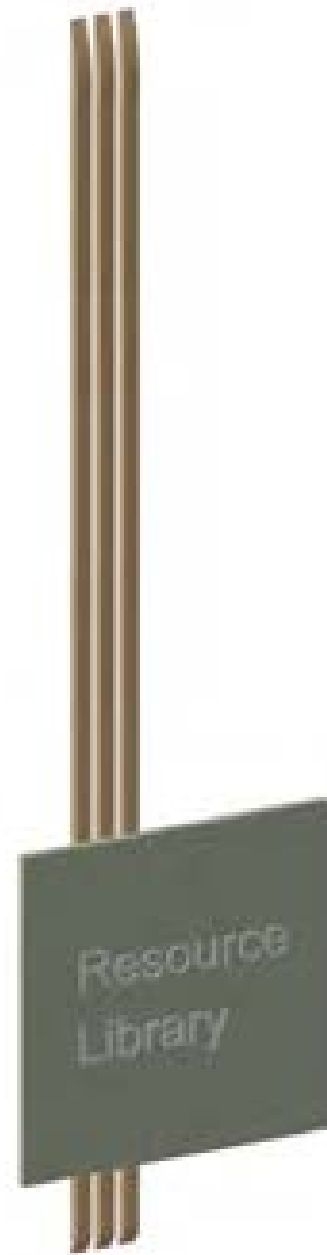
Specifications
Suspended from Ceiling
7 ft Clearance height

Materials
Reclaimed Wood
85% Recycled Aluminum
Painted
Support Wire

Interior Directional Sign
Full Size Detail of Graphic Content

ary





Information Sign

Typeface

Myriad Pro

Typeface Size

72 Point

Color / Paint

Auro Natural Paint and Finishes



Specifications

8"x8"

Sign Height 5'

Wall Mounted

Wood strips extend down from the top groove

Materials

Reclaimed Wood

Painted Recycled Aluminum



Regulatory Sign

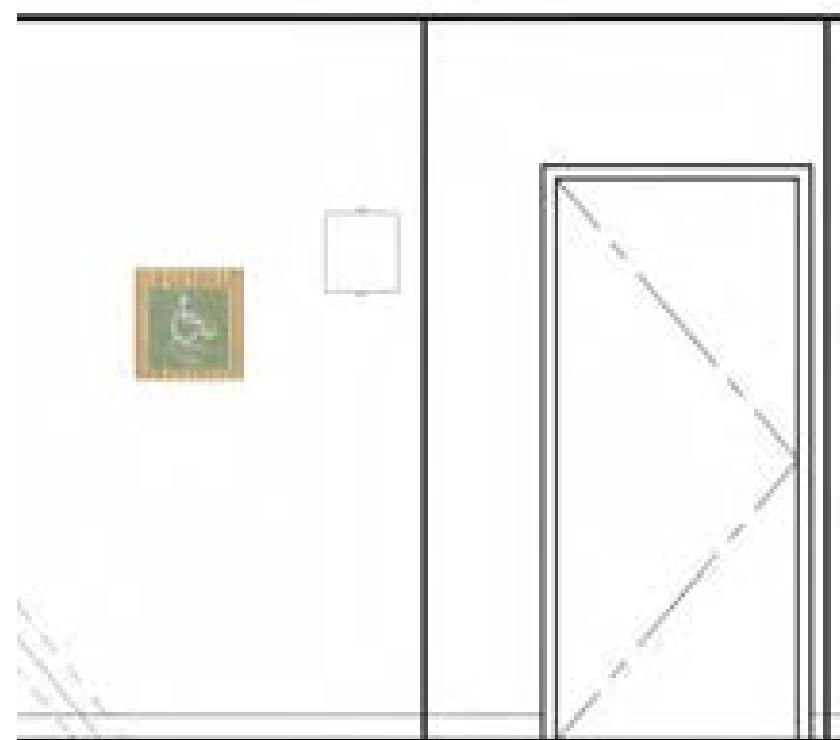
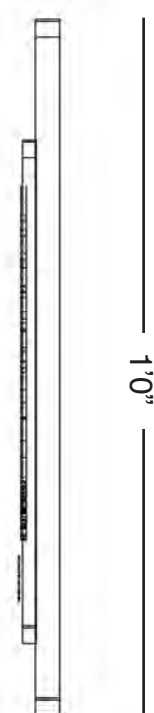
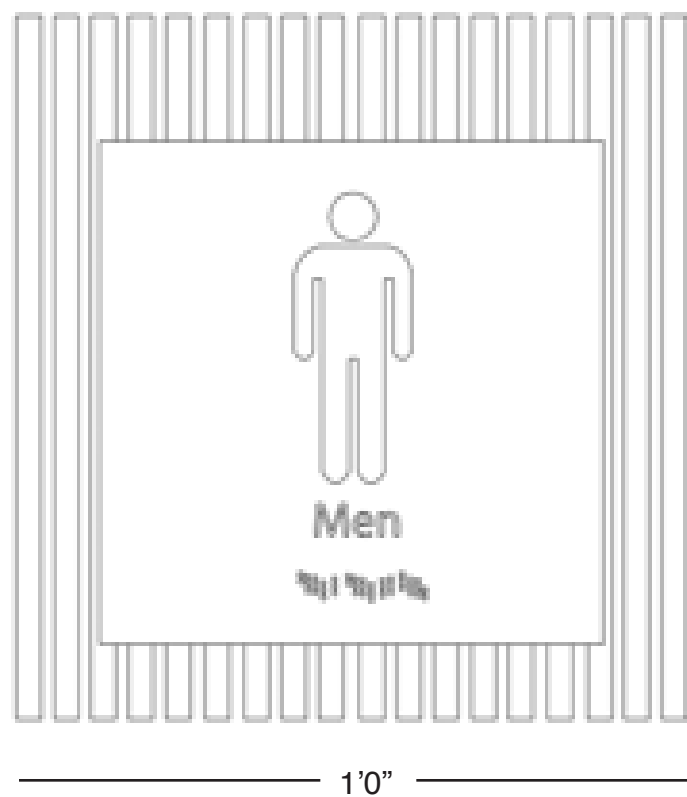
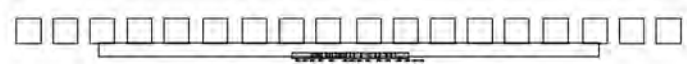
Typeface
Myriad Pro
Typeface Size
48 Point

Color / Paint
Auro Natural Paint and Finishes



Specifications
1'0"x1'0"
Placement Height 5'

Materials
Reclaimed Wood
Recycled Aluminum
Painted





Celebratory Sign Donor Recognition

Typeface
Myriad Pro
Typeface Size
32 Point

Color / Paint
Auro Natural Paint and Finishes

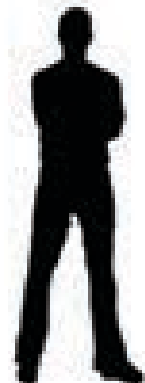
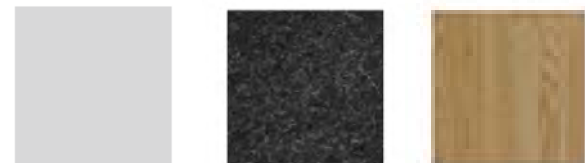


Specifications
19'0" x 8'4"
Raised 4" from floor

Materials
Reclaimed Wood
Recycled Glass
Recycled Aluminum

Stains & Sealers
Product: Durostain
Wood Application





Interpretive Sign South Pergola

Concept

These series of signs provide information about the history of Carson Tahoe and its surroundings

Typeface

Myriad Pro

Typeface Size

24 Point

Graphics

Prints made on BioFlex Substrate
Durable, Fade and Tear Resistant
Vegetable based Inks

Specifications

2 Feet off the ground
Signs contour pathway

Materials

Reclaimed Wood
Recycled Glass
Recycled Concrete

Stains & Sealers

Product: Durostain
Wood Application

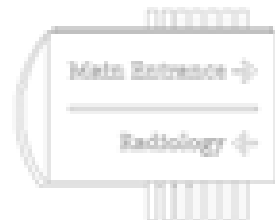
Client
Carson Tahoe Cancer Center

Design 186
Signage Systems

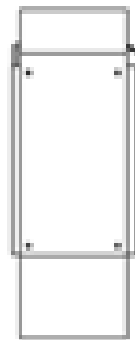
Designers
Chris Wang & Cheng Hang



Main Entry Sign



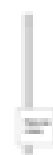
Exterior Directional Sign



Orientation Sign



Interior Directional Sign



Information Sign



Regulatory Sign



Celebratory Sign



Interpretive Sign

M. 1

Vocabulary of Sign Type

Client
Carson Tahoe Cancer Center

Design 186
Signage Systems

Designers
Chris Wang & Cheng Hang