



WABI

SABI

侘寂

Planning & Concept	3
Design Brief	
Object List	
Concept Mapping	
Spatial Analysis	11
Floor Plan	
Canopy Plan	
Section Plan	
Scale Model	
Staging the Environment	16
Design Palette	
Lighting Plan	
Renderings	
Furniture Typology	
Visual Language & Identity	25
Visual Language Palette	
Interior Design	
Exterior Branding	

Phase One

Planning & Concept Design

Core Concept

Japanese textiles demonstrate a rich tradition of design making and exemplify unique techniques that continue to inform contemporary textile/fashion design and education.

Exhibition Details

Title: Wabi Sabi: Japanese Textile Techniques From The Catherine Cerny Collection

Venue: UC Davis Design Museum

Dates: September 17 –December 18,2018 (tentative-may close in January)

Audience: Students, Facultyand campus community, Art and Design Community: Davis, Sacramentoand Bay Area, UC Davis Alumni: Clothing and Textiles, Design, Cultural Studies, Davis residents

Location: UC Davis Design Museum, Cruess Hall

Size of space:

Number of Objects: 104

Exhibition Outline

“Wabi Sabi” is an exhibition that embodies a narrative on Japanese textiles and the many beautiful techniques involved in their creation. This is done through the display of a multitude of objects, procured by collector Catherine Cerny over more than 40 years of study and exploration.

Introduction

Invites visitors to get to know Catherine Cerny, Doctorate, collector and donor of textiles — a small portion of which Wabi Sabi exhibits. This initial section describes Catherine's many travels across the globe and sets the geographic stage of Japan.

Printing and Dyeing

Object displays of Dip / Paste Resist, resist printing, Suminagashi(marbling), Shibori and wax resist will tell the stories behind these printing and dyeing techniques. Displays will be accompanied by videos and photographs to further explain processes as well as historical contexts of the techniques.

Surface Embellishment

This section will detail through objects, photographs and videos, how elaborate embellishment techniques such as hand painting and embroidering were done. A subsection on recycling and reusing will include techniques such as Boro Applique, Aakiori and Aashiko.

Weaving

In this section textiles, videos, pictures and photographs will work to inform visitors of the techniques used in weaving Japanese textiles. Brocade, Jacquard, Braiding and macramé are a few techniques that will be detailed through objects and descriptions. Cultural significance as well as how Catherine came to acquire objects will be described.

Wabi Sabi

Phase One: Planning & Concept Design
Object List: Printing & Dyeing

Bronte Blanco + Alecia Decker
UC Davis Design Museum



P.1.147
Fabric Panel
78" x 16"
Rayon, Wool



P.2.406
Mulberry Panel (fabric backed)
16" x 10"
Mulberry paper, persimmon tannin,
silk



P.3.506
Mulberry Panel (fabric backed)
16" x 12"
Mulberry paper, persimmon tannin,
silk



P.4.386
Fabric Sample
19" x 15"
Cotton



P.5.649
Mulberry Panel (fabric backed)
12" x 13"
Mulberry paper, persimmon tannin,
silk



P.6.407
Mulberry Panel (fabric backed)
16" x 12"
Mulberry paper, persimmon tannin,
silk



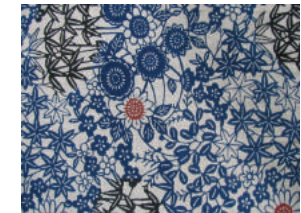
P.7.241
Marbled Scarf
34.5" x 34.5"
Silk



P.8.242
Marbled Scarf
34.5" x 34.5"
Silk



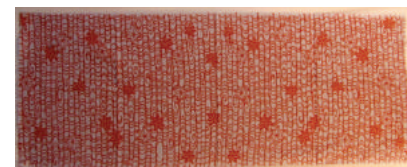
P.9.183
Wrapping Cloth
35" x 35"
Cotton



P.10.651
Fabric Sample
17.5" x 15"
Cotton



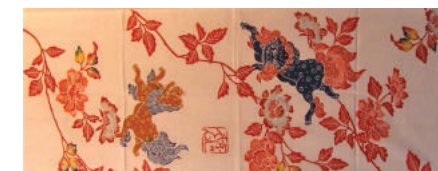
P.11.652
Fabric Sample
17.5" x 15"
Cotton



P.12.91
Towel
35.5" x 13.5"
Cotton



P.13.318
Fabric Sample
18" x 10.5"
Cotton



P.14.89
Towel
35" x 13.5"
Cotton

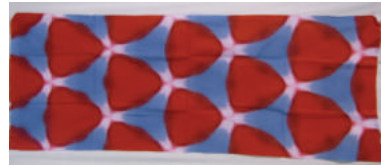


P.15.254
Temari Ball
5" Round
Polystyrene, hemp

Wabi Sabi

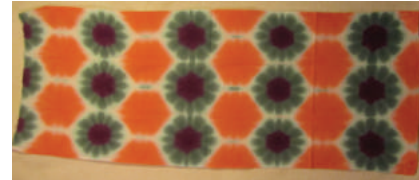
Phase One: Planning & Concept Design
Object List: Printing & Dyeing

Bronte Blanco + Alecia Decker
UC Davis Design Museum



P.17.326

Towel
35" x 14"
Cotton



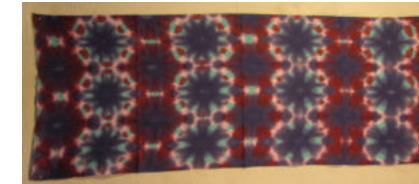
P.18.396

Towel
20.5" x 14"
Cotton



P.19.605

Towel
34" x 13.5"
Cotton



P.20.397

Towel
21" x 14"
Cotton



P.21.430

Under Kimono
28" x 23"
Cotton



P.22.15

Girl's Kimono
33" x 42"
Silk/Rayon, Cotton



P.23.290

Fabric Sample
25" x 12"
Cotton



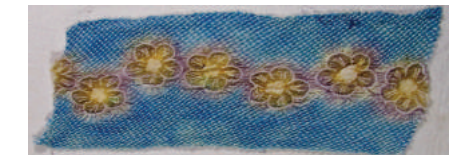
P.24.612

Fabric Sample
9" x 7"
Silk



P.25.329

Towel
37" x 14"
Cotton



P.26.667

Fabric Sample
22" x 8"
Cotton



P.27.293

Fabric Sample
25.5" x 13"
Cotton



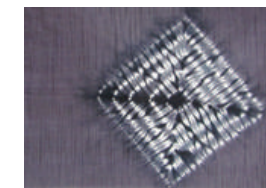
P.28.602

Fabric Sample
13" x 12"
Cotton



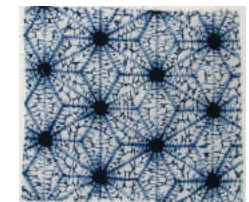
P.29.328

Fabric Sample
37" x 14"
Cotton



P.30.613

Towel
6" x 8.5"
Silk



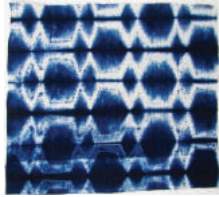
P.31.603

Fabric Sample
13" x 11"
Cotton

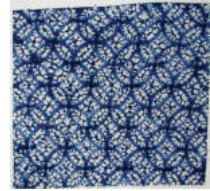
Wabi Sabi

Phase One: Planning & Concept Design
Object List: Printing & Dyeing

Bronte Blanco + Alecia Decker
UC Davis Design Museum



P.32.600
Fabric Panel
13" x 11"
Cotton



P.33.601
Fabric Sample
13" x 11"
Cotton



P.34.772
Fabric Sample
38.5" x 15"
Cotton



P.35.270
Fabric Sample
10" x 5.5"
Cotton



P.36.271
Fabric Sample
15" x 4"
Cotton



P.37.Unknown
Fabric Sample
Unknown
Cotton



P.38.646
Fabric Sample
18" x 3.5"
Cotton



P.39.617
Fabric Sample
10" x 8"
Cotton



P.40.742
Katazome Brush
11" x 2"
Wood, Hair/Fur, Thread



P.41.740
Katazome Brush
4" x 2"
Wood, Hair/Fur, Thread



P.42.739
Katazome Brush
5" x 3.5"
Wood, Hair/Fur, Thread



P.43.741
Katazome Brush
11" x 2"
Wood, Hair/Fur, Thread



P.44.645
Paste Resist Tube
6" x 1.5"
Persimmon, Paper



P.45.740
Katazome Brush
6" x 2"
Wood, Hair/Fur, Thread



P.46.708
Fabric Sample
68" x 14"
Cotton

Wabi Sabi

Phase One: Planning & Concept Design
Object List: Surface Embellishment

Bronte Blanco + Alecia Decker
UC Davis Design Museum



S.1.456
Worker's Vest
29.5" x 15.5"
Cotton



S.2.4
Farmer's Vest
34" x 17"
Cotton



S.3.756
Sash
Unknown
Cotton



S.4.Unknown
Fabric Swatch
Approx. 2" x 2"
Unknown



S.5.Unknown
Fabric Swatch
Approx. 2" x 2"
Unknown



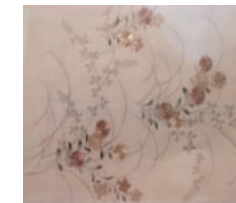
S.6.Unknown
Fabric Swatch
Approx. 2" x 2"
Unknown



S.7.408
Kimono Swatch
17" x 13"
Silk, Metallic



S.8.134
Tapestry
28" x 18"
Rayon



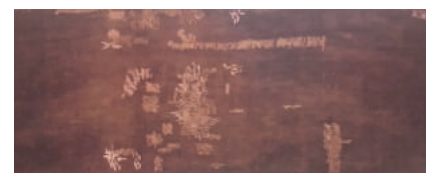
S.9.729
Fabric Sample
6.5" x 13"
Silk



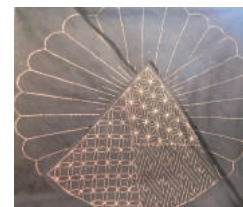
S.10.728
Fabric Sample
6.5" x 13"
Silk



S.11.453
Kimono
45" x 36"
Cotton



S.12.494
Sake Bag
28" x 9.5"
Cotton



S.13.457
Wrapping Cloth
52" x 56"
Cotton



S.14.27
Futon Cover
66" x 53"
Cotton



S.15.106
Fabric Swatch
9" x 9"
Cotton, Metallic

Wabi Sabi

Phase One: Planning & Concept Design

Object List: Weaving

Bronte Blanco + Alecia Decker

UC Davis Design Museum



W.1.724

Gold Threads
17" Long
Gold leaf



W.2.723

Gold Brocade Threads
22.5" x 17.5"
Gold leaf



W.3.429

Sample Fabric
17" x 14.5"
Cotton



W.4.727

Fabric Swatch
Approx. 5" x 5"
Silk, Gold leaf, Metallic



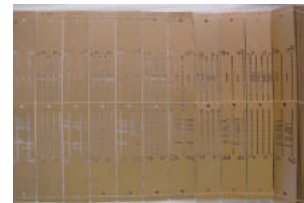
W.5.726

Fabric Swatch
27" x 15"
Silk, Gold leaf, Metallic



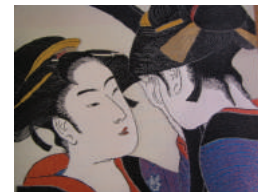
W.6.Unkown

Unknown



W.7.341

Jacquard Punch Card
19.5" x 59"
Paper, String



S.3.282

Small Tapestry
11" x 12"
Synthetic fabric, Polyester



W.8.56

Calendar
15" x 7.5"
Synthetic fabric, Polyester



W.9.283

Fabric Picture
10.5" x 12"
Synthetic fabric, Polyester



W.10.599

Dyed Kasuri Yarn
8" x 14"
Cotton



W.11.209

Weaving Shuttle
10" Long
Wood



W.12.253

Weaving Heddle
17" x 3"
Wood, Bamboo, Paper, Yarn



W.13.252

Weaving Yarn Winder
8" x 8" x 8"
Wood, Bamboo, Paper, Yarn



W.14.250

Weaving Yarn Winder
21.5" x ?
Wood



W.15.Unknown

Thread & Spools
Approx. 10"
Silk, Wood



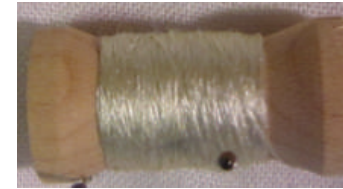
W.16.Unknown

Silk Cocoons, Yarn & Thread Spools
3 Small Boxes
Silk



W.17.Unknown

Silk Worm Cocoons
Small Bag
Silk



W.18.Unknown

Silk Thread Spool
Small Spool
Silk



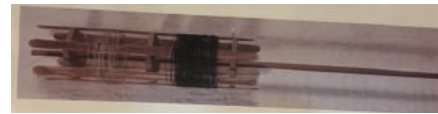
W.19.309

Silk Yarn Bundle
11" x 4.5"
Silk



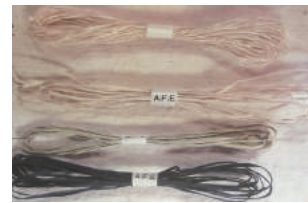
W.20.313

Raw Silk Yarn Bundle
9.5" x 3.5"
Silk



W.21.743

Silk Spindle
14" x 3"
Wood/Bamboo, Thread



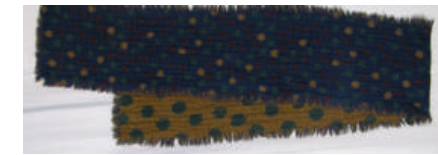
W.22.725

4 Bundles of Paper Yarn
Small Bundles
Paper



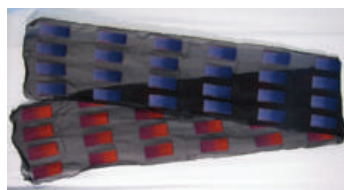
W.23.337

Shawl
70" x 17"
Synthetic Material, Metallic



W.24.264

Scarf
46" x 6"
Unknown



W.25.263

Scarf
79" x 9.5"
Wool, Synthetic



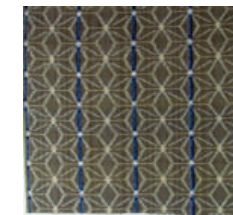
W.26.206

Children's Snow Shoes
Unknown
Cotton, Straw



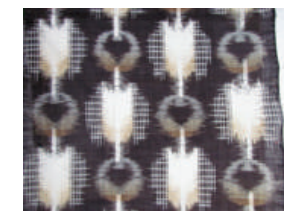
W.27.207

Flip Flops
Unknown
Cotton, Straw



W.28.543

Fabric Sample
51.5" x 13"
Cotton



W.29.594

Fabric Sample
53" x 13.5"
Cotton

Wabi Sabi

Phase One: Planning & Concept Design

Object List: Weaving

Bronte Blanco + Alecia Decker

UC Davis Design Museum



W.30.417

Sample Fabric
6" x 14"
Cotton



W.31.653

Fabric Sample
73.5" x 24"
Cotton



W.32.520

Sample Fabric
10" x 7"
Silk



W.33.541

Fabric Sample
15" x 14"
Cotton



W.34.310

Fabric Sample
11" x 4.5"
Cotton



W.35.515

Sample Fabric
15" x 6.5"
Silk



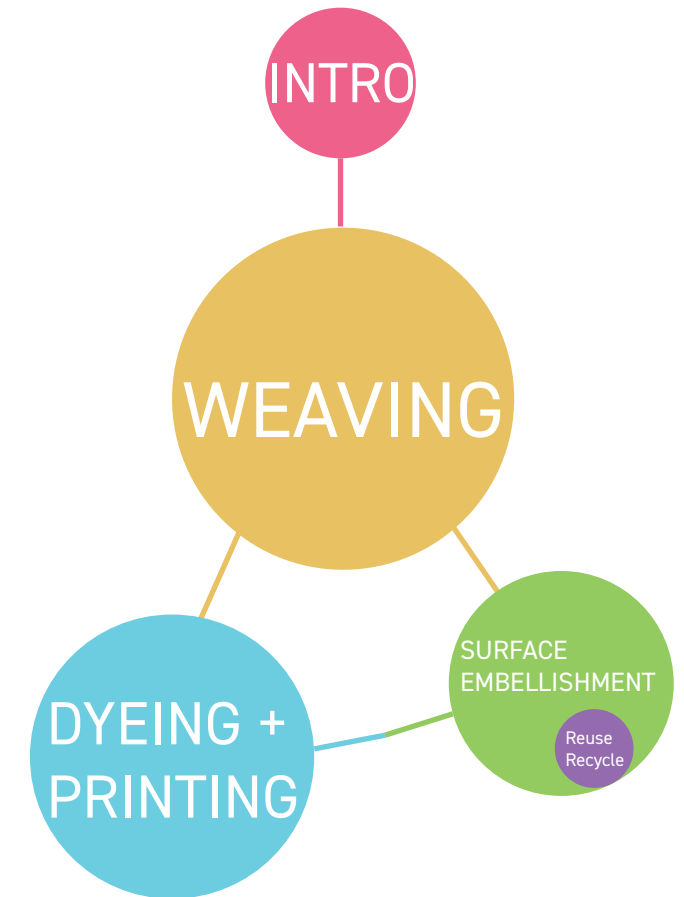
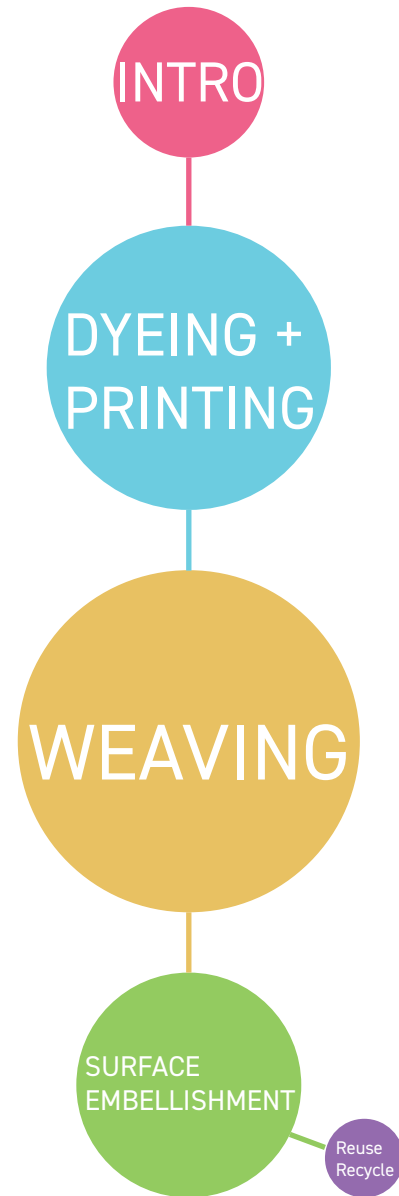
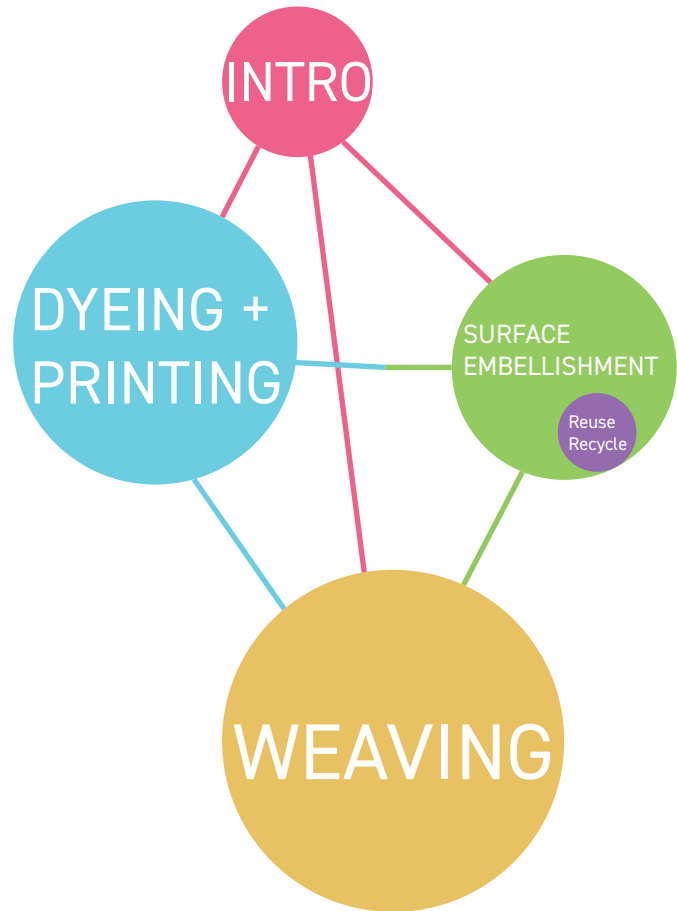
W.36.13

Women's Kimono
63" x 50"
Cotton



W.37.752

Obities (Obijime)
11" x 0.75"
Silk



Concept One

The first concept gives visitors the freedom to explore the three different sections without any sort of imposed hierarchy. The configuration of each section in relation to one another can be changed. However, due to the size difference of each section (as determined by object count), we intend on keeping Surface Embellishment sandwiched somewhere between the other two sections.

Concept Two

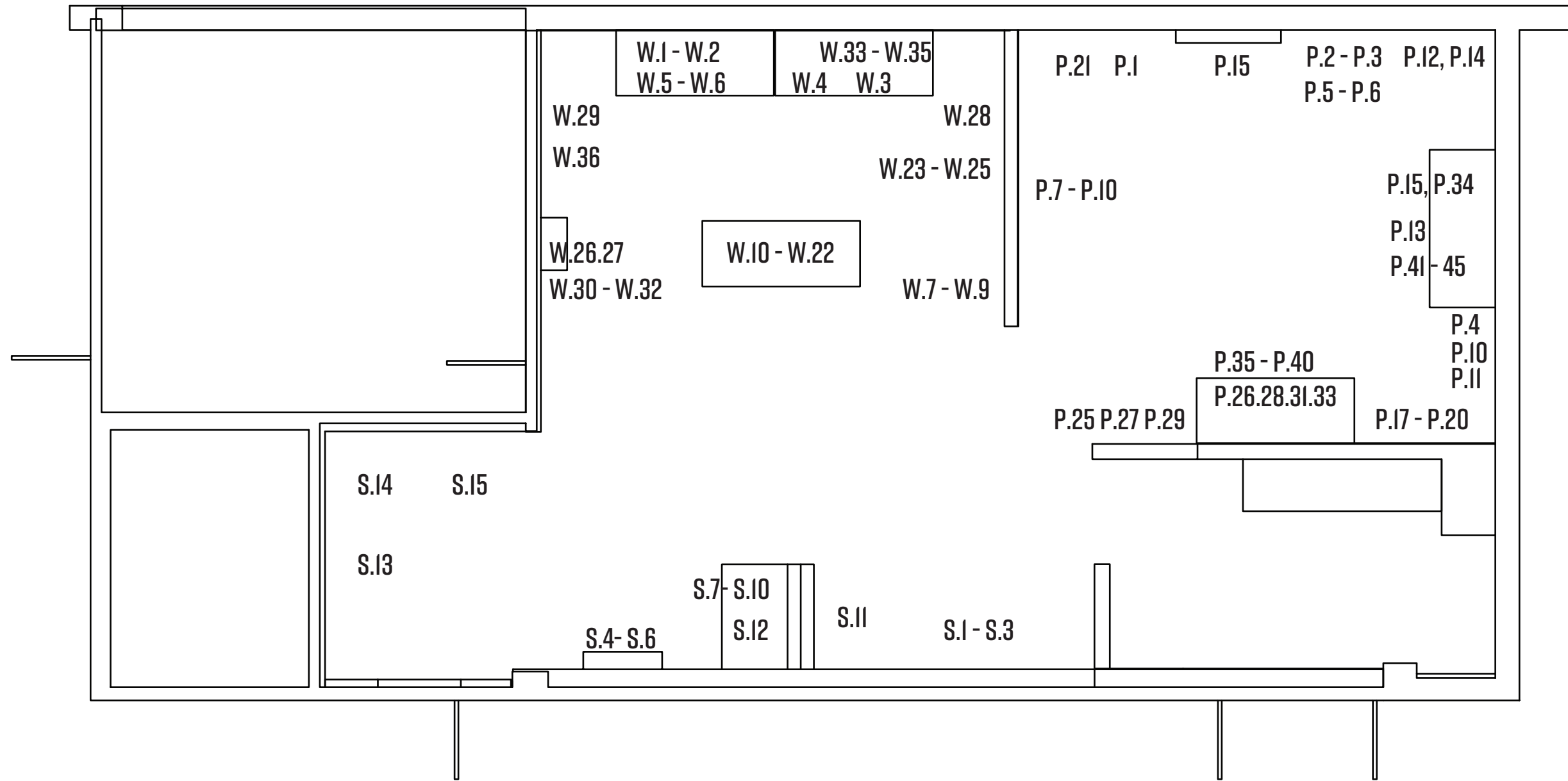
The second concept gives each section its own space, creating a more linear experience. Visitors would be introduced to each section as separate entities. In this diagram, we also pose the possibility of Surface Embellishment's sub section being a separate entity – experiences/introduced outside of SE's section.

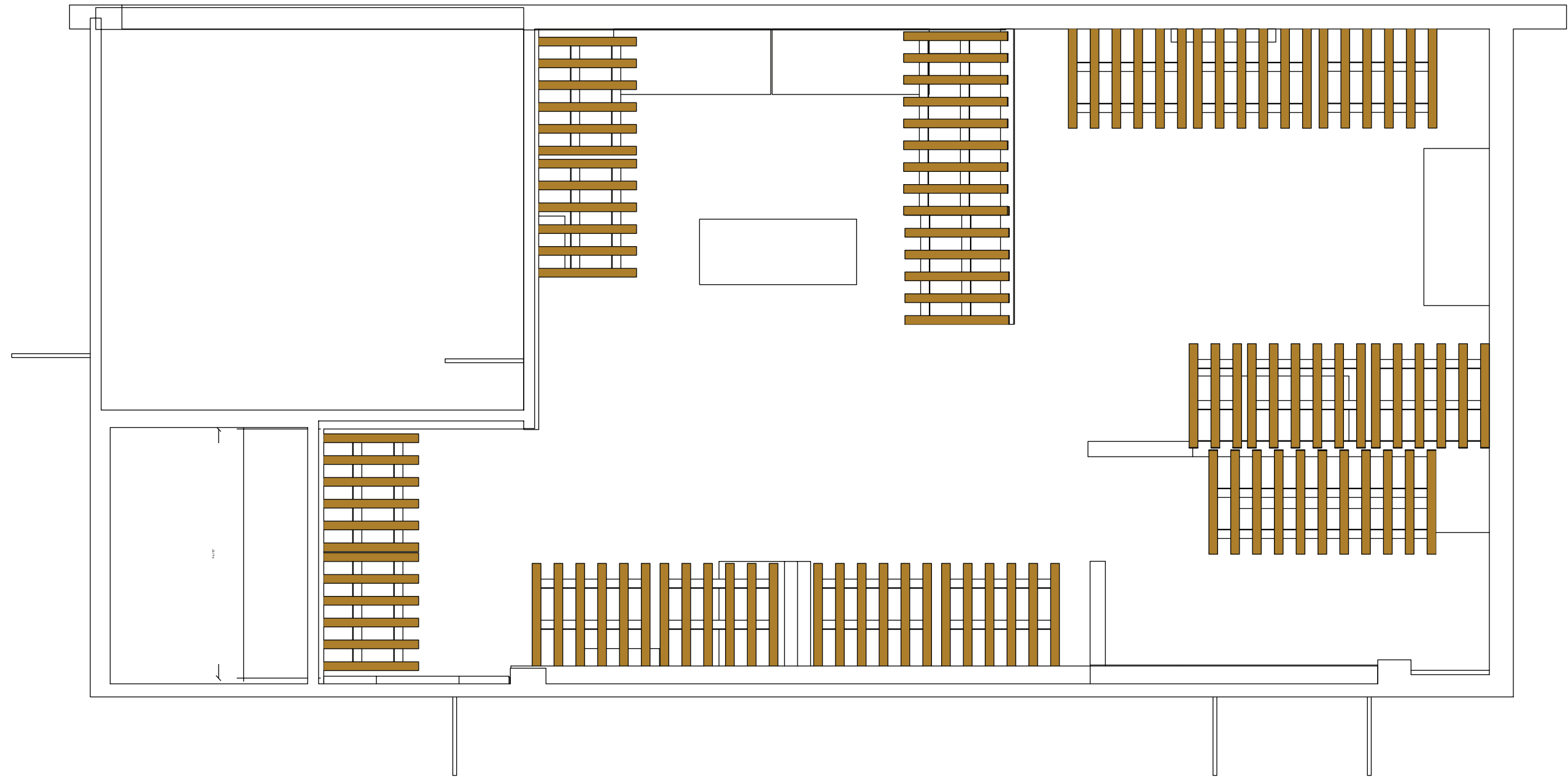
Concept Three

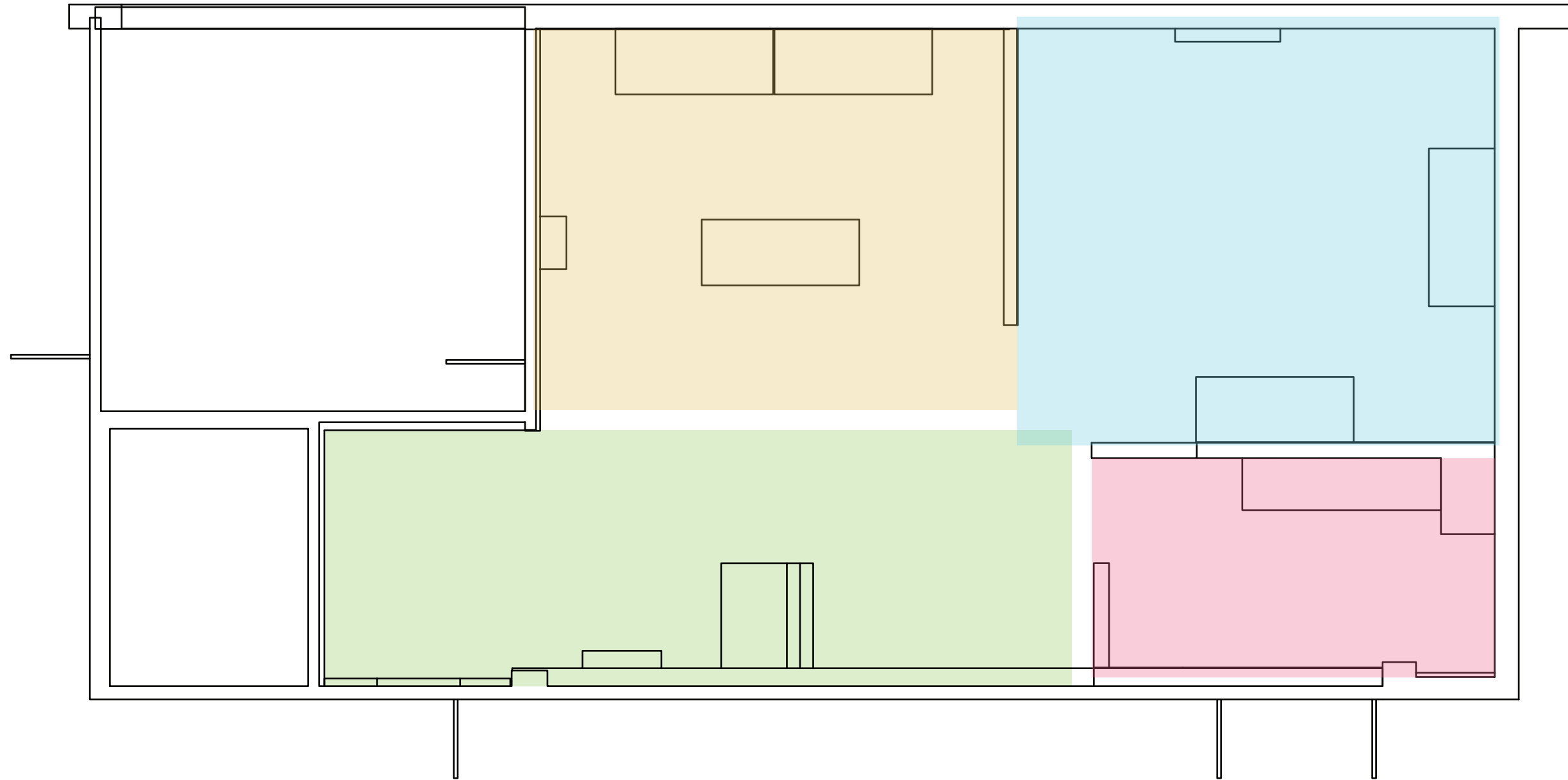
Our third concept loosely takes into consideration how the three sections can be read chronologically as a textile's process of creation. The visitor experiences the initial process of Weaving, then has the option of exploring Dyeing + Printing or Surface Embellishments – As some textiles will skip the dyeing/printing process and go straight to embellishments.

Phase Two

Spatial Analysis







INTRO

SURFACE EMBELLISHMENT

WEAVING

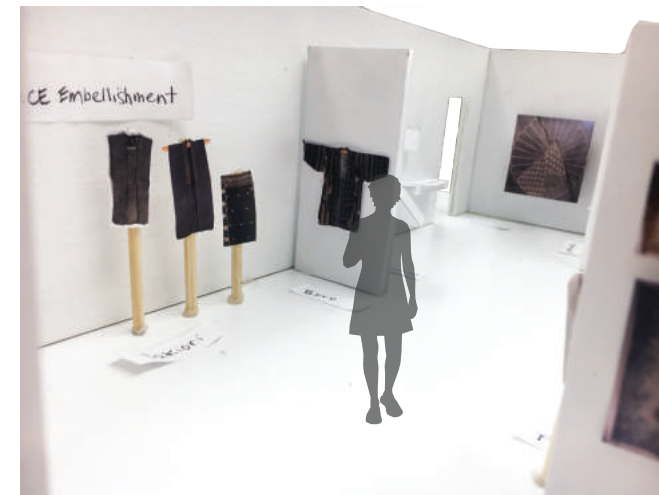
PRINTING & DYEING



Weaving



Printing & Dyeing



Surface Embellishment

Phase Three

Staging the Environment

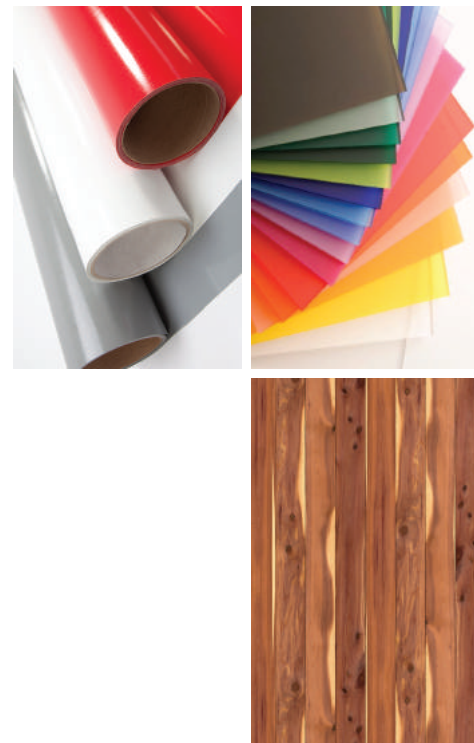
Color Palette

The colors we chose are based on classic Japanese colors. The blue is reminiscent of Indigo dye, the red complements and the two neutral tones will balance the vibrant key colors.

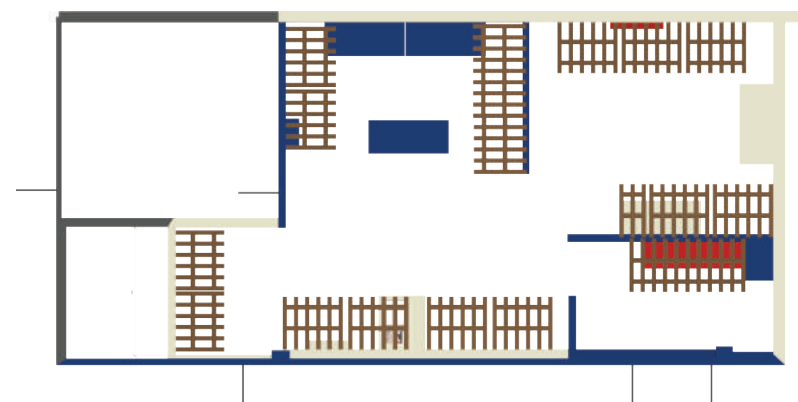


Materials

We will be using Benjamine Moore paint, vinyl, possibly acrylic and preferably cedar or bamboo for the canopies.



Paint Floor Plan



Typography

Intro Title & Section Headers

报隶-简 常规体 (L á n t í n g h ē i - j i ā n) — Demibold
侘寂 (Wabi Sabi)

RIFT DEMI

ABCDEFGHIJKLMNOPQRSTUVWXYZ

Body Text

Clear Sans — Regular

abcdefghijklmnopqrstuvwxyz

ABCDEFGHIJKLMNOPQRSTUVWXYZ

侘寂

lang

WABI SABI

RIFT

Lorem ipsum dolor sit amet, consectetur adipiscing elit, sed diam nonummy nibh euismod tincidunt ut laoreet dolore magna aliquam erat volutpat. Ut wisi enim ad minim. Lorem ipsum dolor sit amet, consectetur adipiscing elit, sed diam nonummy nibh euismod tincidunt

Clear

Lighting Design

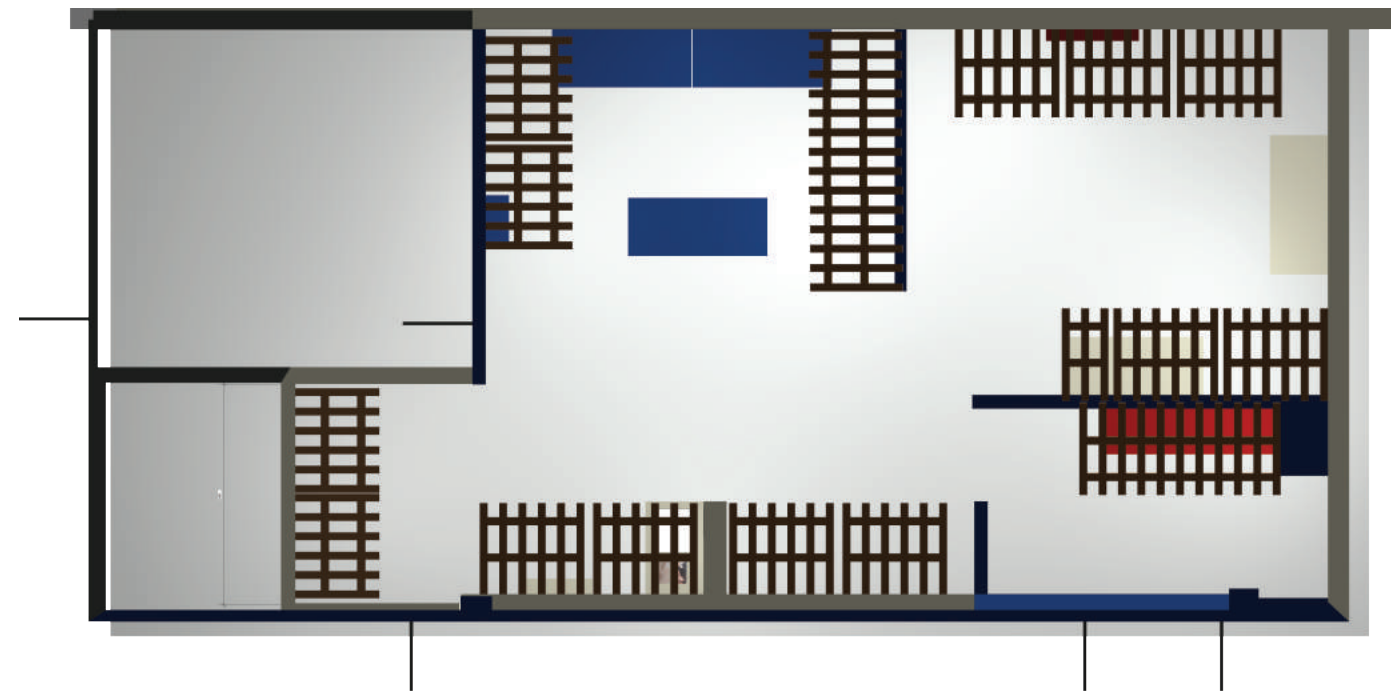
The lighting for this show will need to be very gentle. We will have an abundance of light sensitive fabrics and objects.

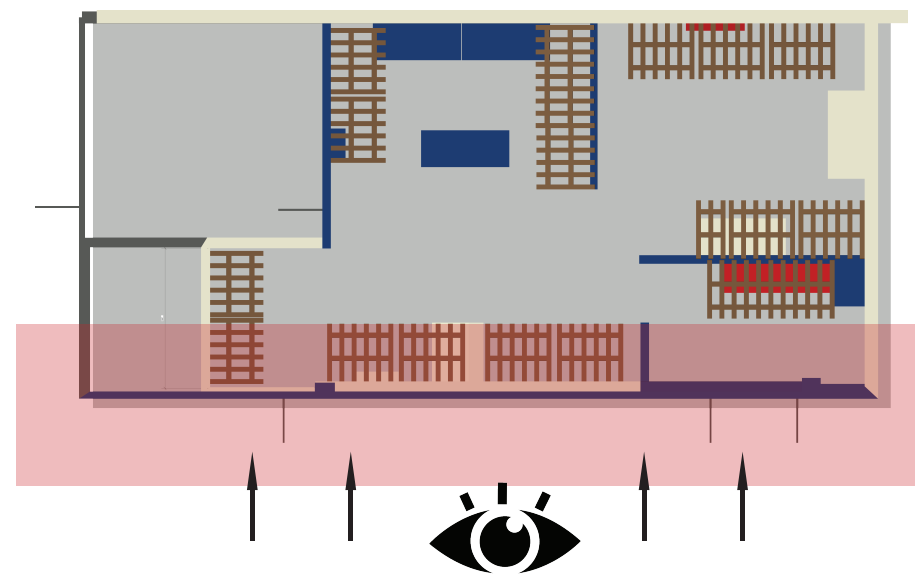
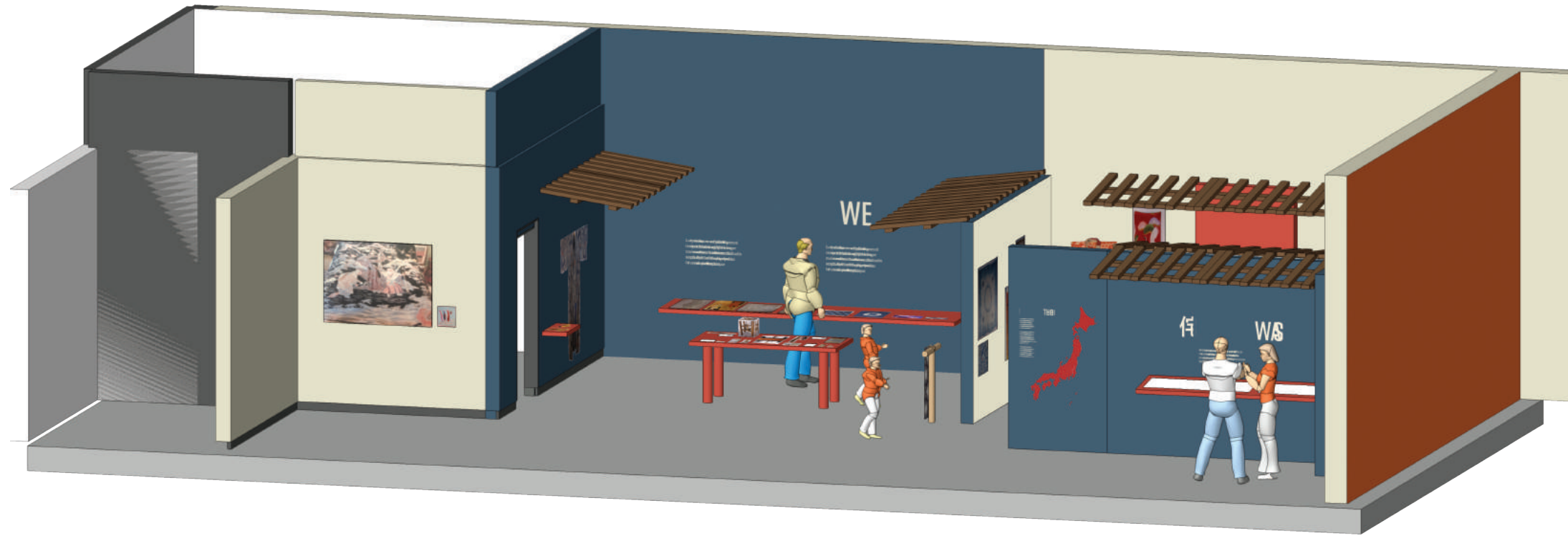
This look is achieved through the use of flood lighting, rather than spot. The dark walls of the show will also help to control the amount of light exposure by absorbing most excess light.

Wireframe



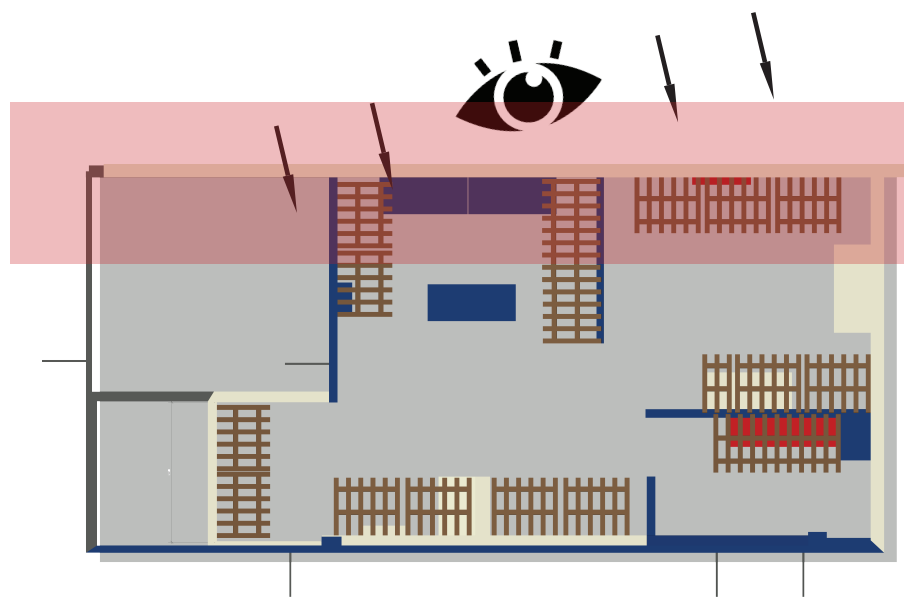
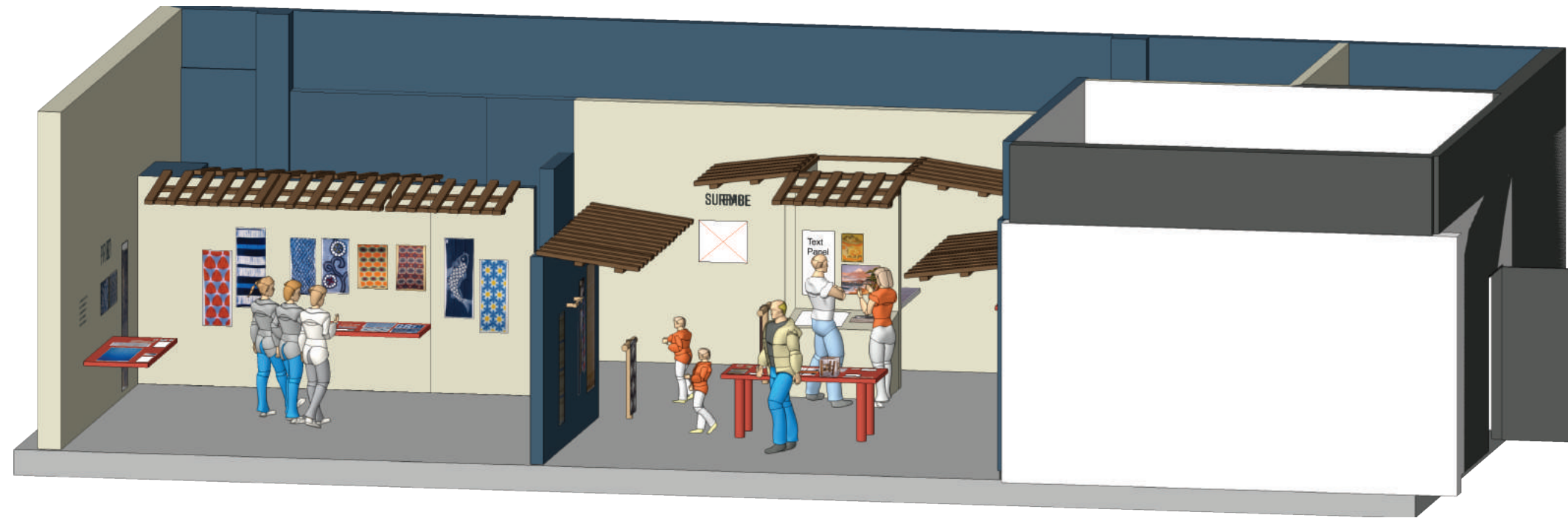
Rendering





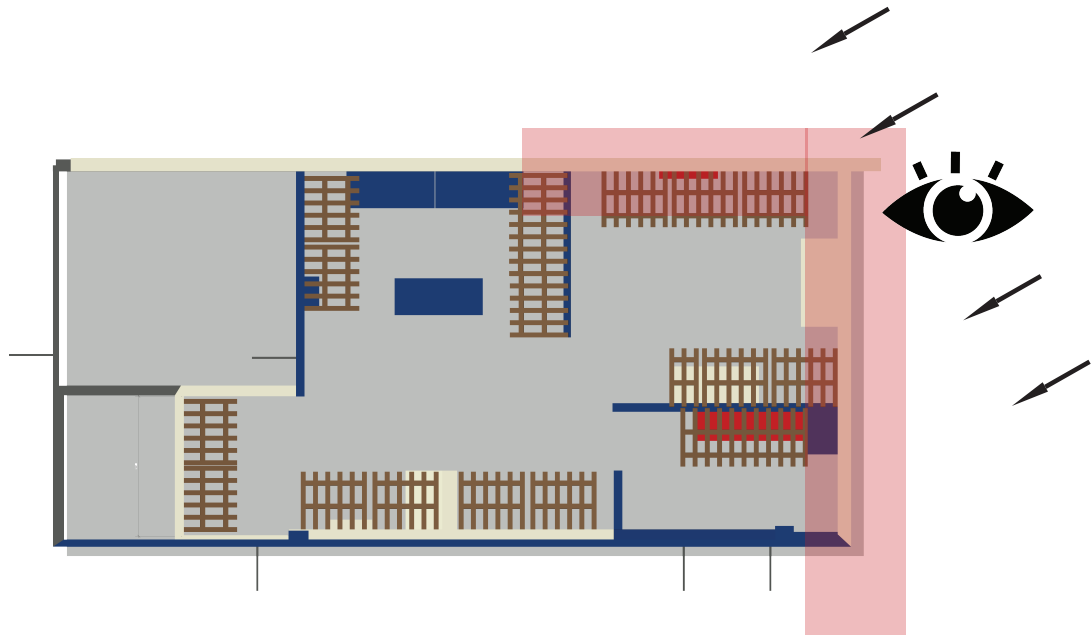
Viewing Guide

The portion highlighted in red has been removed. The location of the eye and direction of the arrows shows you which direction you are looking into the exhibition space.



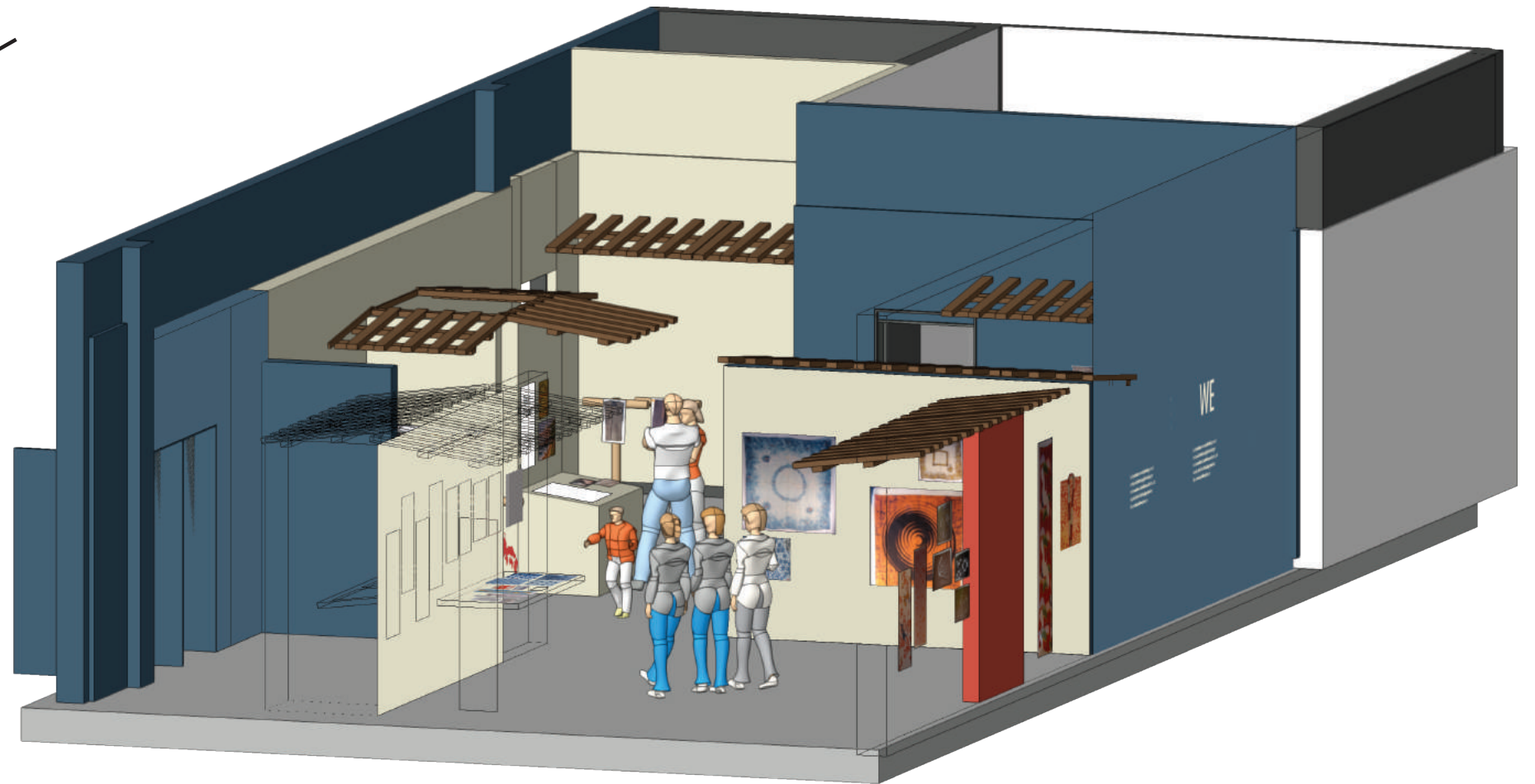
Viewing Guide

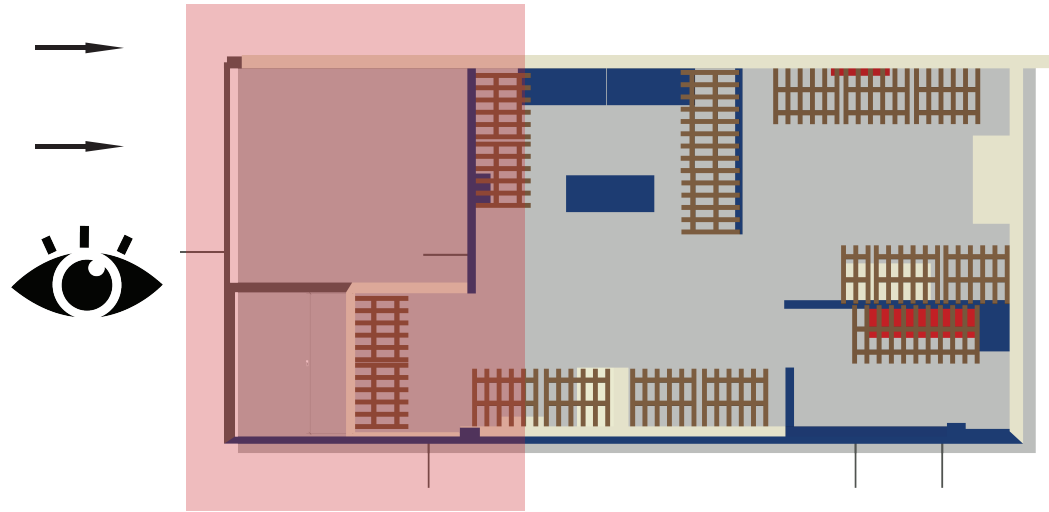
The portion highlighted in red has been removed. The location of the eye and direction of the arrows shows you which direction you are looking into the exhibition space.



Viewing Guide

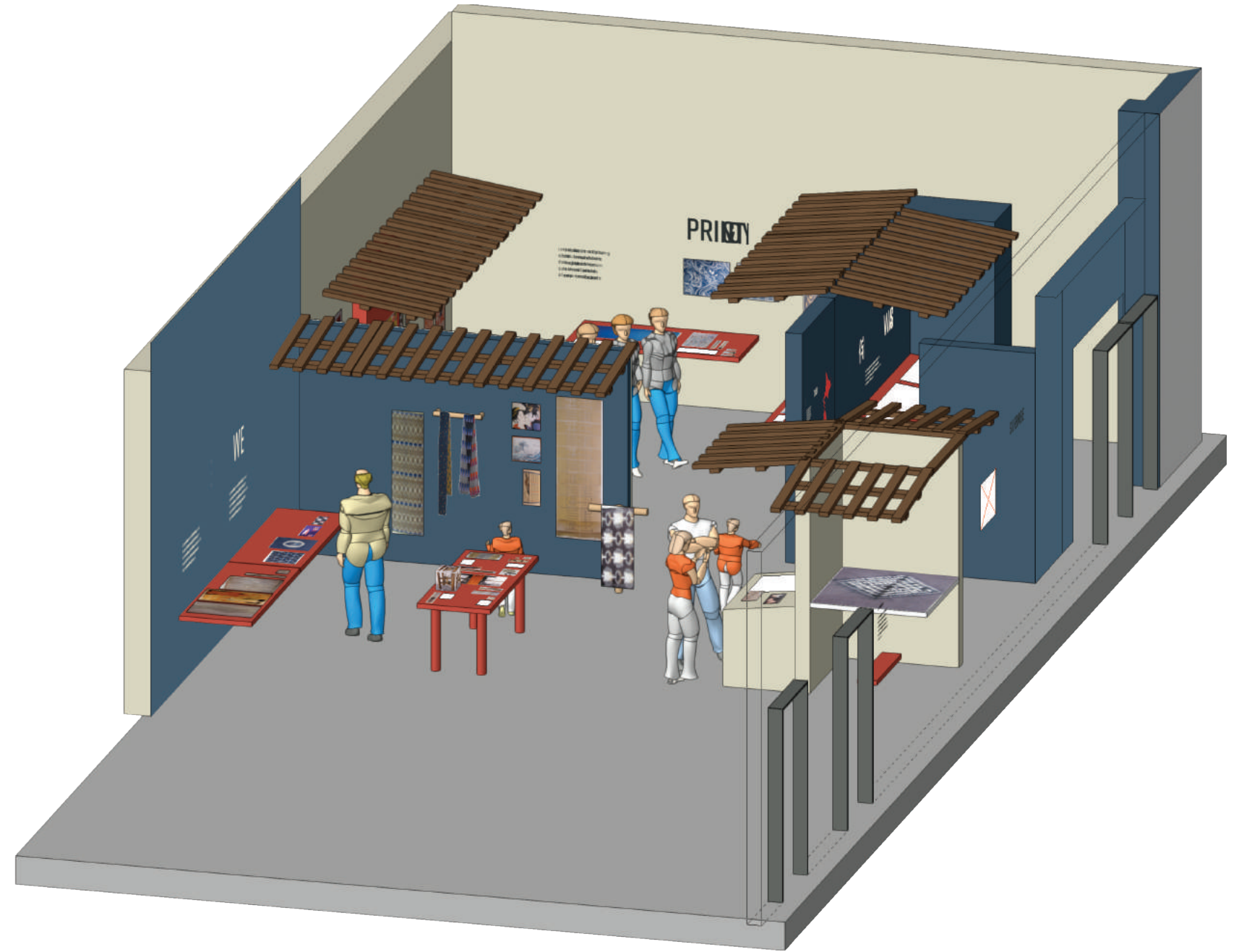
The portion highlighted in red has been removed. The location of the eye and direction of the arrows indicate which direction you are looking into the exhibition space. This view has walls and portions of the exhibit "ghosted" so you can see through them into the surrounding structure.

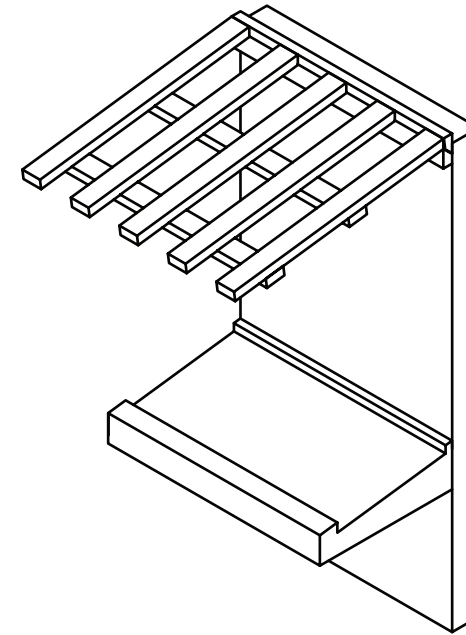
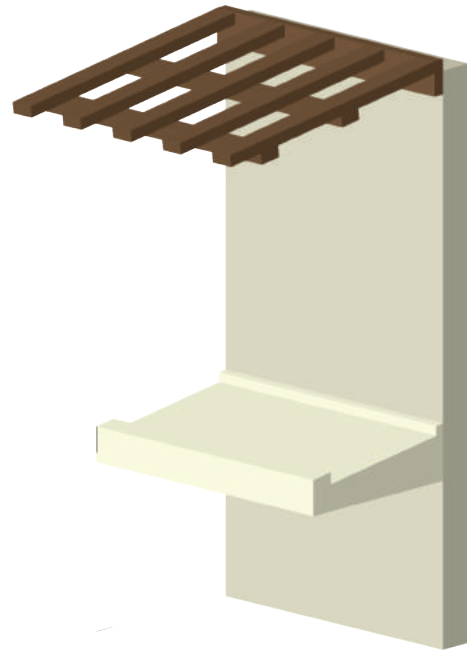




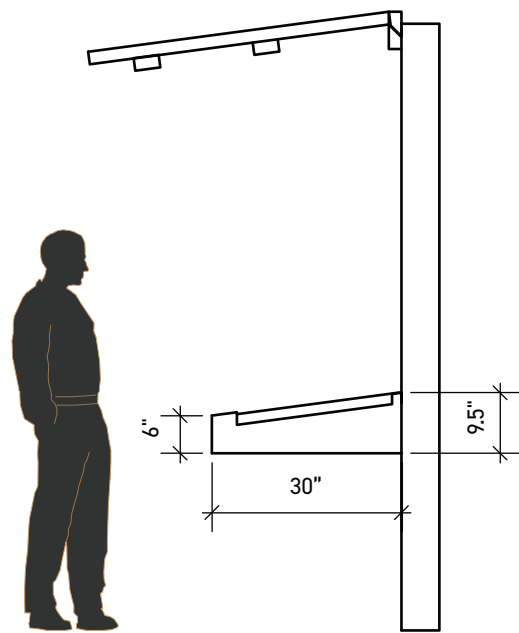
Viewing Guide

The portion highlighted in red has been removed. The location of the eye and direction of the arrows indicate which direction you are looking into the exhibition space. This view has walls and portions of the exhibit "ghosted" so you can see through them into the surrounding structure.

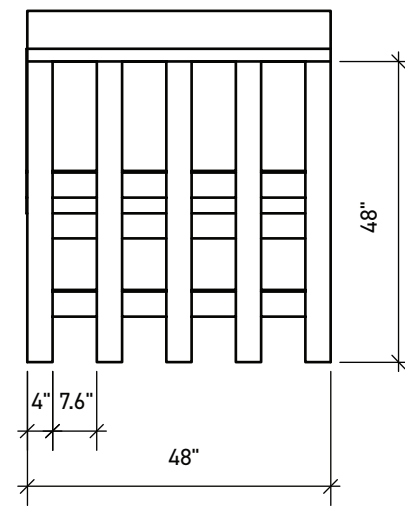




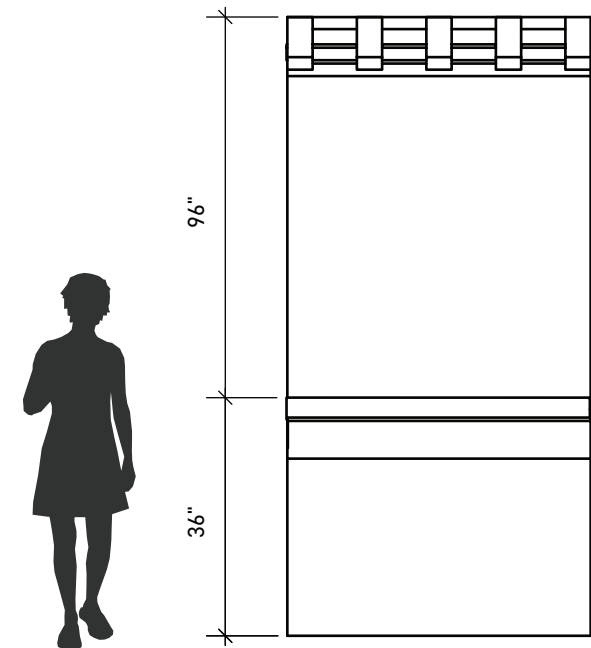
Left-ISO



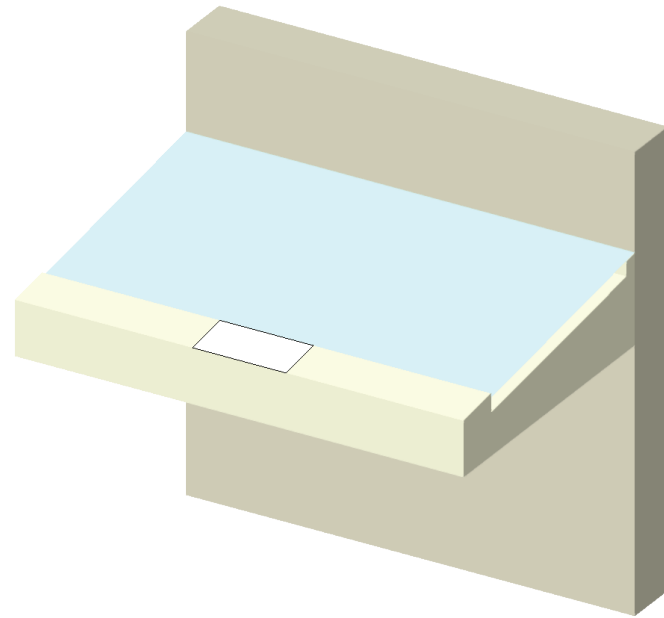
RIGHT



TOP



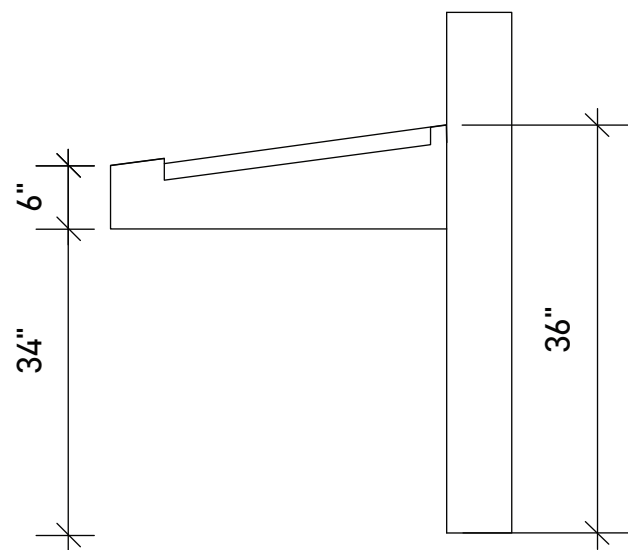
FRONT



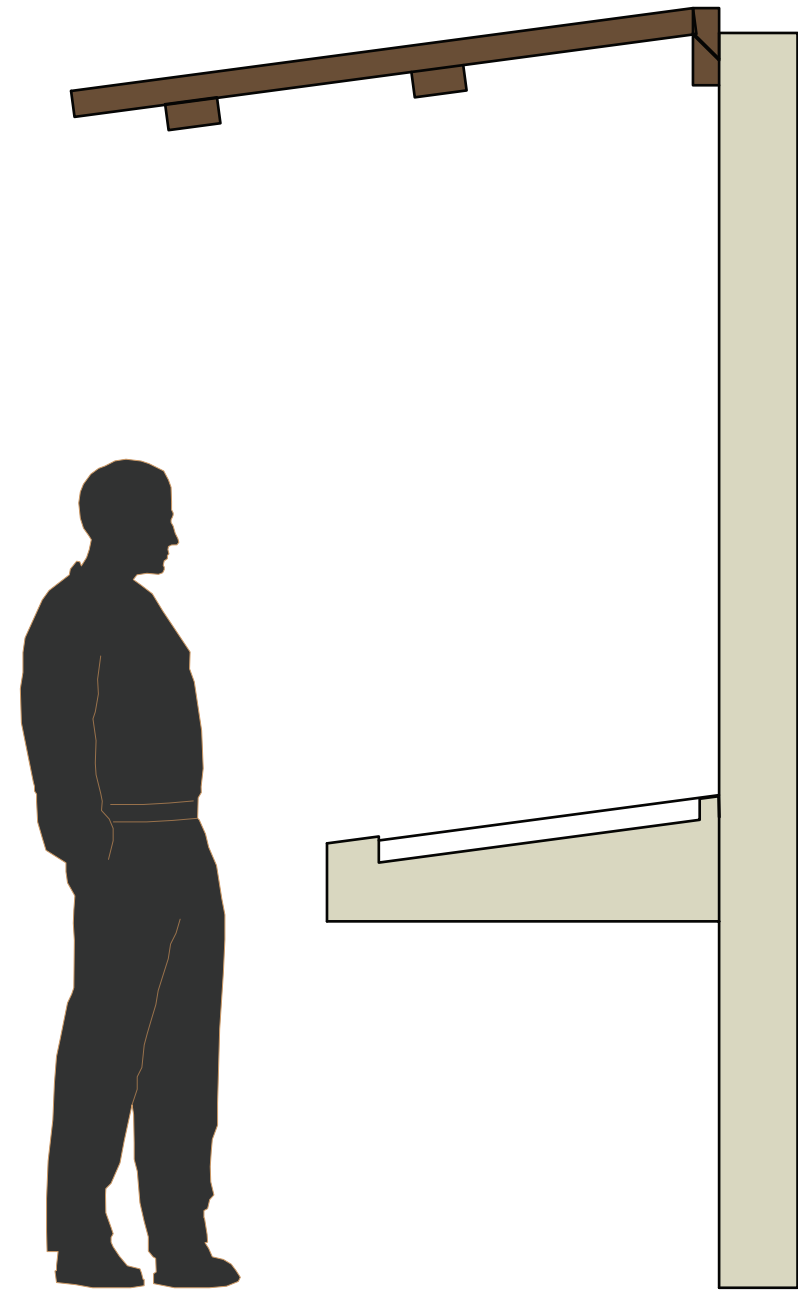
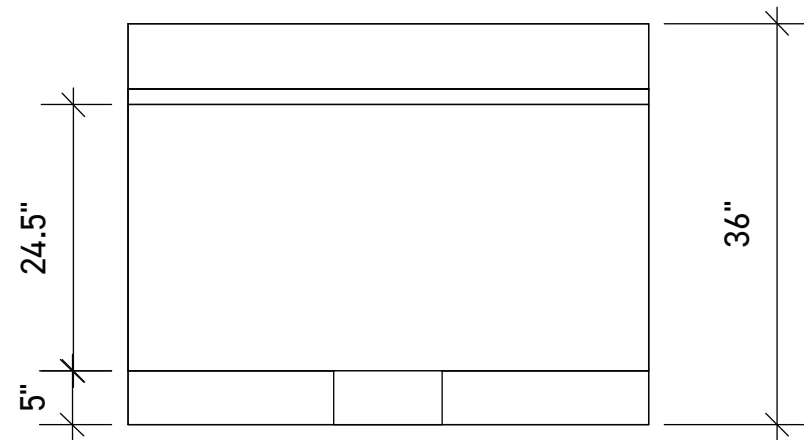
Detail of Shelving

This platform is built at a slight angle to take stress off of the objects under glass.
Object tags can be displayed in the case or on the small platform edge closest to the viewer.

RIGHT



TOP

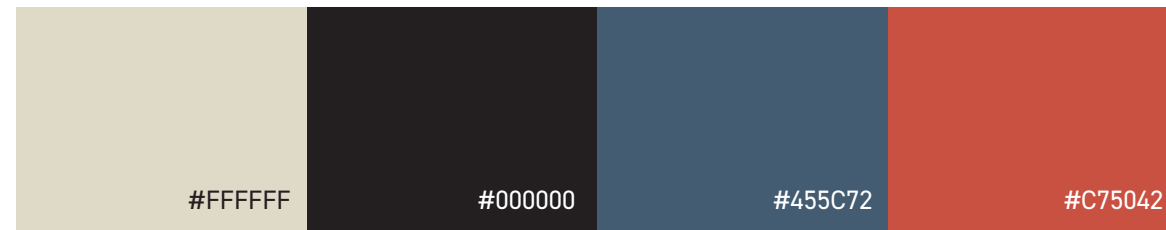


Phase Four

Visual Language & Identity

Color Palette

White and Black will be used primarily for text.
The blue and red are key colors for the entire exhibition.
They will be used as narrative building colors and to emphasize key object/words.



Promotional Imagery

We will be relying on the imagery of traditional
Japanese Indigo dyes and the name/typography of the
show to carry promotional imagery.

Indigo Dyed Fabric



Typography

WABI SABI
侘寂

Typography

蘭亭黑-繁
Lántíng hēi-fán

This type face will be used
for any and all Japanese
words.

0 1 2 3 4 5 6 7 8 9

あいうえお
かきくけこ
さしすせそ
たちつてと
なにぬねの
はひふへほ
まみむめも
や ゆ よ
らりるれろ
わ を ん

Rift
Demi

Rift will serve as the
typeface for the title and
all section headers.

0 1 2 3 4 5 6 7 8 9
A B C D E F G H I J
K L M N O P Q R S
T U V W X Y Z

Minion
Regular

Minion will be used
for all body text.

0 1 2 3 4 5 6 7 8 9
A B C D E F G H I J
K L M N O P Q R S
T U V Q X Y Z
a b c d e f g h i j k l m
n o p q r s t u v w x y z

Wabi Sabi

Phase 4: Visual Language & Identity
Intro Wall

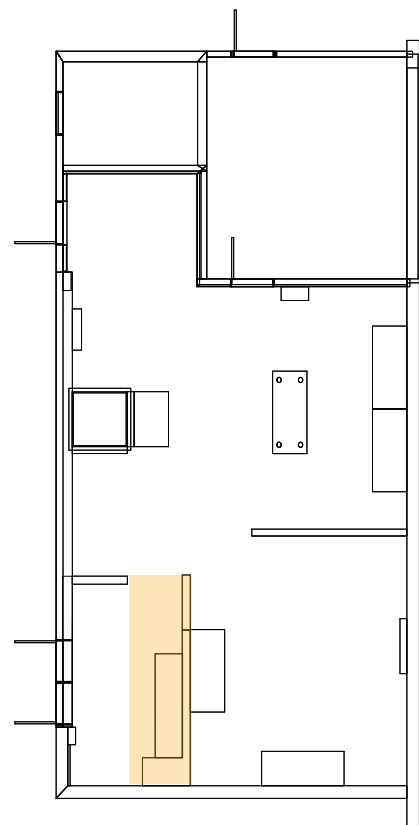
Bronte Blanco + Alecia Decker
UC Davis Design Museum

Title Wall
Indigo dyed fabric, wrapped
around wall.

Title
Type; Rift — Demi;
Dimensional acrylic letters

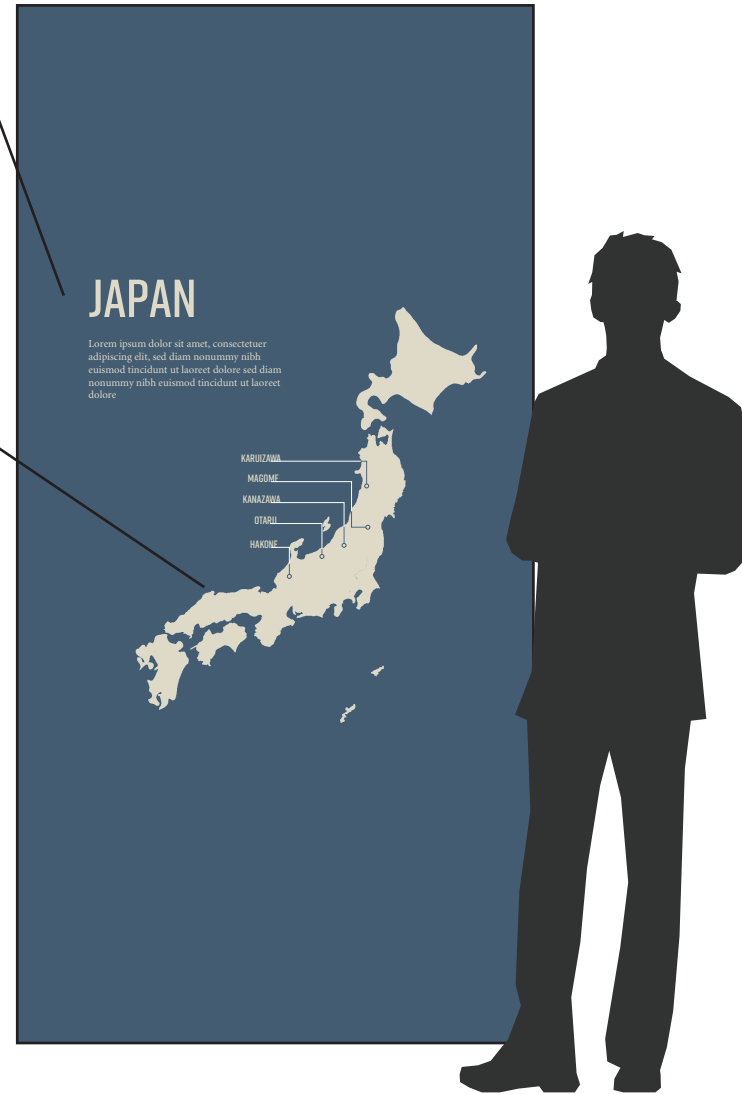
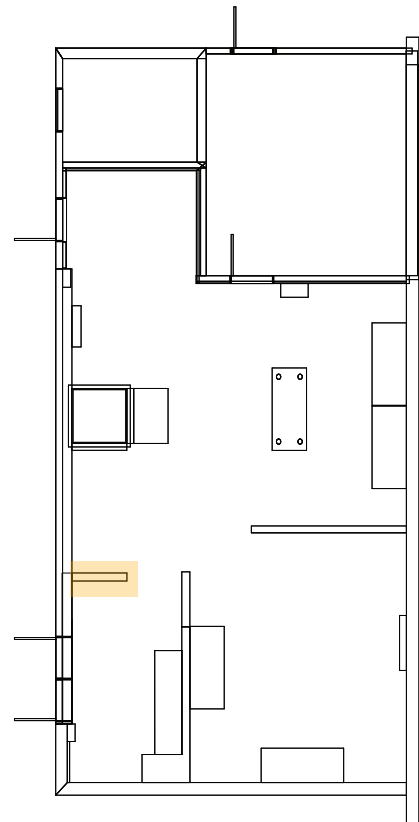
Intro Text
Header Type; Rift — Demi;
Body Type: Minion — Regular

Title Description
Type: Minion — Regular; Vinyl
Definition of Wabi Sabi.



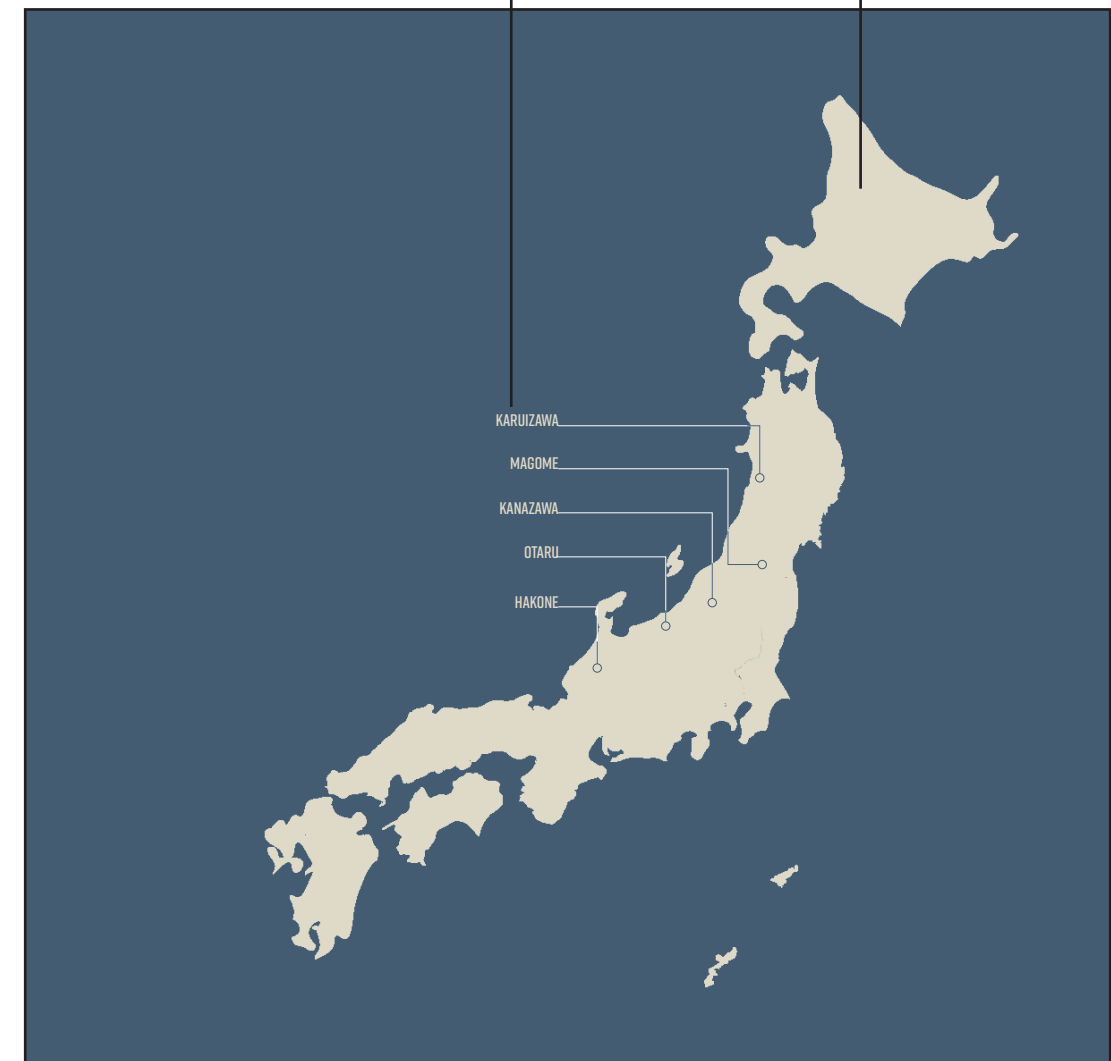
Map Wall
This wall introduces the visitor to the many locations objects were acquired.

Map
White Vinyl



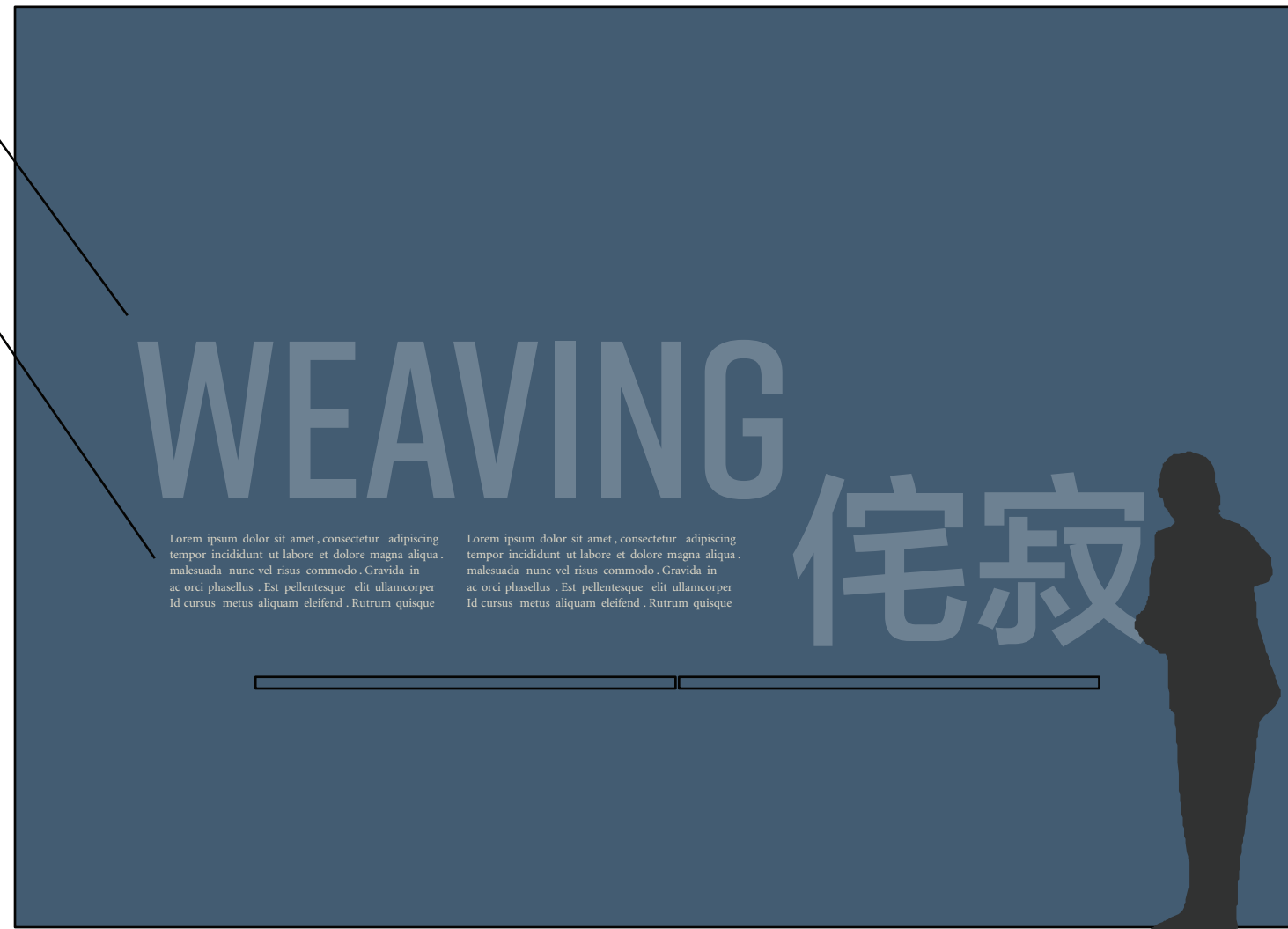
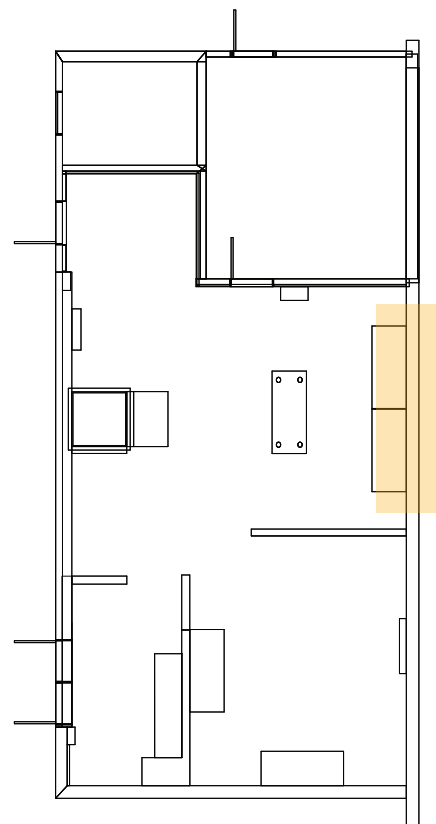
Name of Location

Vinyl Map Graphic



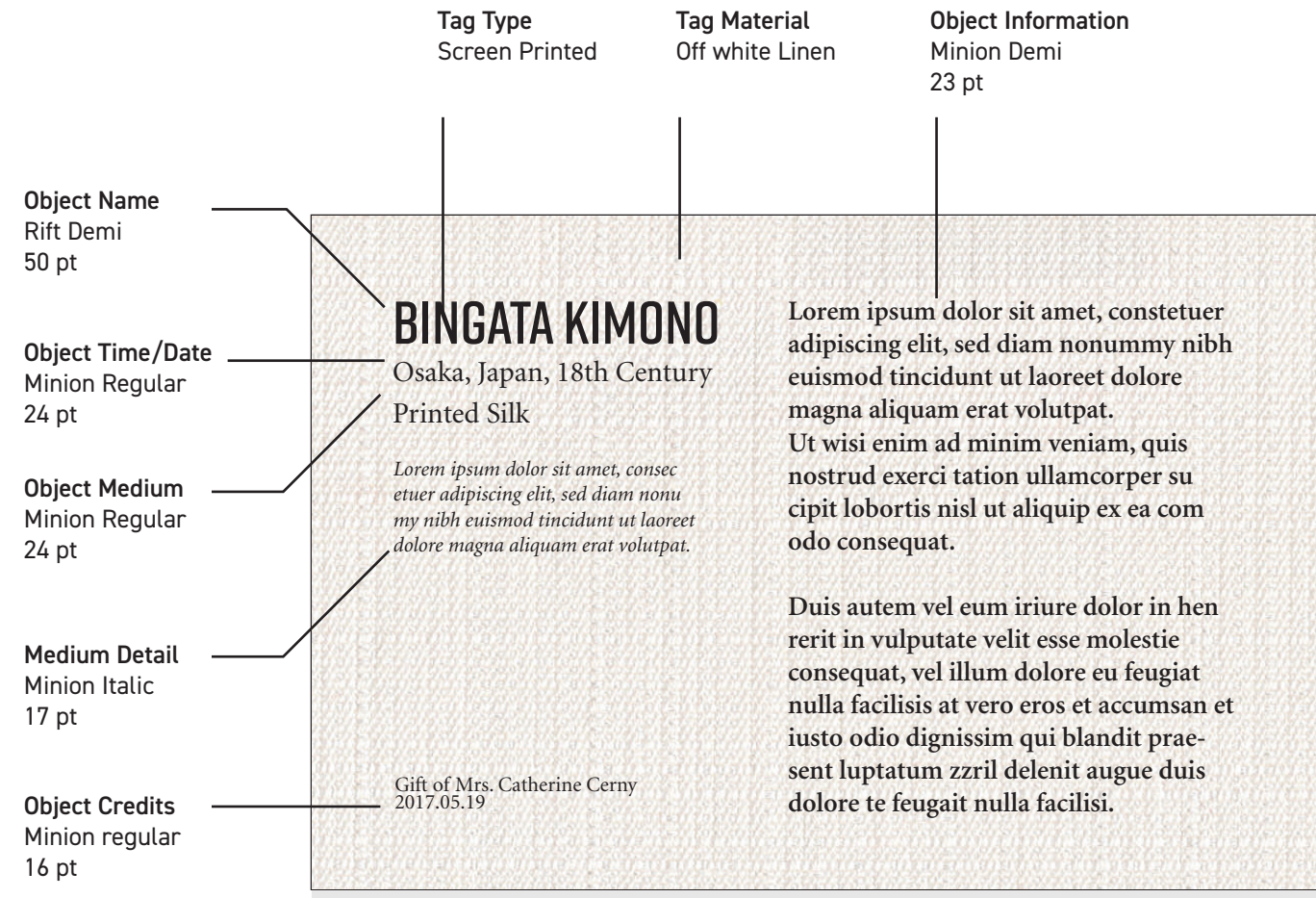
Section Header
Gloss paint, a few shades lighter than wall

Section Body Text
Minion Regular;
White Vinyl



Sections

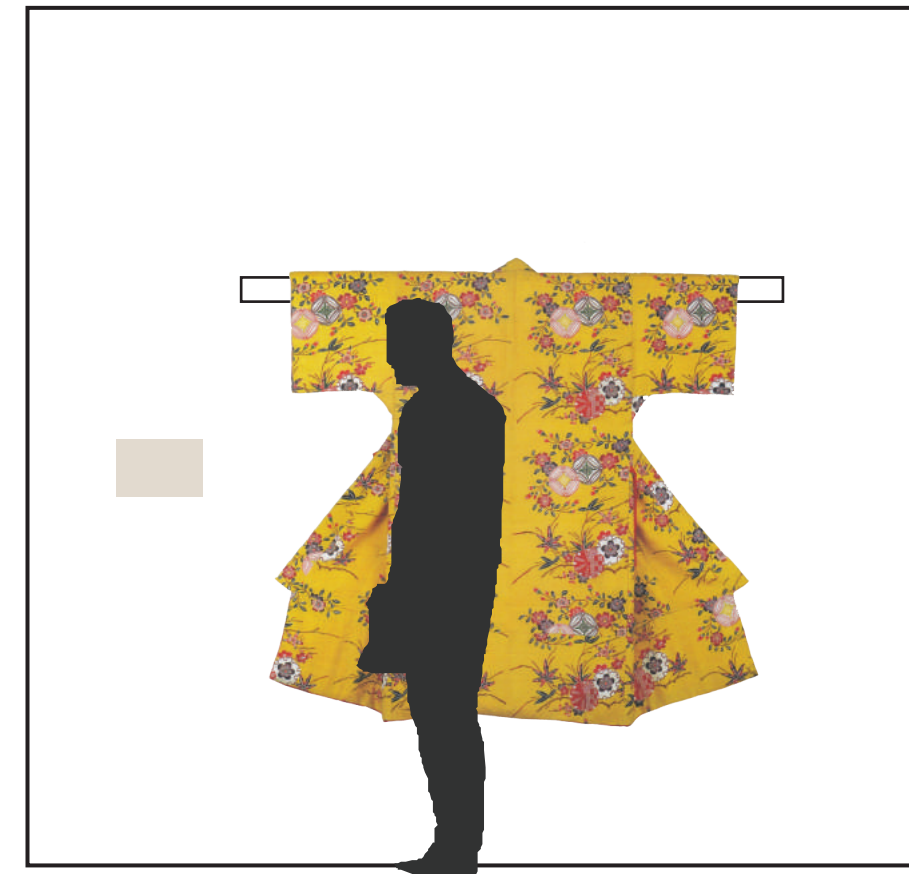
Section headings strive to stand out amongst a dizzying amount of objects. They are very large for this reason. They are faint in color to avoid being overwhelming.



Object Labels

5" x 8" Label

Labels will go directly onto walls beside objects, as well as under glass or on shelving. We hope to have tags made out of linen, screen printed with text.

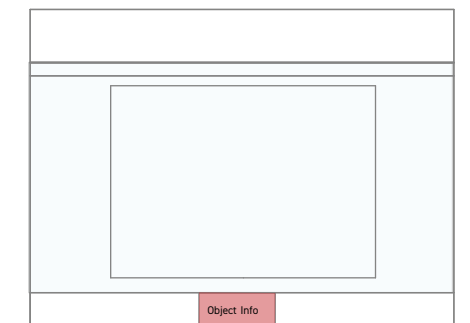
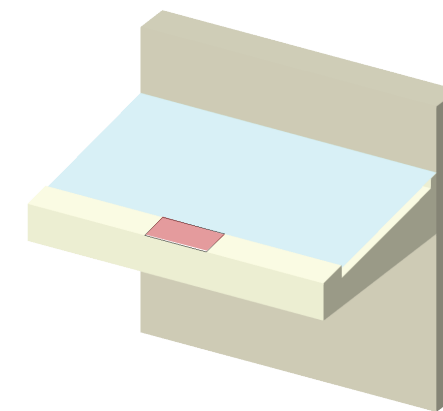


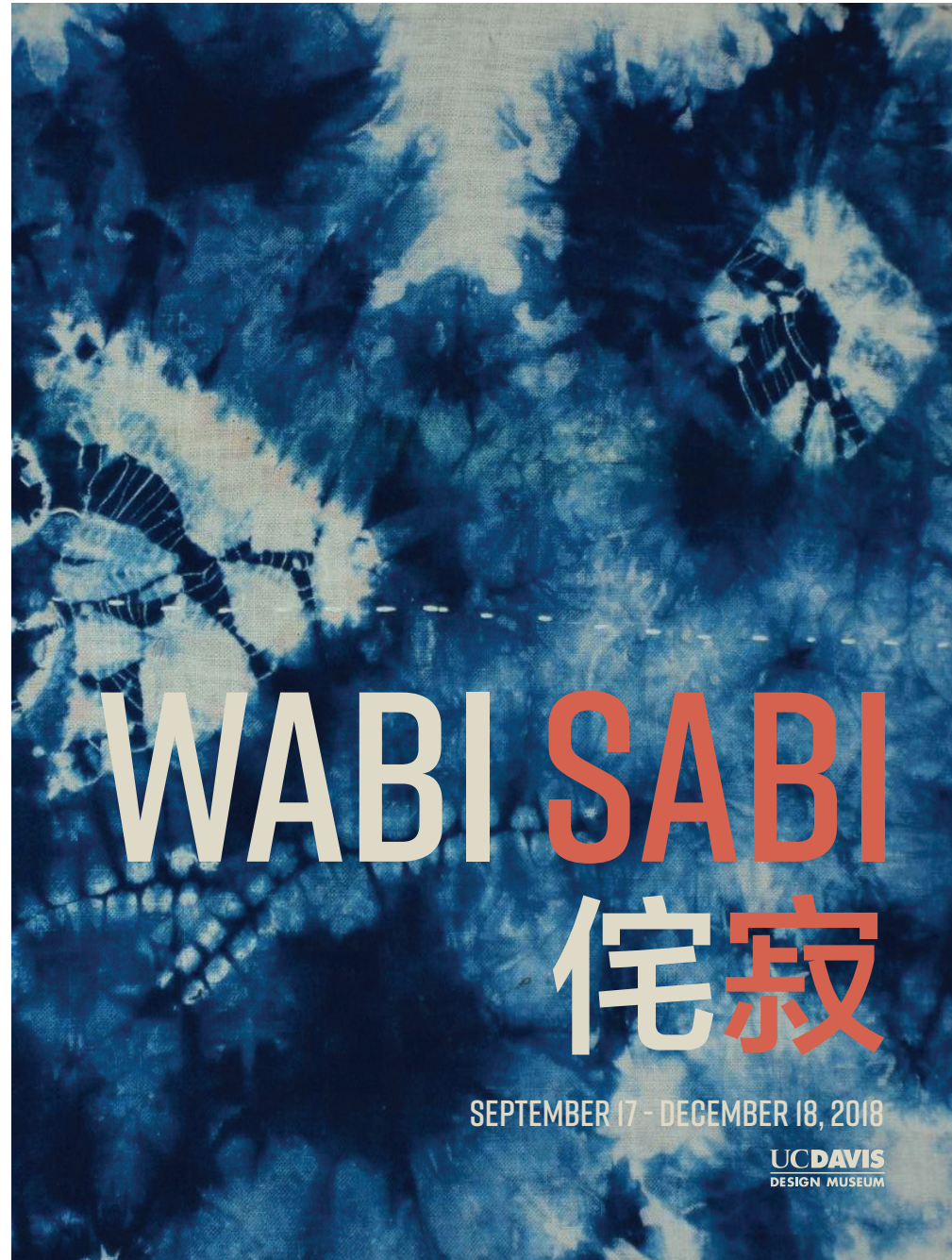
	Tag Type Screen Printed	Tag Material Off white Linen	Object Information Minion Demi 13 pt
<p>Object Name Rift Demi 31 pt</p> <p>Object Time/Date Minion Regular 15 pt</p> <p>Object Medium Minion Regular 15 pt</p> <p>Medium Detail Minion Italic 11 pt</p> <p>Object Credits Minion regular 10 pt</p>	<p style="text-align: center;">BINGATA KIMONO</p> <p>Osaka, Japan, 18th Century Printed Silk</p> <p><i> Lorem ipsum dolor sit amet, consetetur etur adipiscing elit, sed diam nonu my nibh euismod tincidunt ut laoreet dolore magna aliquam erat volutpat.</i></p> <p>Gift of Mrs. Catherine Cerny 2017.05.19</p>		
		<p> Lorem ipsum dolor sit amet, consetetur adipiscing elit, sed diam nonmy nibh euismod tincidunt ut laoreet dolore magna aliquam erat volutpat. Ut wisi enim ad minim veniam, quis nostrud exerci tation ullamcorper su cipit lobortis nisl ut aliquip ex ea com odo consequat.</p> <p>Duis autem vel eum iriure dolor in hen rerit in vulputate velit esse molestie consequat, vel illum dolore eu feugiat nulla facilisis at vero eros et accumsan et iusto odio dignissim qui blandit praesent luptatum zzril delenit augue dui dolore te feugait nulla facilisi. Lorem ipsum dolor sit amet, cons</p>	<p> Lorem ipsum dolor sit amet, consetetur adipiscing elit, sed diam nonmy nibh euismod tincidunt ut laoreet dolore magna aliquam erat volutpat. Ut wisi enim ad minim veniam, quis nostrud exerci tation ullamcorper su cipit lobortis nisl ut aliquip ex ea com odo consequat.</p> <p>Duis autem vel eum iriure dolor in hen rerit in vulputate velit esse molestie consequat, vel illum dolore eu feugiat nulla facilisis at vero eros et accumsan et iusto odio dignissim qui blandit praesent luptatum zzril delenit augue dui dolore te feugait nulla facilisi. Lorem ipsum dolor sit amet, cons</p>

Object Labels

5" x 10" Label

These labels are specifically designed for the display cases. They will be placed on a 5" recess in display cases and are longer than the other labels for this reason.





Show Poster

The poster for the show uses the red to highlight the relation between the english and Japanese text.

The smaller posters below are color variations.

Medium: 48" x 36" Matte Paper

